

TEST REPORT

The following tested product(s) were submitted and identified by the vendor as:

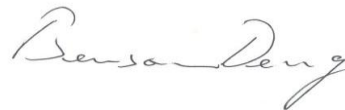
Applicant : HK Lighting Group Inc.
Address of Applicant : 3529 Old Conejo Road, #118 Newbury Park, CA 91320
Testing Laboratory : SGS Taiwan Ltd., Optics Laboratory
Laboratory Address : No. 33, Wu Chyuan Road, New Taipei Industrial Park, Wu Ku District, New Taipei City 24886, Taiwan (R.O.C.)
Product Name : Area Accent Light
Model / Serial Number : ZXL20-XT3030/1050-M
Manufacturer : HK Lighting Group Inc.
Test Standard/Method : IES LM-79-08 Approved Method: Electrical and Photometric Measurements of Solid-State Lighting Products
Rating : AC (120 to 277) V 60 Hz, 34 W
Tested Condition : AC 120 V 60 Hz
Date of Issue : May 08, 2017

- ◆ The test results are solely accountable for the testing samples.
- ◆ All reported contents shall not be used for advertising, publication, marketing strategies and legal proceedings.
- ◆ Excerpts taken from the report will not be valid unless otherwise stated in the laboratory agreement.

Note: The report must not be used to claim product certification, approval, or endorsement by NVLAP, NIST, or any agency of the Federal Government.

Test Results : -PLEASE SEE ATTACHED SHEETS-

Signed for and on behalf of
SGS TAIWAN Ltd.



Benson DENG
Supervisor

Unless otherwise stated the results shown in this test report refer only to the sample(s) tested. This test report cannot be reproduced, except in full, without prior written permission of the Company. 除非另有說明，此報告結果僅對測試之樣品負責。本報告未經本公司書面許可，不可部份複製。

This document is issued by the Company subject to its General Conditions of Service printed overleaf, available on request or accessible at www.sgs.com/terms_and_conditions.htm and, for electronic format documents, subject to Terms and Conditions for Electronic Documents at www.sgs.com/en/Terms-and-Conditions/Terms-e-Document. Attention is drawn to the limitation of liability, indemnification and jurisdiction issues defined therein. Any holder of this document is advised that information contained hereon reflects the Company's findings at the time of its intervention only and within the limits of Client's instructions, if any. The Company's sole responsibility is to its Client and this document does not exonerate parties to a transaction from exercising all their rights and obligations under the transaction documents. This document cannot be reproduced except in full, without prior written approval of the Company. Any unauthorized alteration, forgery or falsification of the content or appearance of this document is unlawful and offenders may be prosecuted to the fullest extent of the law.

1 SAMPLING PROCEDURES

From manufacturers.

2 DATE OF RECEIPT OF SAMPLES

May 03, 2017

3 DATE(S) OF PERFORMANCE OF THE TEST

May 03, 2017 ~ May 08, 2017

4 IDENTITY OF SAMPLES

Quantity	Model	Serial Number
1	ZXL20-XT3030/1050-M	# 1

5 TEST ITEMS

5.1 Luminous Efficacy (η)

The test results of luminous efficacy were implemented referring to Clause 11.0 Luminous Efficacy of IES LM-79-08 Approved Method: Electrical and Photometric Measurements of Solid-State Lighting Products.

5.2 Total Luminous Flux (ψ_v)

The test results of total luminous flux were implemented referring to Clause 9.3 Goniophotometer of Clause 9.0 Test Methods for Total Luminous Flux measurement of IES LM-79-08.

5.3 Correlated Color Temperature (CCT) & Duv

The test results of Correlated Color Temperature were implemented referring to ANSI C78.377-2011, Clause 12.1 Method using a sphere-spectroradiometer system of 12.0 TEST METHODS FOR COLOR CHARACTERISTICS OF SSL PRODUCTS of IES LM-79-08, and CIE 15:2004 COLORIMETRY.

5.4 CIE Color Coordinate (CIEx, CIEy)

The test results were implemented referring to ANSI C78.377-2011 Specifications for the Chromaticity of Solid State Lighting Products, Clause 12.0 Test Methods for Color Characteristics of SSL Products of IES LM-79-08, and CIE 15:2004 COLORIMETRY.

Unless otherwise stated the results shown in this test report refer only to the sample(s) tested. This test report cannot be reproduced, except in full, without prior written permission of the Company. 除非另有說明，此報告結果僅對測試之樣品負責。本報告未經本公司書面許可，不可部份複製。

This document is issued by the Company subject to its General Conditions of Service printed overleaf, available on request or accessible at www.sgs.com/terms_and_conditions.htm and, for electronic format documents, subject to Terms and Conditions for Electronic Documents at www.sgs.com/en/Terms-and-Conditions/Terms-e-Document. Attention is drawn to the limitation of liability, indemnification and jurisdiction issues defined therein. Any holder of this document is advised that information contained hereon reflects the Company's findings at the time of its intervention only and within the limits of Client's instructions, if any. The Company's sole responsibility is to its Client and this document does not exonerate parties to a transaction from exercising all their rights and obligations under the transaction documents. This document cannot be reproduced except in full, without prior written approval of the Company. Any unauthorized alteration, forgery or falsification of the content or appearance of this document is unlawful and offenders may be prosecuted to the fullest extent of the law.

5.5 Color Rendering Index (Ra)

The test results of Color Rendering Index were implemented referring to ANSI C78.377-2011, CIE 13.3-1995 METHOD OF MEASUREMENT AND SPECIFYING COLOUR RENDERING PROPERTIES OF LIGHT SOURCES, and Clause 12.2 of 12.0 of IES LM-79-08.

5.6 Electrical Quantities

The test results were implemented referring to ANSI C82.2-2002 METHOD OF MEASUREMENT OF FLUORESCENT LAMP BALLASTS, ANSI C82.77 HARMONIC EMISSION LIMITS – RELATED POWER QUALITY REQUIREMENTS FOR LIGHTING EQUIPMENT, and IES LM-79-08.

5.7 Luminous Intensity Distribution

The test results of luminous intensity distribution were implemented referring to Clause 10.0 Luminous Intensity Distribution of IES LM-79-08.

5.7.1 Beam Angle & Field Angle

5.7.2 Center Beam Intensity

5.7.3 Polar Luminous Intensity Distribution

5.7.4 Cartesian Coordinates Luminous Intensity Distribution

5.7.5 Zonal Lumen Density

Unless otherwise stated the results shown in this test report refer only to the sample(s) tested. This test report cannot be reproduced, except in full, without prior written permission of the Company. 除非另有說明，此報告結果僅對測試之樣品負責。本報告未經本公司書面許可，不可部份複製。

This document is issued by the Company subject to its General Conditions of Service printed overleaf, available on request or accessible at www.sgs.com/terms_and_conditions.htm and, for electronic format documents, subject to Terms and Conditions for Electronic Documents at www.sgs.com/en/Terms-and-Conditions/Terms-e-Documents. Attention is drawn to the limitation of liability, indemnification and jurisdiction issues defined therein. Any holder of this document is advised that information contained hereon reflects the Company's findings at the time of its intervention only and within the limits of Client's instructions, if any. The Company's sole responsibility is to its Client and this document does not exonerate parties to a transaction from exercising all their rights and obligations under the transaction documents. This document cannot be reproduced except in full, without prior written approval of the Company. Any unauthorized alteration, forgery or falsification of the content or appearance of this document is unlawful and offenders may be prosecuted to the fullest extent of the law.

6 TEST CONDITIONS

Main Test Equipment:

Name	Brand	Model	S/N	Calibration Due Date
Digital Power Meter / AC Source	YOKOGAWA / apc	WT-310 / AFC-500W	C2PK22023V / F312120079	2017/8/18
Goniophotometer System	SGS Define (CZIBULA & GRUNDMANN GMBH / everfine)	GO-R5000-GS-PLUS	1001001	2017/7/30
Digital Power Analyzer / AC Source	YOKOGAWA / apc	WT-1800 / AFC-500W	91L826815 / F312080105	2017/10/27
Spectroradiometer / Integrating Sphere	OTSUKA / Labsphere	MCPD-9800 / LMS 760	98010303 / 0326099353	2017/7/8

Environmental Conditions:

Ambient temperature: (25 ± 1) °C
Relative humidity: (60 ± 20) %RH
Dark room: < 0.05 lx

DUT Conditions:

Power input: AC 120 V 60 Hz
Dimension: L 290 mm x W 120 mm x H 110 mm
Stabilization time: > 60 minutes
Control Gear: DUT Built-in
Prior operation: 0 h

Measurement Conditions:

Goniophotometer: 2.115 m (N.F.)

Unless otherwise stated the results shown in this test report refer only to the sample(s) tested. This test report cannot be reproduced, except in full, without prior written permission of the Company. 除非另有說明，此報告結果僅對測試之樣品負責。本報告未經本公司書面許可，不可部份複製。

This document is issued by the Company subject to its General Conditions of Service printed overleaf, available on request or accessible at www.sgs.com/terms_and_conditions.htm and, for electronic format documents, subject to Terms and Conditions for Electronic Documents at www.sgs.com/en/Terms-and-Conditions/Terms-e-Documents. Attention is drawn to the limitation of liability, indemnification and jurisdiction issues defined therein. Any holder of this document is advised that information contained hereon reflects the Company's findings at the time of its intervention only and within the limits of Client's instructions, if any. The Company's sole responsibility is to its Client and this document does not exonerate parties to a transaction from exercising all their rights and obligations under the transaction documents. This document cannot be reproduced except in full, without prior written approval of the Company. Any unauthorized alteration, forgery or falsification of the content or appearance of this document is unlawful and offenders may be prosecuted to the fullest extent of the law.

7 TEST RESULTS

7.1 Luminous Efficacy (η)

S/N	Luminous Efficacy (η)	Note
# 1	50.8 lm/W	Stabilization

7.2 Total Luminous Flux (ψ_v)

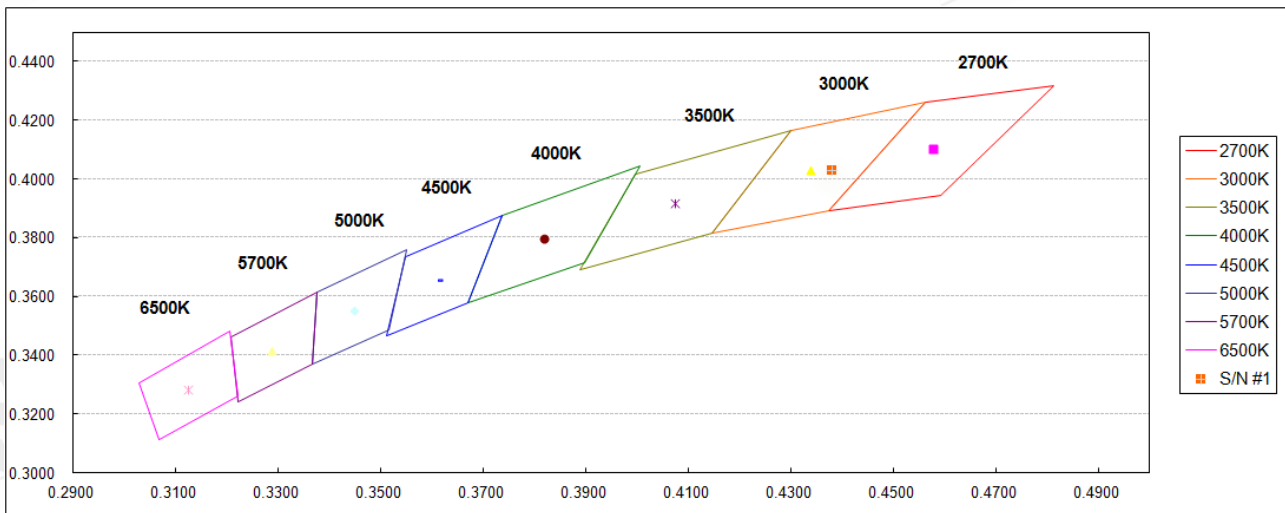
S/N	Total Luminous Flux	Note
# 1	1753.9 lm	Stabilization

7.3 Correlated Color Temperature (CCT) & Duv

S/N	CCT	Duv	Note
# 1	2975 K	-0.0006	Stabilization

7.4 CIE Color Coordinate (CIEx, CIEy)

S/N	CIEx	CIEy	Note
# 1	0.4379	0.4030	Stabilization



ANSI C78.377 CIE(x,y) chromaticity diagram

Unless otherwise stated the results shown in this test report refer only to the sample(s) tested. This test report cannot be reproduced, except in full, without prior written permission of the Company. 除非另有說明，此報告結果僅對測試之樣品負責。本報告未經本公司書面許可，不可部份複製。

This document is issued by the Company subject to its General Conditions of Service printed overleaf, available on request or accessible at www.sgs.com/terms_and_conditions.htm and, for electronic format documents, subject to Terms and Conditions for Electronic Documents at www.sgs.com/en/Terms-and-Conditions/Terms-e-Documents. Attention is drawn to the limitation of liability, indemnification and jurisdiction issues defined therein. Any holder of this document is advised that information contained hereon reflects the Company's findings at the time of its intervention only and within the limits of Client's instructions, if any. The Company's sole responsibility is to its Client and this document does not exonerate parties to a transaction from exercising all their rights and obligations under the transaction documents. This document cannot be reproduced except in full, without prior written approval of the Company. Any unauthorized alteration, forgery or falsification of the content or appearance of this document is unlawful and offenders may be prosecuted to the fullest extent of the law.

7.5 Color Rendering Index (Ra)

S/N	CRI (Ra)	R ₉	Note
# 1	81.6	11.4	Stabilization

7.6 Electrical Quantities

S/N	Voltage	Current	Input Power	Power Factor	THD _i (%)	Note
# 1	120.01 Vac	0.2888 A	34.550 W	0.9969	7.649 %	Stabilization

7.7 Luminous Intensity Distribution

7.7.1 Beam Angle & Field Angle

S/N	Beam Angle		Field Angle		Note
	0°-180°	90°-270°	0°-180°	90°-270°	
# 1	33.1°	33.4°	53.3°	53.6°	Stabilization

7.7.2 Center Beam Intensity

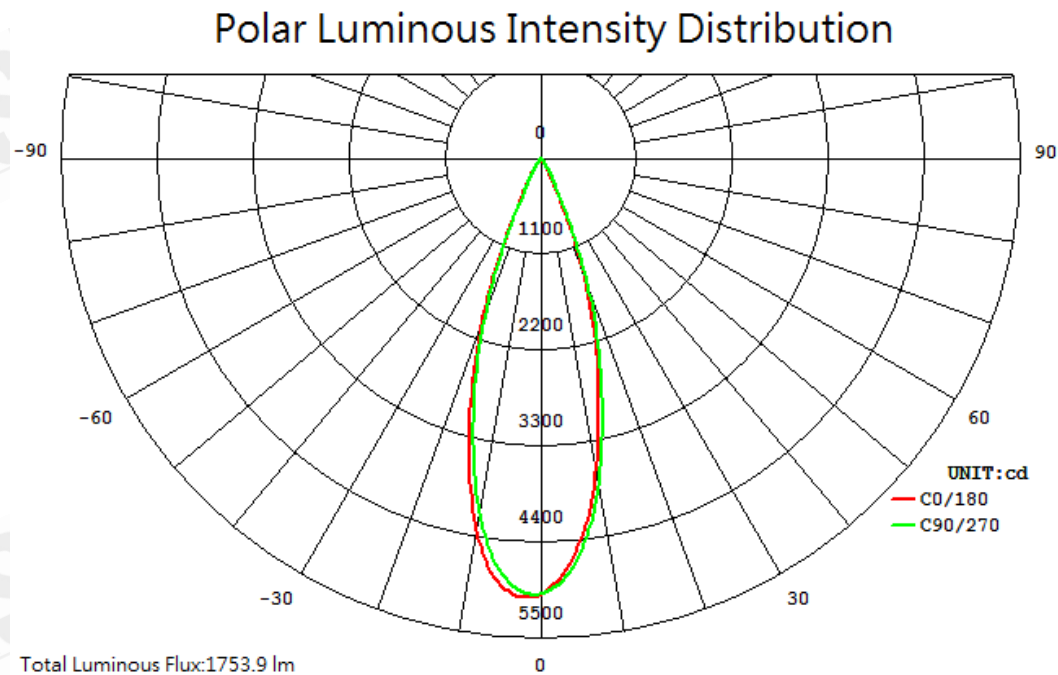
S/N	Center Beam Intensity		Maximum Intensity	Note
	0°-180°	90°-270°		
# 1	5035 cd	4998 cd	5039.65 cd	max. intensity @ (C=195°, Gamma=2.0°)

※ Photometric data please see Appendix A.

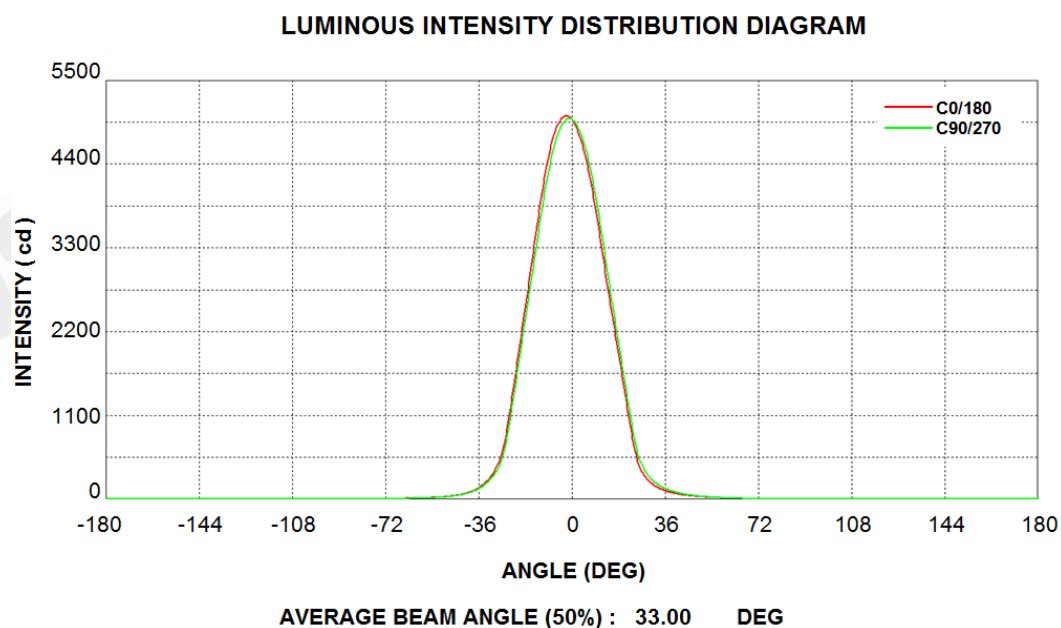
Unless otherwise stated the results shown in this test report refer only to the sample(s) tested. This test report cannot be reproduced, except in full, without prior written permission of the Company. 除非另有說明，此報告結果僅對測試之樣品負責。本報告未經本公司書面許可，不可部份複製。

This document is issued by the Company subject to its General Conditions of Service printed overleaf, available on request or accessible at www.sgs.com/terms_and_conditions.htm and, for electronic format documents, subject to Terms and Conditions for Electronic Documents at www.sgs.com/en/Terms-and-Conditions/Terms-e-Documents. Attention is drawn to the limitation of liability, indemnification and jurisdiction issues defined therein. Any holder of this document is advised that information contained hereon reflects the Company's findings at the time of its intervention only and within the limits of Client's instructions, if any. The Company's sole responsibility is to its Client and this document does not exonerate parties to a transaction from exercising all their rights and obligations under the transaction documents. This document cannot be reproduced except in full, without prior written approval of the Company. Any unauthorized alteration, forgery or falsification of the content or appearance of this document is unlawful and offenders may be prosecuted to the fullest extent of the law.

7.7.3 Polar Luminous Intensity Distribution



7.7.4 Cartesian Coordinates Luminous Intensity Distribution



Unless otherwise stated the results shown in this test report refer only to the sample(s) tested. This test report cannot be reproduced, except in full, without prior written permission of the Company. 除非另有說明，此報告結果僅對測試之樣品負責。本報告未經本公司書面許可，不可部份複製。

This document is issued by the Company subject to its General Conditions of Service printed overleaf, available on request or accessible at www.sgs.com/terms_and_conditions.htm and, for electronic format documents, subject to Terms and Conditions for Electronic Documents at www.sgs.com/en/Terms-and-Conditions/Terms-e-Document. Attention is drawn to the limitation of liability, indemnification and jurisdiction issues defined therein. Any holder of this document is advised that information contained hereon reflects the Company's findings at the time of its intervention only and within the limits of Client's instructions, if any. The Company's sole responsibility is to its Client and this document does not exonerate parties to a transaction from exercising all their rights and obligations under the transaction documents. This document cannot be reproduced except in full, without prior written approval of the Company. Any unauthorized alteration, forgery or falsification of the content or appearance of this document is unlawful and offenders may be prosecuted to the fullest extent of the law.

7.7.5 Zonal Lumen Density

Gamma	Zonal Flux (lm)	Cumulated Total Zonal Flux (lm)	Cumulated Luminous Flux Ratio (%)	Zonal Lumen Density Ratio (%)
0-10	427.794	427.794	24.39 %	99.26 %
10-20	780.793	1208.587	68.91 %	
20-30	372.534	1581.122	90.15 %	
30-40	101.339	1682.460	95.93 %	
40-50	39.406	1721.866	98.18 %	
50-60	18.894	1740.761	99.26 %	
60-70	9.951	1750.712	99.82 %	0.74 %
70-80	2.741	1753.453	99.98 %	
80-90	0.254	1753.707	99.99 %	
90-100	0.023	1753.731	100.00 %	0.00 %
100-110	0.017	1753.747	100.00 %	
110-120	0.020	1753.768	100.00 %	0.00 %
120-130	0.011	1753.779	100.00 %	
130-140	0.009	1753.788	100.00 %	
140-150	0.008	1753.796	100.00 %	
150-160	0.007	1753.802	100.00 %	
160-170	0.004	1753.806	100.00 %	
170-180	0.001	1753.807	100.00 %	

Zonal Lumen Density (0°-60°) : 99.26 %

Zonal Lumen Density (20°-50°) : 29.27 %

Zonal Lumen Density (60°-90°) : 0.74 %

Zonal Lumen Density (90°-120°) : 0.00 %

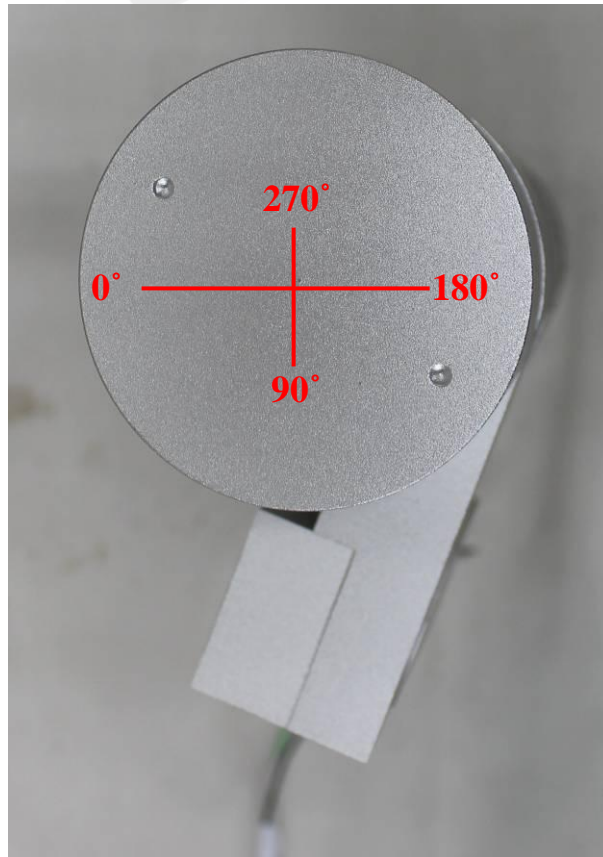
Zonal Lumen Density (120°-180°) : 0.00 %

※ Remark: Gamma 0° is the nadir (perpendicular to ground).

Unless otherwise stated the results shown in this test report refer only to the sample(s) tested. This test report cannot be reproduced, except in full, without prior written permission of the Company. 除非另有說明，此報告結果僅對測試之樣品負責。本報告未經本公司書面許可，不可部份複製。

This document is issued by the Company subject to its General Conditions of Service printed overleaf, available on request or accessible at www.sgs.com/terms_and_conditions.htm and, for electronic format documents, subject to Terms and Conditions for Electronic Documents at www.sgs.com/en/Terms-and-Conditions/Terms-e-Documents. Attention is drawn to the limitation of liability, indemnification and jurisdiction issues defined therein. Any holder of this document is advised that information contained hereon reflects the Company's findings at the time of its intervention only and within the limits of Client's instructions, if any. The Company's sole responsibility is to its Client and this document does not exonerate parties to a transaction from exercising all their rights and obligations under the transaction documents. This document cannot be reproduced except in full, without prior written approval of the Company. Any unauthorized alteration, forgery or falsification of the content or appearance of this document is unlawful and offenders may be prosecuted to the fullest extent of the law.

8 ANGLE DEFINITION

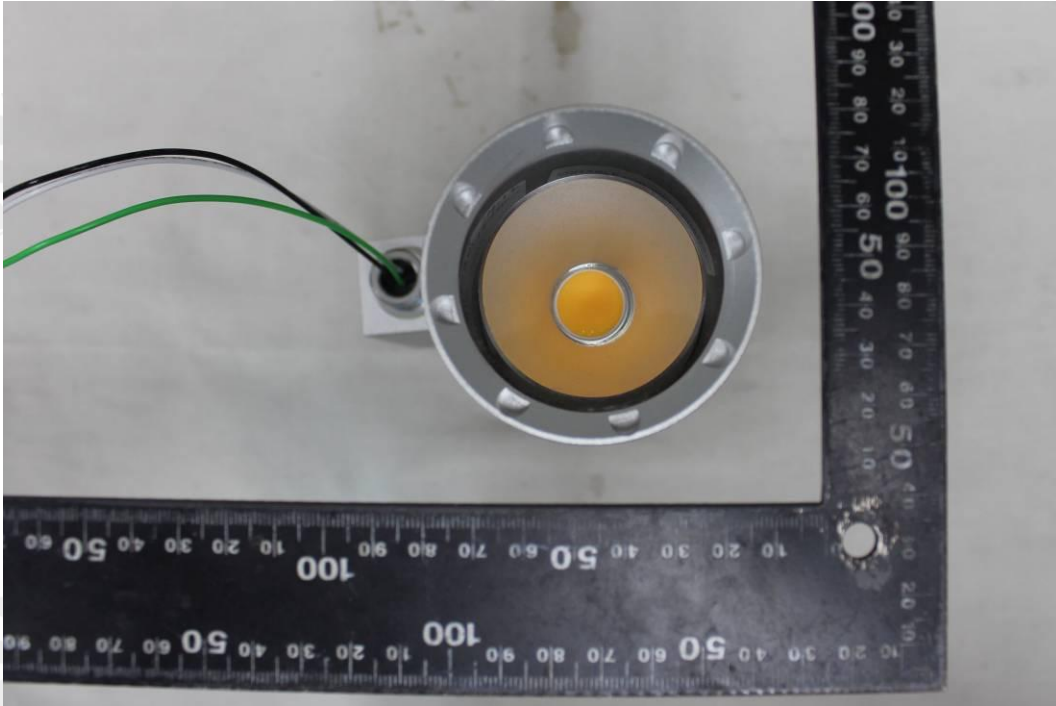


Back View

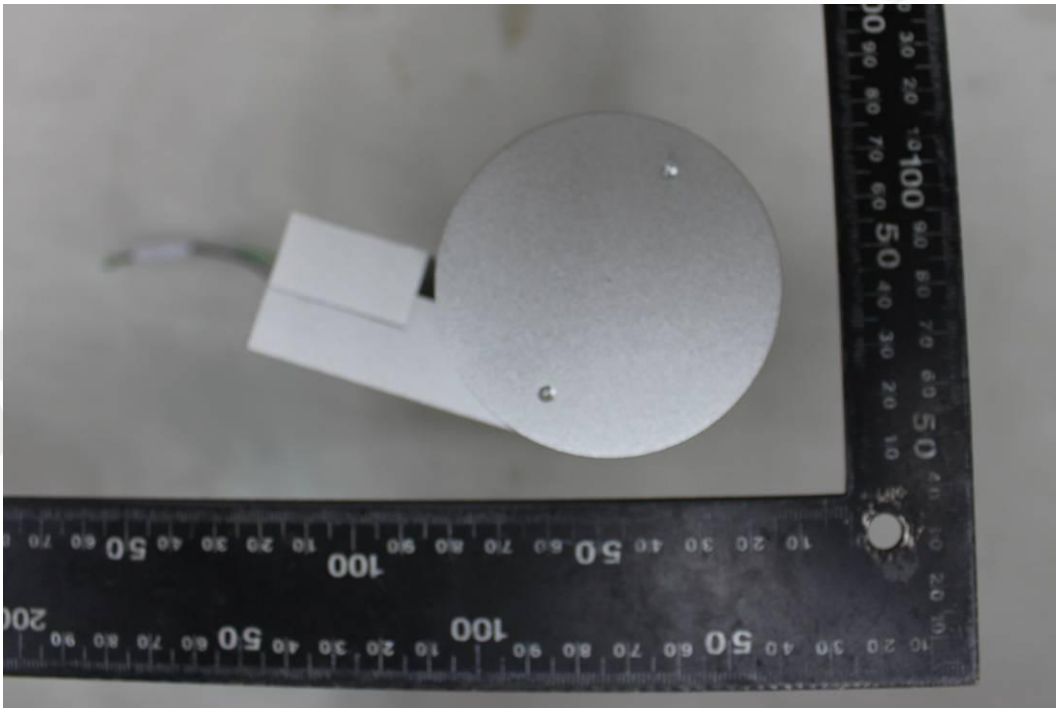
Unless otherwise stated the results shown in this test report refer only to the sample(s) tested. This test report cannot be reproduced, except in full, without prior written permission of the Company. 除非另有說明，此報告結果僅對測試之樣品負責。本報告未經本公司書面許可，不可部份複製。

This document is issued by the Company subject to its General Conditions of Service printed overleaf, available on request or accessible at www.sgs.com/terms_and_conditions.htm and, for electronic format documents, subject to Terms and Conditions for Electronic Documents at www.sgs.com/en/Terms-and-Conditions/Terms-e-Documents. Attention is drawn to the limitation of liability, indemnification and jurisdiction issues defined therein. Any holder of this document is advised that information contained hereon reflects the Company's findings at the time of its intervention only and within the limits of Client's instructions, if any. The Company's sole responsibility is to its Client and this document does not exonerate parties to a transaction from exercising all their rights and obligations under the transaction documents. This document cannot be reproduced except in full, without prior written approval of the Company. Any unauthorized alteration, forgery or falsification of the content or appearance of this document is unlawful and offenders may be prosecuted to the fullest extent of the law.

9 PHOTO



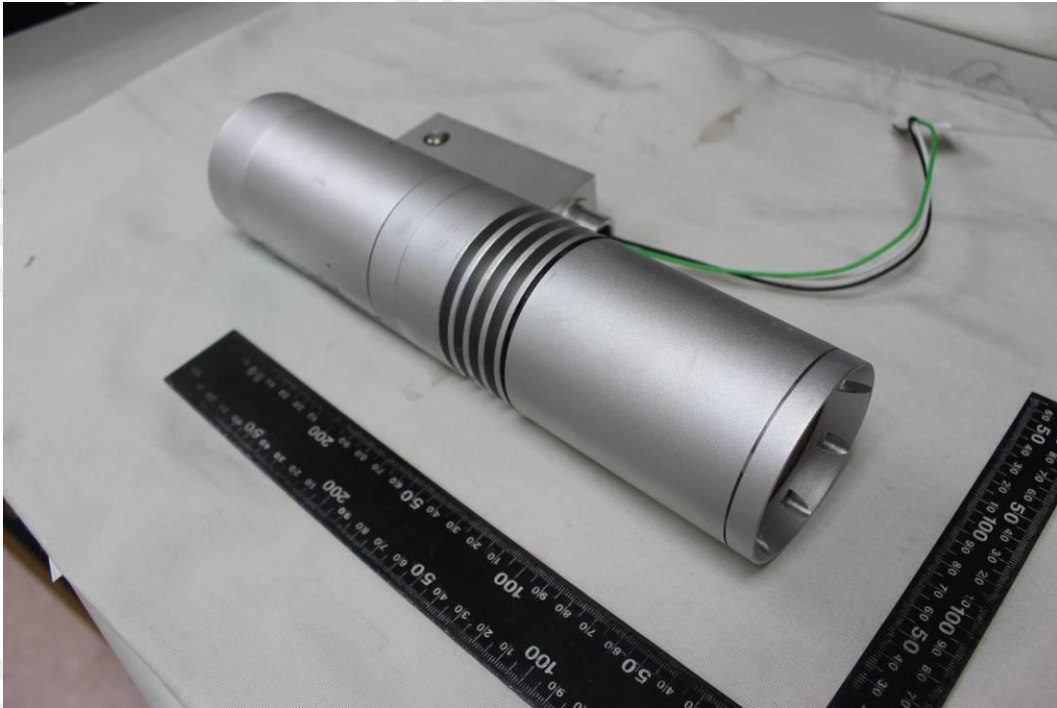
Front View



Back View

Unless otherwise stated the results shown in this test report refer only to the sample(s) tested. This test report cannot be reproduced, except in full, without prior written permission of the Company. 除非另有說明，此報告結果僅對測試之樣品負責。本報告未經本公司書面許可，不可部份複製。

This document is issued by the Company subject to its General Conditions of Service printed overleaf, available on request or accessible at www.sgs.com/terms_and_conditions.htm and, for electronic format documents, subject to Terms and Conditions for Electronic Documents at www.sgs.com/en/Terms-and-Conditions/Terms-e-Document. Attention is drawn to the limitation of liability, indemnification and jurisdiction issues defined therein. Any holder of this document is advised that information contained hereon reflects the Company's findings at the time of its intervention only and within the limits of Client's instructions, if any. The Company's sole responsibility is to its Client and this document does not exonerate parties to a transaction from exercising all their rights and obligations under the transaction documents. This document cannot be reproduced except in full, without prior written approval of the Company. Any unauthorized alteration, forgery or falsification of the content or appearance of this document is unlawful and offenders may be prosecuted to the fullest extent of the law.



DUT



Side View

Unless otherwise stated the results shown in this test report refer only to the sample(s) tested. This test report cannot be reproduced, except in full, without prior written permission of the Company. 除非另有說明，此報告結果僅對測試之樣品負責。本報告未經本公司書面許可，不可部份複製。

This document is issued by the Company subject to its General Conditions of Service printed overleaf, available on request or accessible at www.sgs.com/terms_and_conditions.htm and, for electronic format documents, subject to Terms and Conditions for Electronic Documents at www.sgs.com/en/Terms-and-Conditions/Terms-e-Documents. Attention is drawn to the limitation of liability, indemnification and jurisdiction issues defined therein. Any holder of this document is advised that information contained hereon reflects the Company's findings at the time of its intervention only and within the limits of Client's instructions, if any. The Company's sole responsibility is to its Client and this document does not exonerate parties to a transaction from exercising all their rights and obligations under the transaction documents. This document cannot be reproduced except in full, without prior written approval of the Company. Any unauthorized alteration, forgery or falsification of the content or appearance of this document is unlawful and offenders may be prosecuted to the fullest extent of the law.

**Appendix A: Photometric Data**

GammaC	0.0	2.5	5.0	7.5	10.0	12.5	15.0	17.5	20.0	22.5	25.0	27.5	30.0
0.0	4984.84	4984.84	4984.84	4984.84	4984.84	4984.84	4984.84	4984.84	4984.84	4984.84	4984.84	4984.84	4984.84
2.5	4818.36	4816.28	4814.61	4813.47	4812.51	4811.33	4810.24	4809.43	4808.92	4808.81	4808.99	4809.28	4809.89
5.0	4539.23	4536.72	4534.30	4531.90	4529.73	4527.90	4526.56	4525.98	4526.05	4527.02	4528.19	4528.57	4529.26
7.5	4142.83	4138.85	4135.52	4132.83	4130.74	4129.24	4128.24	4127.73	4127.48	4127.00	4127.02	4128.23	4130.23
10.0	3642.92	3637.75	3633.63	3630.70	3628.52	3626.61	3625.22	3624.45	3624.29	3624.78	3625.95	3627.90	3630.48
12.5	3085.38	3079.77	3075.03	3071.14	3068.14	3066.13	3064.89	3064.28	3064.31	3064.81	3066.18	3068.98	3072.49
15.0	2544.66	2539.23	2534.85	2531.70	2529.23	2526.74	2524.72	2523.45	2522.86	2522.90	2523.87	2526.41	2529.49
17.5	2029.09	2024.45	2020.57	2017.55	2015.10	2012.84	2011.21	2010.69	2010.86	2011.30	2012.53	2015.11	2018.41
20.0	1497.82	1494.29	1491.40	1489.20	1487.57	1486.47	1485.78	1485.24	1485.22	1485.93	1487.53	1490.44	1494.13
22.5	980.57	978.45	977.22	976.98	977.44	978.49	979.63	979.96	980.54	982.35	984.66	986.71	989.61
25.0	559.39	557.73	556.66	556.14	556.31	557.58	559.07	559.84	560.49	561.21	562.28	564.09	566.53
27.5	336.25	335.99	335.86	335.86	335.96	336.04	336.36	337.30	338.42	339.33	340.24	341.20	342.43
30.0	231.72	231.91	232.08	232.19	232.37	232.76	233.28	233.89	234.60	235.37	236.28	237.43	238.75
32.5	168.29	168.54	168.80	169.05	169.36	169.83	170.40	171.00	171.67	172.39	173.19	174.07	175.05
35.0	126.07	126.84	127.47	127.92	128.31	128.73	129.18	129.72	130.31	130.94	131.61	132.33	133.13
37.5	95.77	96.08	96.43	96.83	97.26	97.65	98.07	98.56	99.09	99.60	100.16	100.83	101.55
40.0	74.87	75.20	75.55	75.94	76.34	76.76	77.18	77.62	78.06	78.52	79.00	79.53	80.10
42.5	59.64	59.97	60.30	60.63	60.98	61.34	61.72	62.09	62.47	62.87	63.30	63.76	64.23
45.0	48.14	48.41	48.70	49.02	49.34	49.66	49.99	50.31	50.64	50.98	51.32	51.68	52.04
47.5	39.18	39.46	39.73	39.99	40.26	40.54	40.82	41.09	41.35	41.60	41.85	42.11	42.37
50.0	32.34	32.56	32.78	33.00	33.21	33.42	33.63	33.83	34.03	34.21	34.40	34.59	34.78
52.5	26.94	27.15	27.34	27.50	27.66	27.83	28.00	28.16	28.31	28.45	28.58	28.70	28.82
55.0	22.66	22.82	22.97	23.12	23.27	23.40	23.52	23.63	23.73	23.83	23.91	24.00	24.07
57.5	19.24	19.37	19.49	19.60	19.71	19.80	19.89	19.97	20.05	20.11	20.18	20.23	20.27
60.0	16.52	16.63	16.73	16.82	16.90	16.98	17.06	17.13	17.18	17.23	17.26	17.29	17.31
62.5	13.91	13.99	14.08	14.15	14.22	14.30	14.37	14.42	14.47	14.51	14.54	14.56	14.57
65.0	11.10	11.18	11.25	11.31	11.37	11.42	11.46	11.53	11.60	11.64	11.67	11.70	11.72
67.5	8.30	8.35	8.39	8.44	8.48	8.52	8.57	8.61	8.66	8.71	8.75	8.78	8.80
70.0	5.68	5.72	5.76	5.79	5.83	5.86	5.90	5.94	5.99	6.04	6.08	6.12	6.15
72.5	3.67	3.70	3.73	3.76	3.78	3.81	3.85	3.90	3.95	4.00	4.05	4.09	4.13
75.0	1.88	1.87	1.88	1.92	1.96	1.99	2.03	2.07	2.11	2.17	2.22	2.26	2.30
77.5	0.70	0.71	0.71	0.71	0.71	0.71	0.71	0.71	0.72	0.72	0.72	0.71	0.71
80.0	0.51	0.51	0.51	0.51	0.51	0.51	0.51	0.51	0.51	0.51	0.51	0.51	0.51
82.5	0.30	0.31	0.31	0.32	0.32	0.33	0.33	0.33	0.33	0.33	0.33	0.32	0.32
85.0	0.12	0.13	0.14	0.16	0.18	0.20	0.23	0.29	0.34	0.32	0.28	0.26	0.24
87.5	0.02	0.02	0.03	0.03	0.02	0.02	0.02	0.02	0.02	0.02	0.02	0.02	0.02
90.0	0.03	0.02	0.02	0.02	0.02	0.03	0.03	0.03	0.03	0.03	0.02	0.02	0.02
92.5	0.02	0.02	0.02	0.02	0.02	0.02	0.03	0.03	0.03	0.03	0.02	0.02	0.02
95.0	0.02	0.02	0.02	0.02	0.02	0.02	0.02	0.02	0.02	0.02	0.02	0.02	0.02
97.5	0.02	0.02	0.02	0.02	0.02	0.02	0.02	0.02	0.02	0.02	0.02	0.02	0.02
100.0	0.01	0.02	0.02	0.02	0.02	0.02	0.02	0.02	0.02	0.02	0.02	0.02	0.02
102.5	0.01	0.02	0.02	0.02	0.02	0.02	0.02	0.02	0.02	0.02	0.02	0.02	0.02
105.0	0.01	0.01	0.01	0.02	0.01	0.02	0.02	0.02	0.02	0.01	0.01	0.01	0.01
107.5	0.01	0.01	0.01	0.01	0.01	0.01	0.01	0.01	0.01	0.01	0.01	0.01	0.01
110.0	0.01	0.01	0.01	0.01	0.01	0.01	0.01	0.01	0.01	0.01	0.01	0.01	0.01
112.5	0.01	0.01	0.01	0.01	0.01	0.01	0.01	0.01	0.01	0.01	0.01	0.01	0.01
115.0	0.01	0.01	0.01	0.01	0.01	0.01	0.01	0.01	0.01	0.01	0.01	0.01	0.01
117.5	0.01	0.01	0.01	0.01	0.01	0.01	0.01	0.01	0.01	0.01	0.01	0.01	0.01
120.0	0.01	0.01	0.01	0.01	0.01	0.01	0.01	0.01	0.01	0.01	0.01	0.01	0.01
122.5	0.01	0.01	0.01	0.01	0.01	0.01	0.01	0.01	0.01	0.01	0.01	0.01	0.01
125.0	0.01	0.01	0.01	0.01	0.01	0.01	0.01	0.01	0.01	0.01	0.01	0.01	0.01
127.5	0.01	0.01	0.01	0.01	0.01	0.01	0.01	0.01	0.01	0.01	0.01	0.01	0.01
130.0	0.01	0.01	0.01	0.01	0.01	0.01	0.01	0.01	0.01	0.01	0.01	0.01	0.01
132.5	0.01	0.01	0.01	0.01	0.01	0.01	0.01	0.01	0.01	0.01	0.01	0.01	0.01
135.0	0.01	0.01	0.01	0.01	0.01	0.01	0.01	0.01	0.01	0.01	0.01	0.01	0.01
137.5	0.01	0.01	0.01	0.01	0.01	0.01	0.01	0.01	0.01	0.01	0.01	0.01	0.01
140.0	0.01	0.01	0.01	0.01	0.01	0.01	0.01	0.01	0.01	0.01	0.01	0.01	0.01
142.5	0.01	0.01	0.01	0.01	0.01	0.01	0.01	0.01	0.01	0.01	0.01	0.01	0.01
145.0	0.01	0.01	0.01	0.01	0.01	0.01	0.01	0.01	0.01	0.01	0.01	0.01	0.01
147.5	0.01	0.01	0.01	0.01	0.01	0.01	0.01	0.01	0.01	0.01	0.01	0.01	0.01
150.0	0.01	0.02	0.02	0.02	0.01	0.01	0.01	0.01	0.01	0.01	0.01	0.01	0.01
152.5	0.02	0.02	0.02	0.02	0.02	0.02	0.02	0.02	0.02	0.02	0.01	0.02	0.02
155.0	0.02	0.02	0.02	0.02	0.02	0.02	0.02	0.02	0.02	0.02	0.02	0.02	0.02
157.5	0.02	0.02	0.02	0.02	0.02	0.02	0.02	0.02	0.02	0.01	0.01	0.01	0.02
160.0	0.02	0.02	0.02	0.02	0.02	0.02	0.02	0.02	0.02	0.02	0.02	0.02	0.01
162.5	0.01	0.01	0.01	0.01	0.01	0.01	0.02	0.01	0.01	0.01	0.01	0.01	0.01
165.0	0.01	0.01	0.01	0.01	0.01	0.01	0.01	0.01	0.01	0.01	0.01	0.01	0.01
167.5	0.01	0.01	0.01	0.01	0.01	0.01	0.01	0.01	0.01	0.01	0.01	0.01	0.01
170.0	0.01	0.01	0.01	0.01	0.01	0.01	0.01	0.01	0.01	0.01	0.01	0.01	0.01
172.5	0.01	0.01	0.01	0.01	0.01	0.01	0.01	0.01	0.01	0.01	0.01	0.01	0.01
175.0	0.01	0.01	0.02	0.01	0.01	0.01	0.01	0.01	0.01	0.01	0.01	0.01	0.01
177.5	0.01	0.01	0.01	0.01	0.01	0.01	0.01	0.01	0.01	0.01	0.01	0.01	0.01
180.0	0.01	0.01	0.01	0.01	0.01	0.01	0.01	0.01	0.01	0.01	0.01	0.01	0.01

UNIT: cd

Unless otherwise stated the results shown in this test report refer only to the sample(s) tested. This test report cannot be reproduced, except in full, without prior written permission of the Company. 除非另有說明，此報告結果僅對測試之樣品負責。本報告未經本公司書面許可，不可部份複製。

This document is issued by the Company subject to its General Conditions of Service printed overleaf, available on request or accessible at www.sgs.com/terms_and_conditions.htm and, for electronic format documents, subject to Terms and Conditions for Electronic Documents at www.sgs.com/en/Terms-and-Conditions/Terms-e-Document. Attention is drawn to the limitation of liability, indemnification and jurisdiction issues defined therein. Any holder of this document is advised that information contained hereon reflects the Company's findings at the time of its intervention only and within the limits of Client's instructions, if any. The Company's sole responsibility is to its Client and this document does not exonerate parties to a transaction from exercising all their rights and obligations under the transaction documents. This document cannot be reproduced except in full, without prior written approval of the Company. Any unauthorized alteration, forgery or falsification of the content or appearance of this document is unlawful and offenders may be prosecuted to the fullest extent of the law.

Gamma/C	32.5	35.0	37.5	40.0	42.5	45.0	47.5	50.0	52.5	55.0	57.5	60.0	62.5
0.0	4984.84	4984.84	4984.84	4984.84	4984.84	4984.84	4984.84	4984.84	4984.84	4984.84	4984.84	4984.84	4984.84
2.5	4811.06	4812.47	4813.84	4815.33	4816.96	4818.87	4821.22	4823.85	4826.63	4829.56	4832.53	4835.76	4839.58
5.0	4531.26	4533.78	4536.19	4539.00	4542.67	4546.73	4550.75	4555.07	4559.95	4565.11	4570.12	4575.66	4582.38
7.5	4132.95	4136.06	4139.00	4142.34	4146.48	4151.31	4156.88	4163.19	4170.37	4178.09	4185.92	4194.25	4203.12
10.0	3633.45	3637.10	3641.79	3647.09	3652.52	3658.57	3665.51	3673.42	3682.61	3692.63	3703.12	3714.05	3724.89
12.5	3075.91	3080.03	3085.66	3091.90	3097.78	3104.32	3112.40	3121.54	3131.65	3142.41	3153.45	3164.90	3176.47
15.0	2531.97	2534.82	2538.68	2543.48	2549.52	2556.33	2563.39	2571.13	2579.98	2589.32	2598.30	2607.99	2619.22
17.5	2021.90	2025.77	2029.96	2034.68	2040.11	2046.21	2053.09	2060.49	2068.27	2076.28	2084.10	2092.44	2101.75
20.0	1498.28	1502.55	1506.20	1510.11	1514.93	1520.65	1527.85	1535.34	1543.74	1548.22	1555.59	1563.70	1572.60
22.5	994.75	1000.46	1005.29	1009.97	1014.56	1019.56	1025.61	1032.42	1040.18	1048.04	1054.86	1061.73	1069.19
25.0	569.72	573.42	577.48	581.73	585.80	590.07	594.76	599.89	605.66	611.75	617.86	624.18	630.67
27.5	344.26	346.34	348.36	350.51	352.89	355.46	358.22	361.19	364.36	367.79	371.55	375.54	379.70
30.0	240.23	241.85	243.60	245.51	247.60	249.87	252.36	255.01	257.81	260.68	263.49	266.46	269.86
32.5	176.20	177.46	178.80	180.26	181.93	183.73	185.65	187.68	189.80	192.02	194.38	196.78	199.08
35.0	134.02	135.00	136.09	137.28	138.63	140.02	141.26	142.58	144.27	146.01	147.48	148.96	150.66
37.5	102.25	103.00	103.85	104.78	105.79	106.88	108.08	109.36	110.68	112.04	113.49	114.93	116.24
40.0	80.69	81.31	81.97	82.68	83.45	84.29	85.19	86.13	87.08	88.03	89.00	89.95	90.84
42.5	64.69	65.16	65.67	66.22	66.81	67.42	68.04	68.67	69.32	69.98	70.63	71.27	71.83
45.0	52.39	52.75	53.10	53.47	53.87	54.29	54.73	55.16	55.57	55.97	56.36	56.74	57.07
47.5	42.64	42.90	43.14	43.40	43.67	43.95	44.22	44.47	44.72	44.95	45.18	45.39	45.58
50.0	34.97	35.14	35.29	35.44	35.61	35.77	35.91	36.05	36.19	36.32	36.42	36.50	36.59
52.5	28.94	29.04	29.14	29.24	29.32	29.39	29.45	29.51	29.56	29.60	29.63	29.64	29.66
55.0	24.12	24.18	24.25	24.31	24.35	24.37	24.39	24.40	24.39	24.37	24.35	24.33	24.29
57.5	20.31	20.34	20.37	20.38	20.38	20.37	20.36	20.34	20.31	20.29	20.25	20.20	20.15
60.0	17.33	17.34	17.34	17.34	17.32	17.28	17.24	17.19	17.14	17.09	17.04	17.00	16.93
62.5	14.57	14.57	14.57	14.55	14.53	14.50	14.46	14.41	14.37	14.32	14.28	14.24	14.19
65.0	11.72	11.71	11.70	11.69	11.68	11.65	11.62	11.59	11.55	11.50	11.44	11.39	11.34
67.5	8.81	8.81	8.82	8.83	8.83	8.82	8.81	8.80	8.77	8.74	8.70	8.67	8.63
70.0	6.19	6.22	6.25	6.28	6.31	6.33	6.34	6.34	6.33	6.32	6.30	6.28	6.26
72.5	4.16	4.20	4.25	4.30	4.34	4.36	4.38	4.39	4.40	4.40	4.40	4.40	4.41
75.0	2.34	2.39	2.43	2.47	2.51	2.55	2.57	2.58	2.62	2.65	2.67	2.70	2.75
77.5	0.71	0.71	0.71	0.71	0.72	0.72	0.72	0.72	0.72	0.73	0.73	0.73	0.74
80.0	0.51	0.51	0.52	0.52	0.52	0.52	0.52	0.52	0.52	0.52	0.52	0.53	0.53
82.5	0.31	0.31	0.31	0.31	0.31	0.31	0.32	0.32	0.33	0.33	0.34	0.34	0.34
85.0	0.22	0.20	0.18	0.18	0.18	0.20	0.24	0.29	0.35	0.41	0.41	0.43	0.58
87.5	0.02	0.02	0.02	0.02	0.02	0.02	0.02	0.03	0.03	0.02	0.02	0.02	0.02
90.0	0.02	0.02	0.03	0.03	0.03	0.03	0.02	0.02	0.02	0.02	0.03	0.03	0.03
92.5	0.02	0.02	0.03	0.03	0.03	0.02	0.02	0.02	0.02	0.02	0.03	0.03	0.03
95.0	0.02	0.02	0.02	0.03	0.02	0.02	0.02	0.02	0.02	0.02	0.02	0.02	0.02
97.5	0.02	0.02	0.02	0.02	0.02	0.02	0.02	0.02	0.02	0.02	0.02	0.02	0.02
100.0	0.02	0.02	0.02	0.02	0.02	0.02	0.02	0.02	0.02	0.02	0.02	0.02	0.02
102.5	0.02	0.02	0.02	0.02	0.02	0.02	0.02	0.02	0.02	0.02	0.02	0.02	0.02
105.0	0.01	0.01	0.01	0.01	0.01	0.02	0.02	0.02	0.02	0.02	0.02	0.02	0.02
107.5	0.01	0.01	0.01	0.01	0.01	0.01	0.01	0.01	0.01	0.01	0.01	0.01	0.01
110.0	0.01	0.01	0.01	0.01	0.01	0.01	0.01	0.01	0.01	0.01	0.01	0.01	0.01
112.5	0.01	0.01	0.01	0.01	0.01	0.01	0.01	0.01	0.01	0.01	0.01	0.01	0.01
115.0	0.01	0.01	0.01	0.01	0.01	0.01	0.01	0.01	0.01	0.01	0.01	0.01	0.01
117.5	0.01	0.01	0.01	0.01	0.01	0.01	0.01	0.01	0.01	0.01	0.01	0.01	0.01
120.0	0.01	0.01	0.01	0.01	0.01	0.01	0.01	0.01	0.01	0.01	0.01	0.01	0.01
122.5	0.01	0.01	0.01	0.01	0.01	0.01	0.01	0.01	0.01	0.01	0.01	0.01	0.01
125.0	0.01	0.01	0.01	0.01	0.01	0.01	0.01	0.01	0.01	0.01	0.01	0.01	0.01
127.5	0.01	0.01	0.01	0.01	0.01	0.01	0.01	0.01	0.01	0.01	0.01	0.01	0.01
130.0	0.01	0.01	0.01	0.01	0.01	0.01	0.01	0.01	0.01	0.01	0.01	0.01	0.01
132.5	0.01	0.01	0.01	0.01	0.01	0.01	0.01	0.01	0.01	0.01	0.01	0.01	0.01
135.0	0.01	0.01	0.01	0.01	0.01	0.01	0.01	0.01	0.01	0.01	0.01	0.01	0.01
137.5	0.01	0.01	0.01	0.01	0.01	0.01	0.01	0.01	0.01	0.01	0.01	0.01	0.01
140.0	0.01	0.01	0.01	0.01	0.01	0.01	0.01	0.01	0.01	0.01	0.01	0.01	0.01
142.5	0.01	0.01	0.01	0.01	0.01	0.01	0.01	0.01	0.01	0.01	0.01	0.01	0.01
145.0	0.01	0.01	0.01	0.01	0.01	0.01	0.01	0.01	0.01	0.01	0.01	0.01	0.01
147.5	0.01	0.01	0.01	0.01	0.01	0.01	0.01	0.01	0.01	0.01	0.01	0.01	0.01
150.0	0.01	0.01	0.02	0.02	0.02	0.01	0.01	0.01	0.01	0.01	0.01	0.01	0.01
152.5	0.02	0.02	0.01	0.01	0.02	0.02	0.02	0.02	0.02	0.02	0.02	0.02	0.02
155.0	0.02	0.02	0.02	0.01	0.02	0.02	0.02	0.02	0.02	0.02	0.02	0.02	0.02
157.5	0.02	0.02	0.01	0.01	0.02	0.02	0.02	0.02	0.02	0.02	0.02	0.02	0.02
160.0	0.01	0.01	0.01	0.01	0.01	0.02	0.02	0.02	0.02	0.02	0.02	0.02	0.02
162.5	0.01	0.01	0.01	0.01	0.01	0.01	0.01	0.01	0.01	0.01	0.01	0.01	0.01
165.0	0.01	0.01	0.01	0.01	0.01	0.01	0.01	0.01	0.01	0.01	0.01	0.01	0.01
167.5	0.01	0.01	0.01	0.01	0.01	0.01	0.01	0.01	0.01	0.01	0.01	0.01	0.01
170.0	0.01	0.01	0.01	0.01	0.01	0.01	0.01	0.01	0.01	0.01	0.01	0.01	0.01
172.5	0.01	0.01	0.01	0.01	0.01	0.01	0.01	0.01	0.01	0.01	0.01	0.01	0.01
175.0	0.01	0.01	0.01	0.01	0.01	0.01	0.01	0.01	0.01	0.01	0.01	0.01	0.01
177.5	0.01	0.01	0.01	0.01	0.01	0.01	0.01	0.01	0.01	0.01	0.01	0.01	0.01
180.0	0.01	0.01	0.01	0.01	0.01	0.01	0.01	0.01	0.01	0.01	0.01	0.01	0.01

UNIT: cd

Unless otherwise stated the results shown in this test report refer only to the sample(s) tested. This test report cannot be reproduced, except in full, without prior written permission of the Company. 除非另有說明，此報告結果僅對測試之樣品負責。本報告未經本公司書面許可，不可部份複製。

This document is issued by the Company subject to its General Conditions of Service printed overleaf, available on request or accessible at www.sgs.com/terms_and_conditions.htm and, for electronic format documents, subject to Terms and Conditions for Electronic Documents at www.sgs.com/en/Terms-and-Conditions/Terms-e-Document. Attention is drawn to the limitation of liability, indemnification and jurisdiction issues defined therein. Any holder of this document is advised that information contained hereon reflects the Company's findings at the time of its intervention only and within the limits of Client's instructions, if any. The Company's sole responsibility is to its Client and this document does not exonerate parties to a transaction from exercising all their rights and obligations under the transaction documents. This document cannot be reproduced except in full, without prior written approval of the Company. Any unauthorized alteration, forgery or falsification of the content or appearance of this document is unlawful and offenders may be prosecuted to the fullest extent of the law.



Gamma/C	65.0	67.5	70.0	72.5	75.0	77.5	80.0	82.5	85.0	87.5	90.0	92.5	95.0
0.0	4984.84	4984.84	4984.84	4984.84	4984.84	4984.84	4984.84	4984.84	4984.84	4984.84	4984.84	4984.84	4984.84
2.5	4843.62	4847.57	4851.61	4856.01	4860.32	4864.34	4867.55	4868.91	4869.79	4871.01	4873.12	4877.34	4882.44
5.0	4589.81	4597.80	4606.02	4614.08	4622.10	4630.19	4638.05	4646.78	4652.30	4647.23	4642.55	4649.42	4659.88
7.5	4213.18	4225.95	4238.87	4249.25	4259.08	4269.93	4280.48	4291.66	4298.35	4290.66	4283.85	4293.60	4308.68
10.0	3736.87	3751.97	3767.47	3780.81	3793.46	3806.19	3818.62	3833.57	3842.18	3829.05	3816.68	3827.91	3846.29
12.5	3189.09	3204.17	3219.93	3235.03	3249.64	3263.23	3276.59	3294.28	3304.52	3287.78	3271.78	3284.66	3305.63
15.0	2631.84	2646.55	2661.58	2675.07	2687.96	2700.55	2712.90	2728.35	2737.30	2723.34	2710.13	2721.83	2740.50
17.5	2112.39	2125.55	2139.17	2151.28	2162.73	2173.44	2184.21	2199.94	2208.19	2188.69	2169.75	2180.00	2198.28
20.0	1582.61	1594.68	1607.03	1617.83	1628.20	1638.82	1649.06	1661.78	1667.15	1647.79	1629.14	1637.11	1652.84
22.5	1077.71	1088.57	1099.89	1109.95	1119.56	1129.03	1138.18	1150.21	1155.28	1136.49	1118.31	1125.71	1140.34
25.0	637.76	646.29	654.96	662.62	669.67	675.96	681.99	690.69	694.67	681.76	669.12	673.94	683.97
27.5	383.97	388.35	392.64	396.61	400.31	403.69	406.94	409.95	413.67	419.79	426.05	430.32	434.00
30.0	273.47	277.18	280.88	284.42	287.70	290.43	293.01	296.62	298.65	295.09	291.37	292.86	295.75
32.5	201.50	204.39	207.20	209.40	211.25	212.85	214.25	215.93	216.62	214.20	211.72	212.23	213.64
35.0	152.50	154.64	156.64	157.94	159.08	160.53	161.81	162.86	162.88	160.18	157.41	157.28	157.93
37.5	117.58	119.20	120.68	121.56	122.16	122.62	122.95	123.49	123.43	121.51	119.51	119.23	119.40
40.0	91.74	92.85	93.86	94.47	94.87	95.14	95.29	95.57	95.41	93.95	92.40	92.02	91.93
42.5	72.43	73.21	73.92	74.29	74.49	74.61	74.66	74.81	74.64	73.47	72.24	71.89	71.76
45.0	57.43	57.94	58.41	58.62	58.72	58.75	58.75	58.83	58.69	57.81	56.88	56.61	56.50
47.5	45.79	46.13	46.44	46.54	46.56	46.55	46.51	46.53	46.40	45.79	45.17	45.00	44.94
50.0	36.71	36.94	37.15	37.19	37.16	37.10	37.04	37.04	36.94	36.51	36.07	35.94	35.89
52.5	29.70	29.84	29.97	29.99	29.94	29.87	29.78	29.77	29.70	29.37	29.04	28.95	28.93
55.0	24.28	24.36	24.43	24.40	24.35	24.28	24.22	24.20	24.14	23.89	23.63	23.59	23.59
57.5	20.12	20.17	20.21	20.18	20.11	20.03	19.94	19.91	19.86	19.67	19.48	19.43	19.43
60.0	16.89	16.93	16.96	16.92	16.85	16.77	16.71	16.67	16.62	16.49	16.37	16.34	16.35
62.5	14.15	14.18	14.20	14.17	14.11	14.05	13.99	13.98	13.95	13.85	13.74	13.73	13.74
65.0	11.32	11.34	11.37	11.34	11.29	11.25	11.22	11.23	11.22	11.14	11.06	11.07	11.10
67.5	8.60	8.62	8.65	8.63	8.61	8.59	8.58	8.59	8.59	8.50	8.42	8.44	8.49
70.0	6.25	6.27	6.28	6.25	6.22	6.19	6.18	6.18	6.17	6.11	6.05	6.04	6.06
72.5	4.41	4.43	4.44	4.42	4.39	4.36	4.34	4.34	4.32	4.22	4.12	4.11	4.13
75.0	2.81	2.86	2.89	2.90	2.89	2.87	2.85	2.86	2.85	2.76	2.67	2.65	2.66
77.5	0.74	0.75	0.76	0.76	0.76	0.76	0.76	0.76	0.76	0.75	0.74	0.74	0.75
80.0	0.53	0.54	0.54	0.55	0.55	0.55	0.55	0.55	0.55	0.54	0.54	0.54	0.54
82.5	0.34	0.34	0.34	0.34	0.34	0.34	0.34	0.34	0.34	0.33	0.33	0.33	0.33
85.0	0.71	0.63	0.50	0.41	0.35	0.32	0.30	0.30	0.30	0.30	0.30	0.32	0.34
87.5	0.02	0.03	0.03	0.03	0.03	0.03	0.03	0.03	0.03	0.03	0.03	0.03	0.03
90.0	0.03	0.03	0.03	0.02	0.02	0.02	0.02	0.03	0.03	0.03	0.03	0.03	0.02
92.5	0.03	0.03	0.02	0.02	0.02	0.02	0.02	0.03	0.03	0.03	0.03	0.03	0.02
95.0	0.03	0.02	0.02	0.02	0.02	0.02	0.02	0.02	0.03	0.03	0.02	0.02	0.02
97.5	0.02	0.02	0.02	0.02	0.02	0.02	0.02	0.02	0.02	0.02	0.02	0.02	0.02
100.0	0.02	0.02	0.02	0.02	0.02	0.02	0.02	0.02	0.02	0.02	0.02	0.02	0.02
102.5	0.02	0.02	0.02	0.02	0.02	0.02	0.02	0.02	0.02	0.02	0.02	0.02	0.02
105.0	0.02	0.02	0.02	0.02	0.02	0.01	0.01	0.01	0.01	0.01	0.02	0.02	0.02
107.5	0.02	0.02	0.01	0.01	0.01	0.01	0.01	0.02	0.01	0.01	0.00	0.01	0.01
110.0	0.01	0.01	0.01	0.01	0.01	0.01	0.01	0.01	0.01	0.02	0.03	0.02	0.02
112.5	0.01	0.01	0.01	0.01	0.01	0.01	0.01	0.01	0.01	0.01	0.00	0.01	0.04
115.0	0.01	0.01	0.01	0.01	0.01	0.01	0.01	0.01	0.01	0.01	0.01	0.01	0.01
117.5	0.01	0.01	0.01	0.01	0.01	0.01	0.01	0.01	0.01	0.01	0.01	0.01	0.01
120.0	0.01	0.01	0.01	0.01	0.01	0.01	0.01	0.01	0.01	0.01	0.01	0.01	0.01
122.5	0.01	0.01	0.01	0.01	0.01	0.01	0.01	0.01	0.01	0.01	0.01	0.01	0.01
125.0	0.01	0.01	0.01	0.01	0.01	0.01	0.01	0.01	0.01	0.01	0.01	0.01	0.01
127.5	0.01	0.01	0.01	0.01	0.01	0.01	0.01	0.01	0.01	0.01	0.01	0.01	0.01
130.0	0.01	0.01	0.01	0.01	0.01	0.01	0.01	0.01	0.01	0.01	0.01	0.01	0.01
132.5	0.01	0.01	0.01	0.01	0.01	0.01	0.01	0.01	0.01	0.01	0.01	0.01	0.01
135.0	0.01	0.01	0.01	0.01	0.01	0.01	0.01	0.01	0.01	0.01	0.01	0.01	0.01
137.5	0.01	0.01	0.01	0.01	0.01	0.01	0.01	0.01	0.01	0.01	0.01	0.01	0.01
140.0	0.01	0.01	0.01	0.01	0.01	0.01	0.01	0.01	0.01	0.01	0.01	0.01	0.01
142.5	0.01	0.01	0.01	0.01	0.01	0.01	0.01	0.01	0.01	0.01	0.01	0.01	0.01
145.0	0.01	0.01	0.01	0.01	0.01	0.01	0.01	0.01	0.01	0.01	0.01	0.01	0.01
147.5	0.01	0.01	0.02	0.02	0.01	0.01	0.01	0.01	0.01	0.01	0.01	0.01	0.01
150.0	0.01	0.01	0.01	0.01	0.02	0.02	0.02	0.02	0.02	0.02	0.01	0.01	0.01
152.5	0.02	0.02	0.02	0.02	0.02	0.02	0.02	0.02	0.02	0.02	0.02	0.02	0.02
155.0	0.02	0.02	0.02	0.02	0.02	0.02	0.02	0.02	0.02	0.02	0.02	0.02	0.02
157.5	0.02	0.02	0.02	0.02	0.02	0.02	0.02	0.02	0.02	0.02	0.02	0.02	0.02
160.0	0.01	0.01	0.01	0.01	0.01	0.01	0.01	0.01	0.01	0.02	0.02	0.02	0.02
162.5	0.01	0.01	0.01	0.01	0.01	0.01	0.01	0.01	0.01	0.01	0.02	0.02	0.01
165.0	0.01	0.01	0.01	0.01	0.01	0.01	0.01	0.01	0.01	0.01	0.01	0.01	0.01
167.5	0.01	0.01	0.01	0.01	0.01	0.01	0.01	0.01	0.01	0.01	0.01	0.01	0.01
170.0	0.01	0.01	0.01	0.01	0.01	0.01	0.01	0.01	0.01	0.01	0.01	0.01	0.01
172.5	0.01	0.01	0.01	0.01	0.01	0.01	0.01	0.01	0.01	0.01	0.01	0.01	0.01
175.0	0.01	0.01	0.01	0.01	0.01	0.01	0.01	0.01	0.01	0.01	0.01	0.01	0.01
177.5	0.01	0.01	0.01	0.01	0.01	0.01	0.01	0.01	0.01	0.01	0.01	0.01	0.01
180.0	0.01	0.01	0.01	0.01	0.01	0.01	0.01	0.01	0.01	0.01	0.01	0.01	0.01

UNIT: cd

Unless otherwise stated the results shown in this test report refer only to the sample(s) tested. This test report cannot be reproduced, except in full, without prior written permission of the Company. 除非另有說明，此報告結果僅對測試之樣品負責。本報告未經本公司書面許可，不可部份複製。

This document is issued by the Company subject to its General Conditions of Service printed overleaf, available on request or accessible at www.sgs.com/terms_and_conditions.htm and, for electronic format documents, subject to Terms and Conditions for Electronic Documents at www.sgs.com/en/Terms-and-Conditions/Terms-e-Documents. Attention is drawn to the limitation of liability, indemnification and jurisdiction issues defined therein. Any holder of this document is advised that information contained hereon reflects the Company's findings at the time of its intervention only and within the limits of Client's instructions, if any. The Company's sole responsibility is to its Client and this document does not exonerate parties to a transaction from exercising all their rights and obligations under the transaction documents. This document cannot be reproduced except in full, without prior written approval of the Company. Any unauthorized alteration, forgery or falsification of the content or appearance of this document is unlawful and offenders may be prosecuted to the fullest extent of the law.

Gamma/C	97.5	100.0	102.5	105.0	107.5	110.0	112.5	115.0	117.5	120.0	122.5	125.0	127.5
0.0	4984.84	4984.84	4984.84	4984.84	4984.84	4984.84	4984.84	4984.84	4984.84	4984.84	4984.84	4984.84	4984.84
2.5	4887.63	4892.91	4897.94	4902.95	4908.10	4913.35	4918.73	4924.13	4929.31	4934.58	4940.39	4946.13	4951.24
5.0	4669.19	4678.81	4688.65	4698.69	4708.93	4719.31	4729.89	4740.39	4750.48	4760.43	4770.45	4780.38	4790.04
7.5	4322.54	4336.73	4350.43	4364.15	4378.24	4392.36	4406.12	4419.94	4434.17	4448.62	4463.33	4477.93	4491.87
10.0	3861.96	3877.96	3894.07	3910.32	3926.74	3943.22	3959.53	3976.03	3993.22	4010.36	4026.59	4042.73	4059.52
12.5	3321.56	3337.62	3354.96	3372.56	3389.56	3406.59	3424.09	3441.67	3458.88	3476.22	3494.22	3512.28	3530.01
15.0	2754.58	2769.07	2785.57	2802.61	2819.05	2835.56	2852.63	2869.66	2885.91	2902.39	2920.25	2938.25	2955.38
17.5	2211.28	2224.11	2237.41	2251.27	2266.35	2281.64	2296.29	2310.50	2323.79	2337.33	2352.48	2368.20	2383.93
20.0	1664.86	1677.00	1689.27	1701.68	1714.17	1726.98	1740.63	1754.24	1766.75	1779.21	1792.49	1805.99	1819.52
22.5	1150.70	1161.15	1172.43	1183.92	1195.18	1206.41	1217.63	1228.94	1240.63	1252.19	1262.88	1273.69	1285.74
25.0	691.87	700.18	709.10	718.21	727.17	735.98	744.54	752.88	760.98	768.96	776.78	784.88	793.95
27.5	438.24	441.62	442.26	442.68	444.84	448.59	455.19	462.45	468.31	473.69	479.34	483.64	484.34
30.0	297.70	299.67	301.97	304.29	306.37	308.43	310.58	312.77	314.95	317.18	319.56	321.91	324.07
32.5	214.79	216.00	217.15	218.33	219.56	220.86	222.25	223.71	225.23	226.74	228.13	229.48	230.88
35.0	158.27	158.65	159.01	159.44	160.09	160.80	161.43	162.08	162.82	163.59	164.29	165.00	165.75
37.5	119.21	119.01	118.85	118.78	118.92	119.13	119.30	119.48	119.69	119.93	120.21	120.49	120.76
40.0	91.61	91.29	91.06	90.87	90.71	90.58	90.47	90.39	90.36	90.36	90.35	90.36	90.35
42.5	71.48	71.18	70.87	70.60	70.43	70.29	70.09	69.91	69.78	69.67	69.56	69.43	69.27
45.0	56.26	56.01	55.77	55.54	55.34	55.18	55.07	54.96	54.81	54.64	54.51	54.34	54.04
47.5	44.77	44.57	44.36	44.18	44.06	43.96	43.85	43.73	43.62	43.50	43.33	43.15	42.96
50.0	35.77	35.64	35.52	35.41	35.33	35.25	35.17	35.09	35.00	34.90	34.78	34.65	34.48
52.5	28.87	28.81	28.73	28.66	28.63	28.59	28.53	28.46	28.39	28.30	28.21	28.11	27.99
55.0	23.55	23.51	23.46	23.42	23.39	23.37	23.35	23.33	23.30	23.25	23.19	23.11	23.02
57.5	19.42	19.42	19.39	19.37	19.38	19.40	19.39	19.38	19.36	19.33	19.28	19.22	19.15
60.0	16.35	16.34	16.35	16.36	16.36	16.36	16.35	16.34	16.32	16.29	16.25	16.19	16.12
62.5	13.75	13.77	13.79	13.81	13.83	13.85	13.85	13.85	13.83	13.80	13.77	13.73	13.68
65.0	11.13	11.16	11.20	11.24	11.28	11.31	11.33	11.33	11.33	11.32	11.30	11.28	11.24
67.5	8.53	8.58	8.63	8.68	8.72	8.76	8.79	8.80	8.80	8.80	8.80	8.80	8.78
70.0	6.09	6.13	6.17	6.21	6.24	6.27	6.29	6.32	6.34	6.35	6.36	6.37	6.37
72.5	4.14	4.15	4.17	4.18	4.20	4.21	4.23	4.24	4.25	4.25	4.28	4.30	4.32
75.0	2.64	2.63	2.63	2.63	2.62	2.61	2.60	2.59	2.60	2.61	2.62	2.64	2.66
77.5	0.75	0.76	0.76	0.77	0.77	0.77	0.78	0.78	0.78	0.78	0.79	0.79	0.79
80.0	0.54	0.54	0.54	0.55	0.55	0.55	0.55	0.55	0.56	0.56	0.56	0.57	0.57
82.5	0.34	0.34	0.35	0.35	0.35	0.35	0.35	0.36	0.36	0.36	0.36	0.36	0.36
85.0	0.38	0.43	0.47	0.51	0.51	0.48	0.41	0.33	0.31	0.30	0.30	0.31	0.31
87.5	0.03	0.03	0.03	0.03	0.03	0.03	0.04	0.04	0.04	0.04	0.04	0.04	0.04
90.0	0.02	0.02	0.03	0.03	0.03	0.03	0.03	0.02	0.02	0.02	0.02	0.02	0.03
92.5	0.02	0.02	0.03	0.03	0.03	0.03	0.03	0.02	0.02	0.02	0.02	0.02	0.03
95.0	0.02	0.02	0.02	0.02	0.03	0.03	0.02	0.02	0.02	0.02	0.02	0.02	0.03
97.5	0.02	0.02	0.02	0.02	0.02	0.02	0.02	0.02	0.02	0.02	0.02	0.02	0.02
100.0	0.02	0.02	0.02	0.02	0.02	0.02	0.02	0.02	0.02	0.02	0.02	0.02	0.02
102.5	0.02	0.02	0.02	0.02	0.02	0.02	0.02	0.02	0.02	0.02	0.02	0.02	0.02
105.0	0.02	0.02	0.01	0.01	0.02	0.02	0.02	0.02	0.02	0.01	0.01	0.01	0.01
107.5	0.01	0.01	0.02	0.02	0.02	0.02	0.02	0.02	0.02	0.01	0.01	0.01	0.01
110.0	0.03	0.04	0.04	0.03	0.02	0.01	0.01	0.01	0.01	0.01	0.01	0.01	0.01
112.5	0.09	0.13	0.07	0.01	0.02	0.05	0.03	0.01	0.01	0.02	0.02	0.02	0.01
115.0	0.02	0.03	0.02	0.01	0.01	0.00	0.01	0.02	0.01	0.01	0.04	0.07	0.05
117.5	0.01	0.01	0.01	0.01	0.01	0.01	0.01	0.01	0.01	0.01	0.01	0.01	0.01
120.0	0.01	0.01	0.01	0.01	0.01	0.01	0.01	0.01	0.01	0.01	0.01	0.01	0.01
122.5	0.01	0.01	0.01	0.01	0.01	0.01	0.01	0.01	0.01	0.01	0.01	0.01	0.01
125.0	0.01	0.01	0.01	0.01	0.01	0.01	0.01	0.01	0.01	0.01	0.01	0.01	0.01
127.5	0.01	0.01	0.01	0.01	0.01	0.01	0.01	0.01	0.01	0.01	0.01	0.01	0.01
130.0	0.01	0.01	0.01	0.01	0.01	0.01	0.01	0.01	0.01	0.01	0.01	0.01	0.01
132.5	0.01	0.01	0.01	0.01	0.01	0.01	0.01	0.01	0.01	0.01	0.01	0.01	0.01
135.0	0.01	0.01	0.01	0.01	0.01	0.01	0.01	0.01	0.01	0.01	0.01	0.01	0.01
137.5	0.01	0.01	0.01	0.01	0.01	0.01	0.01	0.01	0.01	0.01	0.01	0.01	0.01
140.0	0.01	0.01	0.01	0.01	0.01	0.01	0.01	0.01	0.01	0.01	0.01	0.01	0.01
142.5	0.01	0.01	0.01	0.01	0.01	0.01	0.01	0.01	0.01	0.01	0.01	0.01	0.01
145.0	0.01	0.01	0.01	0.01	0.01	0.01	0.01	0.01	0.01	0.01	0.01	0.01	0.01
147.5	0.01	0.01	0.01	0.01	0.01	0.01	0.01	0.01	0.01	0.01	0.01	0.01	0.01
150.0	0.01	0.01	0.01	0.01	0.01	0.01	0.01	0.01	0.01	0.01	0.01	0.01	0.01
152.5	0.01	0.01	0.01	0.01	0.01	0.01	0.01	0.01	0.01	0.01	0.01	0.01	0.01
155.0	0.02	0.01	0.01	0.01	0.01	0.01	0.01	0.01	0.01	0.01	0.01	0.01	0.01
157.5	0.02	0.02	0.02	0.02	0.01	0.01	0.01	0.01	0.02	0.01	0.01	0.01	0.01
160.0	0.02	0.01	0.01	0.01	0.01	0.01	0.01	0.01	0.01	0.01	0.01	0.01	0.01
162.5	0.01	0.01	0.01	0.01	0.01	0.01	0.01	0.01	0.01	0.01	0.01	0.01	0.01
165.0	0.01	0.01	0.01	0.01	0.01	0.01	0.01	0.01	0.01	0.01	0.01	0.01	0.01
167.5	0.01	0.01	0.01	0.01	0.01	0.01	0.01	0.01	0.01	0.01	0.01	0.01	0.01
170.0	0.01	0.01	0.01	0.01	0.01	0.01	0.01	0.01	0.01	0.01	0.01	0.01	0.01
172.5	0.01	0.01	0.01	0.01	0.01	0.01	0.01	0.01	0.01	0.01	0.01	0.01	0.01
175.0	0.01	0.01	0.01	0.01	0.01	0.01	0.01	0.01	0.01	0.01	0.01	0.01	0.01
177.5	0.01	0.01	0.01	0.01	0.01	0.01	0.01	0.01	0.01	0.01	0.01	0.01	0.01
180.0	0.01	0.01	0.01	0.01	0.01	0.01	0.01	0.01	0.01	0.01	0.01	0.01	0.01

UNIT: cd

Unless otherwise stated the results shown in this test report refer only to the sample(s) tested. This test report cannot be reproduced, except in full, without prior written permission of the Company. 除非另有說明，此報告結果僅對測試之樣品負責。本報告未經本公司書面許可，不可部份複製。

This document is issued by the Company subject to its General Conditions of Service printed overleaf, available on request or accessible at www.sgs.com/terms_and_conditions.htm and, for electronic format documents, subject to Terms and Conditions for Electronic Documents at www.sgs.com/en/Terms-and-Conditions/Terms-e-Document. Attention is drawn to the limitation of liability, indemnification and jurisdiction issues defined therein. Any holder of this document is advised that information contained hereon reflects the Company's findings at the time of its intervention only and within the limits of Client's instructions, if any. The Company's sole responsibility is to its Client and this document does not exonerate parties to a transaction from exercising all their rights and obligations under the transaction documents. This document cannot be reproduced except in full, without prior written approval of the Company. Any unauthorized alteration, forgery or falsification of the content or appearance of this document is unlawful and offenders may be prosecuted to the fullest extent of the law.

Gamma/C	130.0	132.5	135.0	137.5	140.0	142.5	145.0	147.5	150.0	152.5	155.0	157.5	160.0
0.0	4984.84	4984.84	4984.84	4984.84	4984.84	4984.84	4984.84	4984.84	4984.84	4984.84	4984.84	4984.84	4984.84
2.5	4956.10	4960.84	4965.68	4971.03	4976.43	4981.58	4986.33	4990.20	4993.84	4997.95	5002.02	5005.73	5009.28
5.0	4799.74	4810.04	4820.04	4828.70	4836.99	4845.71	4854.21	4861.88	4869.36	4877.28	4884.96	4891.76	4898.17
7.5	4505.67	4519.78	4533.89	4547.87	4561.54	4574.66	4587.35	4599.77	4611.48	4621.68	4631.58	4642.51	4653.21
10.0	4076.25	4092.26	4108.11	4124.42	4140.28	4154.65	4168.58	4183.11	4197.25	4210.16	4222.42	4234.34	4245.80
12.5	3547.40	3564.33	3580.83	3596.81	3612.56	3628.49	3644.11	3658.98	3673.45	3687.97	3701.81	3714.06	3725.62
15.0	2972.08	2988.58	3004.50	3019.14	3033.63	3049.20	3064.80	3079.79	3094.09	3107.15	3119.63	3132.25	3144.29
17.5	2399.57	2414.79	2429.64	2444.19	2458.09	2472.70	2483.00	2496.13	2509.00	2520.58	2531.83	2543.55	2555.08
20.0	1832.72	1844.78	1856.94	1870.82	1884.50	1895.92	1907.06	1919.79	1932.39	1943.40	1953.96	1964.97	1975.76
22.5	1297.79	1308.76	1319.39	1330.30	1340.88	1350.54	1359.86	1369.15	1378.66	1389.30	1399.48	1407.27	1414.59
25.0	803.26	812.45	821.02	827.74	834.50	843.52	852.51	859.32	865.74	873.17	880.56	887.23	893.40
27.5	484.13	484.59	486.74	493.41	500.79	505.43	509.21	512.81	516.31	520.65	523.86	523.44	521.88
30.0	326.12	328.02	329.94	332.13	334.26	336.00	337.65	339.41	341.17	342.97	344.59	345.71	346.77
32.5	232.29	233.70	235.04	236.24	237.34	238.32	239.24	240.18	241.07	241.90	242.68	243.38	244.08
35.0	166.49	167.13	167.71	168.25	168.74	169.17	169.55	169.89	170.21	170.58	170.93	171.22	171.50
37.5	121.00	121.16	121.31	121.54	121.74	121.80	121.85	122.01	122.14	122.11	122.07	122.17	122.24
40.0	90.34	90.31	90.28	90.25	90.21	90.15	90.06	89.99	89.70	89.61	89.51	89.33	89.13
42.5	69.11	68.99	68.85	68.63	68.41	68.22	68.03	67.78	67.52	67.30	67.08	66.83	66.56
45.0	53.73	53.50	53.33	53.27	53.20	52.99	52.73	52.46	52.16	51.84	51.50	51.16	50.86
47.5	42.74	42.49	42.24	42.01	41.78	41.53	41.26	40.98	40.68	40.40	40.11	39.80	39.49
50.0	34.30	34.11	33.91	33.71	33.49	33.26	33.01	32.74	32.46	32.18	31.90	31.61	31.32
52.5	27.86	27.71	27.55	27.36	27.17	26.97	26.77	26.54	26.30	26.05	25.78	25.52	25.26
55.0	22.91	22.79	22.65	22.50	22.33	22.15	21.95	21.74	21.53	21.33	21.12	20.89	20.65
57.5	19.07	18.97	18.85	18.72	18.57	18.41	18.24	18.07	17.90	17.71	17.52	17.33	17.12
60.0	16.04	15.95	15.85	15.74	15.61	15.49	15.35	15.20	15.05	14.89	14.73	14.56	14.39
62.5	13.61	13.53	13.45	13.36	13.26	13.16	13.05	12.94	12.82	12.70	12.58	12.44	12.30
65.0	11.20	11.14	11.08	11.01	10.94	10.87	10.78	10.69	10.60	10.51	10.41	10.31	10.20
67.5	8.76	8.73	8.69	8.65	8.59	8.53	8.46	8.39	8.32	8.26	8.20	8.15	8.09
70.0	6.36	6.35	6.34	6.31	6.28	6.24	6.19	6.16	6.13	6.11	6.09	6.09	6.09
72.5	4.32	4.32	4.31	4.29	4.27	4.24	4.21	4.20	4.19	4.20	4.21	4.24	4.28
75.0	2.67	2.69	2.70	2.70	2.69	2.67	2.66	2.67	2.68	2.70	2.74	2.80	2.86
77.5	0.80	0.80	0.80	0.80	0.79	0.80	0.80	0.80	0.80	0.81	0.81	0.81	0.82
80.0	0.57	0.57	0.57	0.57	0.57	0.57	0.57	0.57	0.57	0.57	0.57	0.57	0.57
82.5	0.36	0.37	0.37	0.37	0.37	0.37	0.37	0.37	0.38	0.38	0.38	0.38	0.38
85.0	0.32	0.32	0.32	0.32	0.32	0.33	0.35	0.37	0.38	0.38	0.40	0.42	0.43
87.5	0.04	0.04	0.05	0.05	0.05	0.05	0.05	0.05	0.05	0.05	0.05	0.05	0.05
90.0	0.03	0.03	0.02	0.02	0.02	0.02	0.02	0.03	0.03	0.03	0.03	0.03	0.02
92.5	0.03	0.03	0.02	0.02	0.02	0.02	0.02	0.02	0.03	0.03	0.03	0.03	0.02
95.0	0.03	0.03	0.02	0.02	0.02	0.02	0.02	0.02	0.02	0.02	0.03	0.02	0.02
97.5	0.02	0.02	0.02	0.02	0.02	0.02	0.02	0.02	0.02	0.02	0.02	0.02	0.02
100.0	0.02	0.02	0.02	0.02	0.02	0.02	0.02	0.02	0.02	0.02	0.02	0.02	0.02
102.5	0.02	0.02	0.02	0.02	0.02	0.02	0.02	0.02	0.02	0.02	0.01	0.02	0.02
105.0	0.01	0.01	0.02	0.02	0.01	0.02	0.02	0.02	0.02	0.02	0.02	0.01	0.01
107.5	0.01	0.01	0.02	0.01	0.01	0.01	0.01	0.02	0.02	0.02	0.02	0.01	0.01
110.0	0.01	0.01	0.01	0.01	0.01	0.01	0.01	0.01	0.01	0.01	0.01	0.01	0.01
112.5	0.01	0.01	0.01	0.02	0.02	0.02	0.01	0.01	0.01	0.02	0.02	0.02	0.01
115.0	0.03	0.07	0.11	0.13	0.12	0.08	0.03	0.03	0.03	0.04	0.04	0.06	0.07
117.5	0.01	0.01	0.01	0.01	0.01	0.01	0.01	0.01	0.01	0.01	0.01	0.01	0.01
120.0	0.01	0.01	0.01	0.01	0.01	0.01	0.01	0.01	0.01	0.01	0.01	0.01	0.01
122.5	0.01	0.01	0.01	0.01	0.01	0.01	0.01	0.01	0.01	0.01	0.01	0.01	0.01
125.0	0.01	0.01	0.01	0.01	0.01	0.01	0.01	0.01	0.01	0.01	0.01	0.01	0.01
127.5	0.01	0.01	0.01	0.01	0.01	0.01	0.01	0.01	0.01	0.01	0.01	0.01	0.01
130.0	0.01	0.01	0.01	0.01	0.01	0.01	0.01	0.01	0.01	0.01	0.01	0.01	0.01
132.5	0.01	0.01	0.01	0.01	0.01	0.01	0.01	0.01	0.01	0.01	0.01	0.01	0.01
135.0	0.01	0.01	0.01	0.01	0.01	0.01	0.01	0.01	0.01	0.01	0.01	0.01	0.01
137.5	0.01	0.01	0.01	0.01	0.01	0.01	0.01	0.01	0.01	0.01	0.01	0.01	0.01
140.0	0.01	0.01	0.01	0.01	0.01	0.01	0.01	0.01	0.01	0.01	0.01	0.01	0.01
142.5	0.01	0.01	0.01	0.01	0.01	0.01	0.01	0.01	0.01	0.01	0.01	0.01	0.01
145.0	0.01	0.01	0.01	0.01	0.01	0.01	0.01	0.01	0.01	0.01	0.01	0.01	0.01
147.5	0.01	0.01	0.01	0.01	0.01	0.01	0.01	0.01	0.01	0.01	0.01	0.01	0.01
150.0	0.01	0.01	0.01	0.01	0.01	0.01	0.01	0.01	0.01	0.01	0.01	0.01	0.01
152.5	0.01	0.01	0.01	0.01	0.01	0.01	0.01	0.01	0.01	0.01	0.01	0.01	0.01
155.0	0.01	0.01	0.01	0.01	0.01	0.01	0.01	0.01	0.01	0.01	0.01	0.01	0.01
157.5	0.01	0.01	0.01	0.01	0.01	0.01	0.01	0.01	0.01	0.01	0.01	0.01	0.01
160.0	0.01	0.01	0.01	0.01	0.01	0.01	0.01	0.01	0.01	0.01	0.01	0.01	0.01
162.5	0.01	0.01	0.01	0.01	0.01	0.01	0.01	0.01	0.01	0.01	0.01	0.01	0.01
165.0	0.01	0.01	0.01	0.01	0.01	0.01	0.01	0.01	0.01	0.01	0.01	0.01	0.01
167.5	0.01	0.01	0.01	0.01	0.01	0.01	0.01	0.01	0.01	0.01	0.01	0.01	0.01
170.0	0.01	0.01	0.01	0.01	0.01	0.01	0.01	0.01	0.01	0.01	0.01	0.01	0.01
172.5	0.01	0.01	0.01	0.01	0.01	0.01	0.01	0.01	0.01	0.01	0.01	0.01	0.01
175.0	0.01	0.01	0.01	0.01	0.01	0.01	0.01	0.01	0.01	0.01	0.01	0.01	0.01
177.5	0.01	0.01	0.01	0.01	0.01	0.01	0.01	0.01	0.01	0.01	0.01	0.01	0.01
180.0	0.01	0.01	0.01	0.01	0.01	0.01	0.01	0.01	0.01	0.01	0.01	0.01	0.01

UNIT: cd

Unless otherwise stated the results shown in this test report refer only to the sample(s) tested. This test report cannot be reproduced, except in full, without prior written permission of the Company. 除非另有說明，此報告結果僅對測試之樣品負責。本報告未經本公司書面許可，不可部份複製。

This document is issued by the Company subject to its General Conditions of Service printed overleaf, available on request or accessible at www.sgs.com/terms_and_conditions.htm and, for electronic format documents, subject to Terms and Conditions for Electronic Documents at www.sgs.com/en/Terms-and-Conditions/Terms-e-Document. Attention is drawn to the limitation of liability, indemnification and jurisdiction issues defined therein. Any holder of this document is advised that information contained hereon reflects the Company's findings at the time of its intervention only and within the limits of Client's instructions, if any. The Company's sole responsibility is to its Client and this document does not exonerate parties to a transaction from exercising all their rights and obligations under the transaction documents. This document cannot be reproduced except in full, without prior written approval of the Company. Any unauthorized alteration, forgery or falsification of the content or appearance of this document is unlawful and offenders may be prosecuted to the fullest extent of the law.



Gamma/C	162.5	165.0	167.5	170.0	172.5	175.0	177.5	180.0	182.5	185.0	187.5	190.0	192.5
0.0	4984.84	4984.84	4984.84	4984.84	4984.84	4984.84	4984.84	4984.84	4984.84	4984.84	4984.84	4984.84	4984.84
2.5	5012.76	5016.12	5019.40	5022.45	5025.04	5027.48	5030.23	5032.59	5033.77	5034.58	5035.72	5036.69	5037.10
5.0	4904.53	4910.73	4916.82	4922.69	4928.33	4933.47	4937.76	4941.48	4944.81	4947.67	4950.05	4951.92	4953.19
7.5	4662.68	4671.49	4679.95	4687.92	4695.36	4702.29	4708.95	4714.66	4718.61	4721.48	4723.61	4725.15	4726.34
10.0	4256.83	4267.35	4277.20	4286.56	4295.76	4304.13	4310.98	4316.66	4321.19	4324.83	4327.73	4330.25	4333.21
12.5	3737.18	3748.37	3759.22	3769.34	3778.17	3786.24	3794.01	3801.10	3807.34	3812.56	3816.47	3819.30	3821.13
15.0	3154.95	3165.20	3176.08	3186.53	3195.84	3204.04	3210.52	3216.44	3223.31	3229.46	3233.36	3236.15	3238.78
17.5	2566.00	2576.36	2585.96	2595.07	2604.13	2612.48	2619.44	2625.55	2631.13	2636.07	2640.11	2643.95	2648.79
20.0	1985.93	1995.57	2004.76	2013.06	2019.80	2025.87	2032.03	2038.02	2044.05	2049.49	2053.64	2057.00	2060.07
22.5	1423.20	1431.59	1438.52	1444.98	1451.99	1458.22	1462.12	1465.38	1469.58	1473.57	1476.72	1479.08	1480.34
25.0	898.99	904.26	909.64	914.47	917.91	920.99	924.83	928.41	930.80	932.81	935.23	937.08	937.39
27.5	520.61	520.31	522.71	526.04	529.24	531.81	531.89	532.44	537.39	542.10	542.09	540.86	540.41
30.0	348.25	349.66	350.42	351.28	353.17	354.92	355.14	355.31	357.00	358.59	358.43	358.12	359.19
32.5	244.90	245.67	246.18	246.64	247.18	247.75	248.32	248.85	249.26	249.60	249.92	250.23	250.60
35.0	171.88	172.22	172.38	172.53	172.80	173.08	173.27	173.46	173.76	174.04	174.24	174.35	174.31
37.5	122.12	122.01	122.12	122.25	122.28	122.26	122.12	122.01	122.08	122.14	122.03	121.81	121.47
40.0	88.92	88.72	88.61	88.51	88.34	88.12	87.79	87.45	87.21	86.96	86.64	86.26	85.79
42.5	66.31	66.05	65.77	65.47	65.18	64.85	64.46	64.04	63.63	63.19	62.71	62.20	61.68
45.0	50.69	50.54	50.30	50.01	49.68	49.30	48.80	48.30	47.89	47.50	47.06	46.56	45.89
47.5	39.18	38.86	38.55	38.23	37.91	37.56	37.15	36.71	36.26	35.80	35.33	34.85	34.37
50.0	31.00	30.68	30.37	30.06	29.73	29.38	29.00	28.61	28.25	27.87	27.44	27.01	26.62
52.5	24.98	24.69	24.38	24.06	23.75	23.44	23.12	22.79	22.44	22.10	21.76	21.44	21.14
55.0	20.40	20.14	19.87	19.58	19.30	19.01	18.73	18.44	18.16	17.90	17.64	17.41	17.18
57.5	16.89	16.65	16.41	16.17	15.94	15.71	15.47	15.22	15.00	14.80	14.61	14.44	14.28
60.0	14.20	14.01	13.81	13.61	13.43	13.24	13.04	12.84	12.65	12.48	12.34	12.21	12.10
62.5	12.15	12.00	11.85	11.69	11.53	11.38	11.21	11.05	10.89	10.74	10.62	10.52	10.43
65.0	10.10	9.99	9.88	9.78	9.66	9.53	9.40	9.27	9.14	9.01	8.90	8.80	8.72
67.5	8.03	7.95	7.87	7.79	7.70	7.61	7.51	7.41	7.30	7.19	7.08	6.98	6.90
70.0	6.07	6.05	6.02	5.98	5.93	5.88	5.82	5.74	5.65	5.55	5.46	5.39	5.31
72.5	4.32	4.35	4.38	4.40	4.41	4.41	4.37	4.32	4.26	4.19	4.12	4.06	4.01
75.0	2.94	3.01	3.09	3.16	3.22	3.25	3.26	3.26	3.22	3.17	3.12	3.09	3.06
77.5	0.83	0.85	0.86	0.87	0.88	0.89	0.86	0.83	0.85	0.88	0.86	0.85	0.85
80.0	0.57	0.57	0.57	0.57	0.57	0.57	0.57	0.57	0.57	0.56	0.56	0.56	0.56
82.5	0.38	0.37	0.37	0.37	0.37	0.37	0.37	0.37	0.37	0.37	0.37	0.37	0.37
85.0	0.39	0.33	0.31	0.29	0.29	0.29	0.30	0.31	0.34	0.37	0.37	0.37	0.37
87.5	0.05	0.05	0.05	0.05	0.05	0.05	0.05	0.05	0.05	0.05	0.05	0.05	0.05
90.0	0.02	0.02	0.03	0.03	0.03	0.04	0.03	0.02	0.02	0.02	0.02	0.02	0.02
92.5	0.02	0.02	0.02	0.02	0.03	0.03	0.03	0.02	0.02	0.02	0.02	0.02	0.02
95.0	0.02	0.02	0.02	0.02	0.02	0.03	0.02	0.02	0.02	0.02	0.02	0.02	0.02
97.5	0.02	0.02	0.02	0.02	0.02	0.02	0.02	0.02	0.02	0.02	0.02	0.02	0.02
100.0	0.02	0.02	0.02	0.02	0.02	0.02	0.02	0.02	0.02	0.02	0.02	0.02	0.02
102.5	0.02	0.02	0.02	0.02	0.01	0.01	0.01	0.01	0.02	0.02	0.02	0.02	0.02
105.0	0.03	0.04	0.03	0.01	0.01	0.01	0.01	0.01	0.01	0.02	0.01	0.01	0.01
107.5	0.01	0.01	0.01	0.01	0.01	0.01	0.01	0.01	0.02	0.02	0.01	0.01	0.04
110.0	0.01	0.01	0.01	0.01	0.01	0.01	0.01	0.01	0.03	0.04	0.03	0.02	0.02
112.5	0.01	0.01	0.01	0.01	0.01	0.01	0.03	0.05	0.03	0.01	0.01	0.02	0.07
115.0	0.10	0.11	0.11	0.10	0.11	0.11	0.06	0.00	0.00	0.00	0.02	0.03	0.02
117.5	0.01	0.01	0.01	0.01	0.01	0.01	0.01	0.01	0.01	0.01	0.01	0.01	0.01
120.0	0.01	0.01	0.01	0.01	0.01	0.01	0.01	0.01	0.01	0.01	0.01	0.01	0.01
122.5	0.01	0.01	0.01	0.01	0.01	0.01	0.01	0.01	0.01	0.01	0.01	0.01	0.01
125.0	0.01	0.01	0.01	0.01	0.01	0.01	0.01	0.01	0.01	0.01	0.01	0.01	0.01
127.5	0.01	0.01	0.01	0.01	0.01	0.01	0.01	0.01	0.01	0.01	0.01	0.01	0.01
130.0	0.01	0.01	0.01	0.01	0.01	0.01	0.01	0.01	0.01	0.01	0.01	0.01	0.01
132.5	0.01	0.01	0.01	0.01	0.01	0.01	0.01	0.01	0.01	0.01	0.01	0.01	0.01
135.0	0.01	0.01	0.01	0.01	0.01	0.01	0.01	0.01	0.01	0.01	0.01	0.01	0.01
137.5	0.01	0.01	0.01	0.01	0.01	0.01	0.01	0.01	0.01	0.01	0.01	0.01	0.01
140.0	0.01	0.01	0.01	0.01	0.01	0.01	0.01	0.01	0.01	0.01	0.01	0.01	0.01
142.5	0.01	0.01	0.01	0.01	0.01	0.01	0.01	0.01	0.01	0.01	0.01	0.01	0.01
145.0	0.01	0.01	0.01	0.01	0.01	0.01	0.01	0.01	0.01	0.01	0.01	0.01	0.01
147.5	0.01	0.01	0.01	0.01	0.01	0.01	0.01	0.01	0.01	0.01	0.01	0.01	0.01
150.0	0.01	0.01	0.01	0.01	0.01	0.01	0.01	0.01	0.01	0.01	0.01	0.01	0.01
152.5	0.01	0.01	0.01	0.01	0.01	0.01	0.01	0.01	0.01	0.01	0.01	0.01	0.01
155.0	0.01	0.01	0.01	0.01	0.01	0.01	0.01	0.01	0.01	0.01	0.01	0.01	0.01
157.5	0.01	0.01	0.01	0.01	0.01	0.01	0.01	0.01	0.01	0.01	0.01	0.01	0.01
160.0	0.01	0.01	0.01	0.01	0.01	0.01	0.01	0.01	0.01	0.01	0.01	0.01	0.01
162.5	0.01	0.01	0.01	0.01	0.01	0.01	0.01	0.01	0.01	0.01	0.01	0.01	0.01
165.0	0.01	0.01	0.01	0.01	0.01	0.01	0.01	0.01	0.01	0.01	0.01	0.01	0.01
167.5	0.01	0.01	0.01	0.01	0.01	0.01	0.01	0.01	0.01	0.01	0.01	0.01	0.01
170.0	0.01	0.01	0.01	0.01	0.01	0.01	0.01	0.01	0.01	0.01	0.01	0.01	0.01
172.5	0.01	0.01	0.01	0.01	0.01	0.01	0.01	0.01	0.01	0.01	0.01	0.01	0.01
175.0	0.01	0.01	0.01	0.01	0.01	0.01	0.01	0.01	0.01	0.01	0.01	0.01	0.01
177.5	0.01	0.01	0.01	0.01	0.01	0.01	0.01	0.01	0.01	0.01	0.01	0.01	0.01
180.0	0.01	0.01	0.01	0.01	0.01	0.01	0.01	0.01	0.01	0.01	0.01	0.01	0.01

UNIT: cd

Unless otherwise stated the results shown in this test report refer only to the sample(s) tested. This test report cannot be reproduced, except in full, without prior written permission of the Company. 除非另有說明，此報告結果僅對測試之樣品負責。本報告未經本公司書面許可，不可部份複製。

This document is issued by the Company subject to its General Conditions of Service printed overleaf, available on request or accessible at www.sgs.com/terms_and_conditions.htm and, for electronic format documents, subject to Terms and Conditions for Electronic Documents at www.sgs.com/en/Terms-and-Conditions/Terms-e-Document. Attention is drawn to the limitation of liability, indemnification and jurisdiction issues defined therein. Any holder of this document is advised that information contained hereon reflects the Company's findings at the time of its intervention only and within the limits of Client's instructions, if any. The Company's sole responsibility is to its Client and this document does not exonerate parties to a transaction from exercising all their rights and obligations under the transaction documents. This document cannot be reproduced except in full, without prior written approval of the Company. Any unauthorized alteration, forgery or falsification of the content or appearance of this document is unlawful and offenders may be prosecuted to the fullest extent of the law.

Gamma/C	195.0	197.5	200.0	202.5	205.0	207.5	210.0	212.5	215.0	217.5	220.0	222.5	225.0
0.0	4984.84	4984.84	4984.84	4984.84	4984.84	4984.84	4984.84	4984.84	4984.84	4984.84	4984.84	4984.84	4984.84
2.5	5037.25	5037.29	5037.18	5037.00	5036.55	5035.57	5034.43	5033.60	5032.49	5030.55	5028.15	5025.40	5022.51
5.0	4953.94	4954.18	4954.06	4953.86	4953.19	4951.68	4949.54	4946.82	4943.56	4939.80	4935.66	4931.46	4926.75
7.5	4727.17	4727.97	4727.95	4726.05	4723.48	4721.45	4718.92	4715.06	4710.41	4705.35	4699.64	4693.12	4685.94
10.0	4335.35	4335.31	4334.25	4333.00	4331.26	4329.21	4326.18	4321.26	4315.42	4309.50	4302.93	4295.43	4287.03
12.5	3822.17	3822.66	3822.58	3822.17	3820.98	3818.75	3815.23	3809.66	3803.30	3797.59	3791.09	3782.46	3772.81
15.0	3240.36	3239.89	3238.69	3238.05	3237.05	3235.18	3232.45	3228.75	3223.84	3217.24	3209.58	3201.30	3192.49
17.5	2652.79	2653.96	2653.90	2653.74	2652.97	2651.53	2649.20	2645.58	2641.21	2636.85	2631.51	2623.96	2615.65
20.0	2062.10	2062.10	2061.20	2060.48	2059.13	2056.57	2053.30	2049.80	2045.65	2040.42	2034.54	2028.21	2021.61
22.5	1480.88	1481.01	1480.60	1479.59	1478.01	1475.94	1473.11	1469.10	1464.46	1459.75	1454.53	1448.40	1441.81
25.0	936.95	936.26	935.31	934.36	933.07	931.17	928.67	925.58	921.66	916.23	910.57	906.05	901.80
27.5	540.68	543.06	545.11	544.34	542.29	539.34	536.43	535.26	533.96	530.56	527.09	525.45	524.10
30.0	360.20	359.91	359.29	359.03	358.79	358.54	358.05	357.03	355.69	354.00	352.31	351.01	349.85
32.5	250.89	250.98	250.88	250.50	249.95	249.33	248.61	247.76	246.82	245.82	244.83	244.02	243.23
35.0	174.19	174.10	173.87	173.30	172.58	171.84	171.06	170.22	169.41	168.72	168.11	167.55	167.04
37.5	121.06	120.69	120.24	119.58	118.88	118.28	117.70	117.12	116.58	116.09	115.61	115.08	114.62
40.0	85.26	84.72	84.15	83.55	82.95	82.35	81.80	81.37	81.00	80.66	80.36	80.13	79.91
42.5	61.14	60.55	59.98	59.49	59.05	58.65	58.28	57.94	57.64	57.40	57.19	56.97	56.76
45.0	45.18	44.42	43.81	43.63	43.55	43.31	43.02	42.60	42.21	42.04	41.93	41.80	41.66
47.5	33.92	33.50	33.11	32.76	32.45	32.19	31.98	31.82	31.70	31.60	31.51	31.40	31.30
50.0	26.26	25.91	25.60	25.34	25.12	24.96	24.84	24.75	24.66	24.57	24.49	24.42	24.36
52.5	20.86	20.62	20.41	20.23	20.09	19.98	19.90	19.82	19.76	19.70	19.65	19.61	19.56
55.0	16.98	16.81	16.66	16.55	16.47	16.42	16.38	16.34	16.30	16.27	16.25	16.23	16.21
57.5	14.14	14.03	13.95	13.88	13.83	13.79	13.77	13.75	13.73	13.72	13.71	13.69	13.67
60.0	12.01	11.93	11.86	11.82	11.78	11.76	11.74	11.72	11.71	11.70	11.70	11.70	11.70
62.5	10.36	10.30	10.25	10.20	10.17	10.15	10.13	10.12	10.11	10.11	10.10	10.10	10.10
65.0	8.65	8.60	8.56	8.52	8.50	8.47	8.45	8.44	8.44	8.43	8.43	8.44	8.45
67.5	6.84	6.79	6.75	6.73	6.72	6.71	6.69	6.69	6.70	6.71	6.71	6.73	6.75
70.0	5.24	5.21	5.19	5.18	5.18	5.18	5.18	5.19	5.21	5.23	5.26	5.29	5.32
72.5	3.97	3.95	3.93	3.93	3.94	3.95	3.97	4.00	4.04	4.08	4.12	4.16	4.20
75.0	3.04	3.02	3.01	3.02	3.03	3.06	3.08	3.11	3.14	3.18	3.22	3.26	3.30
77.5	0.85	0.84	0.82	0.82	0.83	0.83	0.83	0.82	0.81	0.80	0.78	0.78	0.79
80.0	0.56	0.56	0.56	0.56	0.56	0.56	0.56	0.56	0.56	0.56	0.56	0.56	0.55
82.5	0.37	0.36	0.36	0.36	0.36	0.35	0.35	0.35	0.35	0.34	0.34	0.34	0.34
85.0	0.38	0.40	0.42	0.42	0.40	0.38	0.35	0.33	0.32	0.30	0.30	0.30	0.33
87.5	0.05	0.05	0.05	0.05	0.05	0.05	0.05	0.05	0.05	0.05	0.05	0.04	0.04
90.0	0.03	0.03	0.04	0.03	0.02	0.02	0.02	0.02	0.02	0.03	0.03	0.03	0.02
92.5	0.03	0.03	0.03	0.02	0.02	0.02	0.02	0.02	0.02	0.02	0.03	0.02	0.02
95.0	0.02	0.02	0.02	0.02	0.02	0.02	0.02	0.02	0.02	0.02	0.02	0.02	0.02
97.5	0.02	0.02	0.02	0.02	0.02	0.02	0.02	0.02	0.02	0.02	0.02	0.02	0.02
100.0	0.02	0.02	0.02	0.02	0.02	0.02	0.02	0.02	0.02	0.01	0.01	0.01	0.02
102.5	0.02	0.02	0.02	0.02	0.02	0.02	0.02	0.01	0.01	0.01	0.01	0.01	0.01
105.0	0.02	0.02	0.02	0.01	0.01	0.02	0.02	0.02	0.01	0.01	0.01	0.01	0.01
107.5	0.06	0.04	0.01	0.00	0.01	0.02	0.02	0.02	0.01	0.00	0.00	0.00	0.00
110.0	0.03	0.02	0.02	0.06	0.10	0.07	0.03	0.01	0.01	0.07	0.11	0.07	0.01
112.5	0.11	0.10	0.09	0.07	0.07	0.08	0.09	0.09	0.09	0.08	0.06	0.04	0.03
115.0	0.02	0.05	0.09	0.10	0.09	0.06	0.02	0.01	0.02	0.01	0.01	0.05	0.10
117.5	0.01	0.01	0.01	0.01	0.01	0.01	0.01	0.01	0.01	0.01	0.01	0.01	0.01
120.0	0.01	0.01	0.01	0.01	0.01	0.01	0.01	0.01	0.01	0.01	0.01	0.01	0.01
122.5	0.01	0.01	0.01	0.01	0.01	0.01	0.01	0.01	0.01	0.01	0.01	0.01	0.01
125.0	0.01	0.01	0.01	0.01	0.01	0.01	0.01	0.01	0.01	0.01	0.01	0.01	0.01
127.5	0.01	0.01	0.01	0.01	0.01	0.01	0.01	0.01	0.01	0.01	0.01	0.01	0.01
130.0	0.01	0.01	0.01	0.01	0.01	0.01	0.01	0.01	0.01	0.01	0.01	0.01	0.01
132.5	0.01	0.01	0.01	0.01	0.01	0.01	0.01	0.01	0.01	0.01	0.01	0.01	0.01
135.0	0.01	0.01	0.01	0.01	0.01	0.01	0.01	0.01	0.01	0.01	0.01	0.01	0.01
137.5	0.01	0.01	0.01	0.01	0.01	0.01	0.01	0.01	0.01	0.01	0.01	0.01	0.01
140.0	0.01	0.01	0.01	0.01	0.01	0.01	0.01	0.01	0.01	0.01	0.01	0.01	0.01
142.5	0.01	0.01	0.01	0.01	0.01	0.01	0.01	0.01	0.01	0.01	0.01	0.01	0.01
145.0	0.01	0.01	0.01	0.01	0.01	0.01	0.01	0.01	0.01	0.01	0.01	0.01	0.01
147.5	0.01	0.01	0.01	0.01	0.01	0.01	0.01	0.01	0.01	0.01	0.01	0.01	0.01
150.0	0.01	0.01	0.01	0.01	0.01	0.01	0.01	0.01	0.01	0.01	0.01	0.01	0.01
152.5	0.01	0.01	0.01	0.01	0.01	0.01	0.01	0.01	0.01	0.01	0.01	0.01	0.01
155.0	0.01	0.01	0.01	0.01	0.01	0.01	0.01	0.01	0.01	0.01	0.01	0.01	0.01
157.5	0.01	0.01	0.01	0.01	0.01	0.01	0.01	0.01	0.01	0.01	0.01	0.01	0.01
160.0	0.01	0.01	0.01	0.01	0.01	0.01	0.01	0.01	0.01	0.01	0.01	0.01	0.01
162.5	0.01	0.01	0.01	0.01	0.01	0.01	0.01	0.01	0.01	0.01	0.01	0.01	0.01
165.0	0.01	0.01	0.01	0.01	0.01	0.01	0.01	0.01	0.01	0.01	0.01	0.01	0.01
167.5	0.01	0.01	0.01	0.01	0.01	0.01	0.01	0.01	0.01	0.01	0.01	0.01	0.01
170.0	0.01	0.01	0.01	0.01	0.01	0.01	0.01	0.01	0.01	0.01	0.01	0.01	0.01
172.5	0.01	0.01	0.01	0.01	0.01	0.01	0.01	0.01	0.01	0.01	0.01	0.01	0.01
175.0	0.01	0.01	0.01	0.01	0.01	0.01	0.01	0.01	0.01	0.01	0.01	0.01	0.01
177.5	0.01	0.01	0.01	0.01	0.01	0.01	0.01	0.01	0.01	0.01	0.01	0.01	0.01
180.0	0.01	0.01	0.01	0.01	0.01	0.01	0.01	0.01	0.01	0.01	0.01	0.01	0.01

UNIT: cd

Unless otherwise stated the results shown in this test report refer only to the sample(s) tested. This test report cannot be reproduced, except in full, without prior written permission of the Company. 除非另有說明，此報告結果僅對測試之樣品負責。本報告未經本公司書面許可，不可部份複製。

This document is issued by the Company subject to its General Conditions of Service printed overleaf, available on request or accessible at www.sgs.com/terms_and_conditions.htm and, for electronic format documents, subject to Terms and Conditions for Electronic Documents at www.sgs.com/en/Terms-and-Conditions/Terms-e-Document. Attention is drawn to the limitation of liability, indemnification and jurisdiction issues defined therein. Any holder of this document is advised that information contained hereon reflects the Company's findings at the time of its intervention only and within the limits of Client's instructions, if any. The Company's sole responsibility is to its Client and this document does not exonerate parties to a transaction from exercising all their rights and obligations under the transaction documents. This document cannot be reproduced except in full, without prior written approval of the Company. Any unauthorized alteration, forgery or falsification of the content or appearance of this document is unlawful and offenders may be prosecuted to the fullest extent of the law.



Gamma/C	227.5	230.0	232.5	235.0	237.5	240.0	242.5	245.0	247.5	250.0	252.5	255.0	257.5
0.0	4984.84	4984.84	4984.84	4984.84	4984.84	4984.84	4984.84	4984.84	4984.84	4984.84	4984.84	4984.84	4984.84
2.5	5019.86	5017.13	5014.18	5010.88	5006.94	5002.78	4998.79	4994.72	4990.33	4985.89	4981.44	4977.38	4974.04
5.0	4920.92	4914.74	4908.98	4903.04	4896.54	4889.50	4881.75	4873.39	4864.25	4855.00	4846.40	4838.10	4829.87
7.5	4678.18	4669.83	4660.79	4651.33	4641.92	4631.81	4620.18	4607.70	4594.53	4581.42	4569.46	4557.77	4545.04
10.0	4277.48	4267.26	4256.87	4245.98	4234.45	4222.25	4209.47	4195.59	4179.48	4163.05	4148.43	4133.83	4117.10
12.5	3763.02	3752.41	3740.18	3727.48	3715.62	3703.29	3689.73	3674.62	3656.50	3638.04	3622.12	3606.62	3589.71
15.0	3183.73	3174.00	3162.10	3149.17	3135.68	3122.37	3111.05	3099.09	3083.36	3067.21	3053.94	3040.53	3023.92
17.5	2607.83	2599.85	2591.51	2582.59	2572.88	2562.20	2550.42	2537.26	2521.70	2505.77	2491.61	2477.78	2463.23
20.0	2015.20	2008.37	2000.68	1992.07	1982.28	1971.55	1960.17	1947.79	1933.59	1919.29	1906.94	1894.79	1881.11
22.5	1435.17	1428.22	1420.97	1413.08	1404.08	1394.46	1384.78	1374.29	1361.80	1349.25	1338.95	1328.51	1315.49
25.0	897.59	892.98	887.48	881.06	873.12	864.94	858.08	851.10	842.78	834.10	825.87	817.42	807.94
27.5	521.72	519.57	518.75	518.40	518.46	517.61	514.27	509.13	500.69	494.01	496.76	499.55	492.64
30.0	348.68	347.50	346.28	344.93	343.27	341.50	339.94	338.03	334.99	331.74	329.14	326.58	323.67
32.5	242.28	241.32	240.52	239.69	238.69	237.62	236.61	235.35	233.40	231.33	229.72	228.14	226.29
35.0	166.60	166.19	165.78	165.37	164.98	164.56	164.09	163.43	162.27	161.07	160.35	159.69	158.81
37.5	114.42	114.31	114.18	114.04	113.92	113.75	113.46	113.07	112.51	111.97	111.63	111.38	111.20
40.0	79.64	79.39	79.26	79.18	79.06	78.95	78.89	78.78	78.47	78.19	78.16	78.26	78.44
42.5	56.57	56.41	56.32	56.24	56.12	56.01	55.99	55.98	55.84	55.77	56.02	56.37	56.67
45.0	41.50	41.36	41.28	41.23	41.15	41.08	41.06	41.03	40.92	40.84	40.88	41.02	41.27
47.5	31.21	31.13	31.05	30.98	30.92	30.87	30.84	30.80	30.70	30.63	30.69	30.83	31.07
50.0	24.30	24.25	24.19	24.14	24.08	24.02	23.98	23.93	23.82	23.73	23.75	23.84	24.00
52.5	19.52	19.48	19.44	19.41	19.36	19.31	19.26	19.18	19.05	18.94	18.93	18.98	19.07
55.0	16.18	16.15	16.10	16.06	16.01	15.96	15.91	15.83	15.70	15.59	15.55	15.56	15.58
57.5	13.66	13.64	13.63	13.61	13.57	13.52	13.46	13.39	13.26	13.15	13.10	13.10	13.11
60.0	11.69	11.69	11.69	11.68	11.66	11.63	11.59	11.53	11.42	11.32	11.29	11.28	11.28
62.5	10.10	10.10	10.11	10.12	10.11	10.08	10.05	9.99	9.88	9.77	9.72	9.71	9.70
65.0	8.45	8.46	8.47	8.48	8.47	8.45	8.42	8.37	8.26	8.15	8.09	8.05	8.02
67.5	6.77	6.79	6.81	6.82	6.83	6.82	6.80	6.75	6.66	6.56	6.49	6.44	6.39
70.0	5.36	5.39	5.42	5.44	5.46	5.46	5.43	5.38	5.29	5.19	5.12	5.04	4.97
72.5	4.24	4.28	4.32	4.35	4.36	4.36	4.34	4.29	4.20	4.09	4.01	3.92	3.84
75.0	3.35	3.39	3.42	3.45	3.46	3.46	3.44	3.40	3.30	3.19	3.09	2.99	2.87
77.5	0.78	0.78	0.77	0.76	0.75	0.75	0.74	0.74	0.73	0.72	0.71	0.71	0.71
80.0	0.55	0.55	0.54	0.54	0.53	0.53	0.53	0.53	0.52	0.52	0.51	0.51	0.52
82.5	0.34	0.33	0.33	0.33	0.33	0.32	0.32	0.32	0.32	0.31	0.31	0.31	0.31
85.0	0.36	0.41	0.49	0.58	0.66	0.74	0.87	0.93	0.79	0.59	0.47	0.37	0.31
87.5	0.04	0.04	0.04	0.04	0.04	0.04	0.04	0.04	0.04	0.03	0.03	0.03	0.03
90.0	0.02	0.02	0.02	0.02	0.03	0.03	0.03	0.03	0.03	0.02	0.02	0.02	0.02
92.5	0.02	0.02	0.03	0.03	0.02	0.01	0.01	0.02	0.02	0.02	0.02	0.02	0.02
95.0	0.02	0.02	0.02	0.02	0.02	0.02	0.02	0.02	0.02	0.02	0.02	0.02	0.02
97.5	0.02	0.02	0.02	0.02	0.02	0.02	0.02	0.02	0.02	0.02	0.02	0.02	0.02
100.0	0.02	0.02	0.02	0.02	0.02	0.02	0.02	0.02	0.02	0.02	0.02	0.02	0.02
102.5	0.02	0.02	0.02	0.02	0.02	0.02	0.02	0.02	0.02	0.02	0.02	0.02	0.02
105.0	0.02	0.02	0.02	0.02	0.01	0.01	0.01	0.02	0.01	0.01	0.01	0.01	0.01
107.5	0.01	0.01	0.01	0.02	0.01	0.01	0.01	0.01	0.01	0.01	0.01	0.01	0.01
110.0	0.00	0.01	0.02	0.02	0.02	0.01	0.02	0.02	0.02	0.01	0.01	0.01	0.01
112.5	0.03	0.04	0.04	0.04	0.02	0.01	0.04	0.07	0.04	0.01	0.01	0.03	0.05
115.0	0.10	0.10	0.10	0.09	0.07	0.05	0.06	0.08	0.10	0.10	0.07	0.03	0.04
117.5	0.01	0.01	0.01	0.01	0.01	0.01	0.01	0.01	0.01	0.01	0.01	0.01	0.01
120.0	0.01	0.01	0.01	0.01	0.01	0.01	0.01	0.01	0.01	0.01	0.01	0.01	0.01
122.5	0.01	0.01	0.01	0.01	0.01	0.01	0.01	0.01	0.01	0.01	0.01	0.01	0.01
125.0	0.01	0.01	0.01	0.01	0.01	0.01	0.01	0.01	0.01	0.01	0.01	0.01	0.01
127.5	0.01	0.01	0.01	0.01	0.01	0.01	0.01	0.01	0.01	0.01	0.01	0.01	0.01
130.0	0.01	0.01	0.01	0.01	0.01	0.01	0.01	0.01	0.01	0.01	0.01	0.01	0.01
132.5	0.01	0.01	0.01	0.01	0.01	0.01	0.01	0.01	0.01	0.01	0.01	0.01	0.01
135.0	0.01	0.01	0.01	0.01	0.01	0.01	0.01	0.01	0.01	0.01	0.01	0.01	0.01
137.5	0.01	0.01	0.01	0.01	0.01	0.01	0.01	0.01	0.01	0.01	0.01	0.01	0.01
140.0	0.01	0.01	0.01	0.01	0.01	0.01	0.01	0.01	0.01	0.01	0.01	0.01	0.01
142.5	0.01	0.01	0.01	0.01	0.01	0.01	0.01	0.01	0.01	0.01	0.01	0.01	0.01
145.0	0.01	0.01	0.01	0.01	0.01	0.01	0.01	0.01	0.01	0.01	0.01	0.01	0.01
147.5	0.01	0.01	0.01	0.01	0.01	0.01	0.01	0.01	0.01	0.01	0.01	0.01	0.01
150.0	0.01	0.01	0.01	0.01	0.01	0.01	0.01	0.01	0.01	0.01	0.01	0.01	0.01
152.5	0.01	0.01	0.01	0.01	0.01	0.01	0.01	0.01	0.01	0.01	0.01	0.01	0.01
155.0	0.01	0.01	0.01	0.01	0.01	0.01	0.01	0.01	0.01	0.01	0.01	0.01	0.01
157.5	0.01	0.01	0.01	0.01	0.01	0.01	0.01	0.01	0.01	0.01	0.01	0.01	0.01
160.0	0.01	0.01	0.01	0.01	0.01	0.01	0.01	0.01	0.01	0.01	0.01	0.01	0.01
162.5	0.01	0.01	0.01	0.01	0.01	0.01	0.01	0.01	0.01	0.01	0.01	0.01	0.01
165.0	0.01	0.01	0.01	0.01	0.01	0.01	0.01	0.01	0.01	0.01	0.01	0.01	0.01
167.5	0.01	0.01	0.01	0.01	0.01	0.01	0.01	0.01	0.01	0.01	0.01	0.01	0.01
170.0	0.01	0.01	0.01	0.01	0.01	0.01	0.01	0.01	0.01	0.01	0.01	0.01	0.01
172.5	0.01	0.01	0.01	0.01	0.01	0.01	0.01	0.01	0.01	0.01	0.01	0.01	0.01
175.0	0.01	0.01	0.01	0.01	0.01	0.01	0.01	0.01	0.01	0.01	0.01	0.01	0.01
177.5	0.01	0.01	0.01	0.01	0.01	0.01	0.01	0.01	0.01	0.01	0.01	0.01	0.01
180.0	0.01	0.01	0.01	0.01	0.01	0.01	0.01	0.01	0.01	0.01	0.01	0.01	0.01

UNIT: cd

Unless otherwise stated the results shown in this test report refer only to the sample(s) tested. This test report cannot be reproduced, except in full, without prior written permission of the Company. 除非另有說明，此報告結果僅對測試之樣品負責。本報告未經本公司書面許可，不可部份複製。

This document is issued by the Company subject to its General Conditions of Service printed overleaf, available on request or accessible at www.sgs.com/terms_and_conditions.htm and, for electronic format documents, subject to Terms and Conditions for Electronic Documents at www.sgs.com/en/Terms-and-Conditions/Terms-e-Document. Attention is drawn to the limitation of liability, indemnification and jurisdiction issues defined therein. Any holder of this document is advised that information contained hereon reflects the Company's findings at the time of its intervention only and within the limits of Client's instructions, if any. The Company's sole responsibility is to its Client and this document does not exonerate parties to a transaction from exercising all their rights and obligations under the transaction documents. This document cannot be reproduced except in full, without prior written approval of the Company. Any unauthorized alteration, forgery or falsification of the content or appearance of this document is unlawful and offenders may be prosecuted to the fullest extent of the law.

Gamma/C	260.0	262.5	265.0	267.5	270.0	272.5	275.0	277.5	280.0	282.5	285.0	287.5	290.0
0.0	4984.84	4984.84	4984.84	4984.84	4984.84	4984.84	4984.84	4984.84	4984.84	4984.84	4984.84	4984.84	4984.84
2.5	4971.75	4971.34	4971.72	4972.77	4972.42	4967.52	4961.20	4955.87	4950.54	4944.94	4939.30	4933.76	4928.32
5.0	4822.20	4814.11	4809.83	4817.57	4824.41	4816.81	4804.83	4794.66	4784.31	4773.75	4763.20	4752.85	4742.70
7.5	4533.54	4523.59	4519.74	4533.03	4544.37	4533.22	4515.05	4499.35	4483.54	4468.19	4453.29	4439.22	4425.35
10.0	4101.37	4086.57	4080.29	4098.93	4116.11	4104.19	4083.44	4066.15	4048.71	4031.67	4014.87	3998.50	3982.08
12.5	3573.37	3554.91	3546.39	3570.02	3592.60	3580.04	3557.14	3539.09	3520.66	3501.40	3482.16	3463.82	3445.77
15.0	3007.62	2990.95	2983.56	3004.71	3024.93	3013.94	2993.49	2976.42	2959.12	2942.71	2925.91	2907.28	2888.36
17.5	2448.90	2430.45	2422.73	2451.53	2479.76	2470.07	2448.94	2431.82	2414.42	2397.73	2381.44	2365.52	2350.23
20.0	1867.93	1852.65	1847.36	1874.46	1900.48	1891.23	1871.39	1855.61	1839.82	1824.87	1810.66	1797.88	1785.12
22.5	1302.30	1286.04	1280.23	1309.24	1337.73	1329.96	1311.60	1297.83	1284.39	1272.27	1260.86	1250.09	1239.32
25.0	798.57	787.12	782.76	801.89	820.66	814.94	801.98	791.97	781.98	772.71	763.49	753.70	743.95
27.5	484.60	482.30	481.00	478.01	474.11	468.90	463.11	457.38	451.52	445.60	439.56	433.17	426.94
30.0	320.50	315.86	313.23	318.31	323.22	320.10	314.70	310.60	306.52	302.29	298.14	294.30	290.57
32.5	224.32	221.66	220.23	223.31	226.23	224.24	220.78	217.88	214.98	212.18	209.46	206.84	204.28
35.0	157.84	156.43	155.82	158.18	160.42	159.48	157.51	155.66	153.85	152.53	151.22	149.46	147.61
37.5	111.00	110.34	110.30	112.62	114.85	114.55	113.42	112.43	111.35	110.25	109.13	108.04	106.96
40.0	78.64	78.61	78.96	80.79	82.52	82.58	82.10	81.78	81.39	80.93	80.42	79.90	79.34
42.5	56.97	57.20	57.64	58.85	60.01	60.33	60.35	60.38	60.34	60.22	60.05	59.88	59.69
45.0	41.59	41.83	42.27	43.32	44.37	44.79	45.00	45.22	45.37	45.45	45.49	45.49	45.47
47.5	31.36	31.57	31.92	32.73	33.54	33.90	34.11	34.34	34.53	34.67	34.79	34.92	35.04
50.0	24.19	24.35	24.62	25.19	25.78	26.08	26.30	26.52	26.73	26.92	27.11	27.29	27.47
52.5	19.19	19.29	19.48	19.88	20.30	20.53	20.71	20.92	21.13	21.33	21.52	21.72	21.92
55.0	15.63	15.68	15.79	16.08	16.38	16.56	16.72	16.90	17.08	17.27	17.46	17.65	17.83
57.5	13.14	13.17	13.24	13.42	13.63	13.75	13.85	13.99	14.15	14.31	14.47	14.64	14.81
60.0	11.29	11.31	11.35	11.46	11.60	11.70	11.80	11.90	12.02	12.14	12.28	12.42	12.57
62.5	9.70	9.69	9.71	9.82	9.93	9.98	10.03	10.11	10.19	10.29	10.39	10.50	10.62
65.0	8.00	7.96	7.96	8.05	8.16	8.19	8.22	8.26	8.32	8.39	8.47	8.55	8.64
67.5	6.35	6.29	6.26	6.32	6.39	6.42	6.43	6.45	6.48	6.52	6.57	6.63	6.69
70.0	4.90	4.82	4.77	4.82	4.88	4.87	4.85	4.84	4.85	4.86	4.88	4.91	4.95
72.5	3.76	3.67	3.61	3.62	3.64	3.60	3.56	3.53	3.50	3.49	3.48	3.47	3.47
75.0	2.75	2.63	2.54	2.54	2.55	2.49	2.42	2.37	2.31	2.27	2.22	2.19	2.17
77.5	0.71	0.70	0.70	0.71	0.73	0.73	0.72	0.72	0.72	0.72	0.72	0.72	0.71
80.0	0.52	0.51	0.51	0.52	0.53	0.53	0.53	0.52	0.52	0.51	0.51	0.51	0.51
82.5	0.31	0.31	0.30	0.31	0.32	0.32	0.32	0.32	0.32	0.32	0.32	0.32	0.32
85.0	0.27	0.24	0.24	0.27	0.30	0.33	0.35	0.39	0.41	0.38	0.34	0.32	0.32
87.5	0.03	0.03	0.02	0.03	0.04	0.04	0.04	0.03	0.03	0.03	0.03	0.03	0.03
90.0	0.02	0.03	0.03	0.03	0.02	0.02	0.02	0.02	0.02	0.02	0.03	0.03	0.03
92.5	0.02	0.03	0.03	0.03	0.02	0.02	0.02	0.02	0.02	0.02	0.02	0.03	0.03
95.0	0.02	0.02	0.03	0.02	0.02	0.02	0.02	0.02	0.02	0.02	0.02	0.02	0.02
97.5	0.02	0.02	0.02	0.02	0.02	0.02	0.02	0.02	0.02	0.02	0.02	0.02	0.02
100.0	0.02	0.02	0.02	0.02	0.02	0.02	0.02	0.02	0.02	0.02	0.02	0.02	0.02
102.5	0.02	0.02	0.02	0.02	0.01	0.01	0.02	0.02	0.01	0.01	0.02	0.01	0.01
105.0	0.02	0.02	0.01	0.01	0.01	0.01	0.01	0.01	0.01	0.01	0.01	0.01	0.01
107.5	0.01	0.01	0.01	0.01	0.01	0.01	0.01	0.01	0.01	0.01	0.01	0.01	0.01
110.0	0.01	0.01	0.01	0.01	0.01	0.01	0.01	0.01	0.01	0.01	0.01	0.01	0.01
112.5	0.08	0.06	0.03	0.02	0.01	0.01	0.01	0.01	0.01	0.01	0.01	0.01	0.01
115.0	0.06	0.09	0.10	0.06	0.01	0.01	0.01	0.01	0.01	0.01	0.01	0.01	0.01
117.5	0.01	0.01	0.01	0.01	0.01	0.01	0.01	0.01	0.01	0.01	0.01	0.01	0.01
120.0	0.01	0.01	0.01	0.01	0.01	0.01	0.01	0.01	0.01	0.01	0.01	0.01	0.01
122.5	0.01	0.01	0.01	0.01	0.01	0.01	0.01	0.01	0.01	0.01	0.01	0.01	0.01
125.0	0.01	0.01	0.01	0.01	0.01	0.01	0.01	0.01	0.01	0.01	0.01	0.01	0.01
127.5	0.01	0.01	0.01	0.01	0.01	0.01	0.01	0.01	0.01	0.01	0.01	0.01	0.01
130.0	0.01	0.01	0.01	0.01	0.01	0.01	0.01	0.01	0.01	0.01	0.01	0.01	0.01
132.5	0.01	0.01	0.01	0.01	0.01	0.01	0.01	0.01	0.01	0.01	0.01	0.01	0.01
135.0	0.01	0.01	0.01	0.01	0.01	0.01	0.01	0.01	0.01	0.01	0.01	0.01	0.01
137.5	0.01	0.01	0.01	0.01	0.01	0.01	0.01	0.01	0.01	0.01	0.01	0.01	0.01
140.0	0.01	0.01	0.01	0.01	0.01	0.01	0.01	0.01	0.01	0.01	0.01	0.01	0.01
142.5	0.01	0.01	0.01	0.01	0.01	0.01	0.01	0.01	0.01	0.01	0.01	0.01	0.01
145.0	0.01	0.01	0.01	0.01	0.01	0.01	0.01	0.01	0.01	0.01	0.01	0.01	0.01
147.5	0.01	0.01	0.01	0.01	0.01	0.01	0.01	0.01	0.01	0.01	0.01	0.01	0.01
150.0	0.01	0.02	0.02	0.02	0.01	0.01	0.01	0.01	0.01	0.01	0.01	0.01	0.01
152.5	0.01	0.01	0.02	0.02	0.01	0.01	0.01	0.01	0.01	0.01	0.01	0.02	0.02
155.0	0.01	0.01	0.01	0.01	0.01	0.01	0.01	0.02	0.02	0.02	0.01	0.02	0.02
157.5	0.01	0.01	0.01	0.01	0.01	0.01	0.02	0.02	0.02	0.02	0.02	0.02	0.02
160.0	0.01	0.01	0.01	0.01	0.02	0.02	0.02	0.02	0.02	0.02	0.01	0.01	0.02
162.5	0.01	0.01	0.01	0.01	0.01	0.02	0.02	0.01	0.01	0.01	0.01	0.01	0.01
165.0	0.01	0.01	0.01	0.01	0.01	0.01	0.01	0.01	0.01	0.01	0.01	0.01	0.01
167.5	0.01	0.01	0.01	0.01	0.01	0.01	0.01	0.01	0.01	0.01	0.01	0.01	0.01
170.0	0.01	0.01	0.01	0.01	0.01	0.01	0.01	0.01	0.01	0.01	0.01	0.01	0.01
172.5	0.01	0.01	0.01	0.01	0.01	0.01	0.01	0.01	0.01	0.01	0.01	0.01	0.01
175.0	0.01	0.01	0.01	0.01	0.02	0.02	0.02	0.02	0.02	0.02	0.02	0.02	0.02
177.5	0.01	0.01	0.01	0.01	0.01	0.01	0.01	0.01	0.01	0.01	0.01	0.01	0.01
180.0	0.01	0.01	0.01	0.01	0.01	0.01	0.01	0.01	0.01	0.01	0.01	0.01	0.01

UNIT: cd

Unless otherwise stated the results shown in this test report refer only to the sample(s) tested. This test report cannot be reproduced, except in full, without prior written permission of the Company. 除非另有說明，此報告結果僅對測試之樣品負責。本報告未經本公司書面許可，不可部份複製。

This document is issued by the Company subject to its General Conditions of Service printed overleaf, available on request or accessible at www.sgs.com/terms_and_conditions.htm and, for electronic format documents, subject to Terms and Conditions for Electronic Documents at www.sgs.com/en/Terms-and-Conditions/Terms-e-Documents. Attention is drawn to the limitation of liability, indemnification and jurisdiction issues defined therein. Any holder of this document is advised that information contained hereon reflects the Company's findings at the time of its intervention only and within the limits of Client's instructions, if any. The Company's sole responsibility is to its Client and this document does not exonerate parties to a transaction from exercising all their rights and obligations under the transaction documents. This document cannot be reproduced except in full, without prior written approval of the Company. Any unauthorized alteration, forgery or falsification of the content or appearance of this document is unlawful and offenders may be prosecuted to the fullest extent of the law.

Gamma/C	292.5	295.0	297.5	300.0	302.5	305.0	307.5	310.0	312.5	315.0	317.5	320.0	322.5
0.0	4984.84	4984.84	4984.84	4984.84	4984.84	4984.84	4984.84	4984.84	4984.84	4984.84	4984.84	4984.84	4984.84
2.5	4923.07	4917.88	4912.59	4907.43	4902.69	4897.99	4892.95	4887.83	4882.74	4877.84	4873.40	4869.17	4864.98
5.0	4732.89	4723.22	4713.50	4703.86	4694.38	4684.91	4675.15	4665.59	4656.71	4648.17	4639.78	4631.61	4623.71
7.5	4410.90	4396.58	4383.01	4369.66	4356.08	4342.67	4329.71	4317.06	4304.58	4292.47	4280.98	4269.84	4258.85
10.0	3964.98	3947.83	3931.10	3914.63	3898.41	3882.47	3866.84	3851.54	3836.69	3822.14	3807.63	3793.58	3780.46
12.5	3427.60	3409.62	3392.15	3374.78	3356.97	3339.51	3323.27	3307.43	3291.18	3275.31	3260.62	3246.37	3231.90
15.0	2870.41	2852.83	2835.21	2818.18	2802.50	2787.33	2771.91	2756.73	2742.02	2727.77	2714.35	2700.91	2686.22
17.5	2336.32	2322.31	2306.39	2290.35	2275.91	2261.50	2245.69	2229.74	2214.41	2199.72	2186.17	2173.14	2159.96
20.0	1770.68	1756.07	1742.48	1729.20	1716.05	1702.76	1688.79	1674.87	1661.62	1648.83	1636.44	1624.52	1613.22
22.5	1228.03	1215.90	1201.66	1187.72	1176.83	1166.69	1155.56	1144.53	1134.40	1124.35	1113.93	1102.85	1089.84
25.0	734.89	725.74	715.54	705.44	696.53	687.99	679.24	670.70	662.82	654.99	646.41	638.00	630.58
27.5	421.45	416.28	411.22	406.17	400.78	395.51	390.81	386.34	381.85	377.60	373.91	370.45	366.93
30.0	286.85	283.13	279.27	275.60	272.53	269.63	266.53	263.51	260.75	258.11	255.50	252.99	250.66
32.5	201.71	199.20	196.79	194.51	192.40	190.38	188.35	186.38	184.51	182.76	181.18	179.70	178.24
35.0	145.81	144.18	143.03	141.95	140.53	139.07	137.76	136.53	135.39	134.34	133.39	132.50	131.63
37.5	105.91	104.88	103.83	102.83	101.96	101.14	100.34	99.58	98.86	98.22	97.74	97.32	96.84
40.0	78.74	78.11	77.46	76.85	76.35	75.91	75.51	75.15	74.84	74.55	74.30	74.06	73.86
42.5	59.48	59.23	58.90	58.57	58.34	58.14	57.95	57.79	57.66	57.56	57.48	57.44	57.44
45.0	45.45	45.42	45.35	45.27	45.21	45.16	45.09	45.05	45.10	45.17	45.22	45.28	45.38
47.5	35.14	35.23	35.30	35.36	35.42	35.49	35.56	35.64	35.76	35.90	36.04	36.18	36.31
50.0	27.63	27.78	27.93	28.07	28.20	28.35	28.50	28.66	28.81	28.98	29.15	29.33	29.48
52.5	22.11	22.29	22.47	22.64	22.81	22.98	23.17	23.36	23.54	23.71	23.90	24.08	24.24
55.0	18.02	18.20	18.38	18.57	18.75	18.93	19.13	19.32	19.50	19.68	19.87	20.05	20.23
57.5	14.98	15.16	15.34	15.53	15.71	15.90	16.08	16.27	16.45	16.63	16.80	16.96	17.12
60.0	12.73	12.90	13.06	13.22	13.40	13.58	13.76	13.93	14.09	14.25	14.39	14.53	14.67
62.5	10.74	10.87	10.99	11.13	11.30	11.47	11.64	11.79	11.95	12.09	12.20	12.31	12.42
65.0	8.74	8.85	8.97	9.10	9.24	9.39	9.52	9.65	9.77	9.87	9.96	10.04	10.10
67.5	6.77	6.87	6.97	7.08	7.21	7.33	7.45	7.55	7.64	7.71	7.77	7.81	7.83
70.0	5.00	5.06	5.13	5.22	5.31	5.40	5.49	5.57	5.62	5.66	5.67	5.68	5.66
72.5	3.49	3.53	3.58	3.64	3.72	3.80	3.88	3.94	3.97	3.97	3.96	3.93	3.88
75.0	2.16	2.17	2.20	2.25	2.32	2.40	2.47	2.53	2.56	2.57	2.54	2.48	2.40
77.5	0.71	0.71	0.71	0.71	0.71	0.70	0.70	0.70	0.70	0.70	0.70	0.70	0.70
80.0	0.51	0.51	0.51	0.51	0.51	0.51	0.51	0.51	0.51	0.51	0.51	0.51	0.51
82.5	0.32	0.32	0.32	0.32	0.31	0.31	0.31	0.31	0.31	0.31	0.31	0.32	0.32
85.0	0.34	0.36	0.36	0.34	0.30	0.25	0.21	0.19	0.18	0.18	0.21	0.25	0.30
87.5	0.03	0.03	0.03	0.03	0.03	0.02	0.02	0.02	0.02	0.02	0.02	0.02	0.02
90.0	0.03	0.02	0.02	0.02	0.02	0.02	0.03	0.03	0.03	0.02	0.02	0.02	0.02
92.5	0.02	0.02	0.02	0.02	0.02	0.02	0.03	0.03	0.03	0.02	0.02	0.02	0.02
95.0	0.02	0.02	0.02	0.02	0.02	0.02	0.02	0.02	0.02	0.02	0.02	0.02	0.02
97.5	0.02	0.02	0.02	0.02	0.02	0.02	0.02	0.02	0.02	0.02	0.02	0.02	0.02
100.0	0.02	0.02	0.02	0.02	0.02	0.01	0.01	0.01	0.01	0.01	0.01	0.02	0.02
102.5	0.01	0.01	0.01	0.01	0.01	0.01	0.01	0.01	0.01	0.01	0.01	0.01	0.01
105.0	0.01	0.01	0.01	0.01	0.01	0.01	0.01	0.01	0.01	0.01	0.01	0.01	0.01
107.5	0.01	0.01	0.01	0.01	0.01	0.01	0.01	0.01	0.01	0.01	0.01	0.01	0.01
110.0	0.01	0.01	0.01	0.01	0.01	0.01	0.01	0.01	0.01	0.01	0.01	0.01	0.01
112.5	0.01	0.01	0.01	0.01	0.01	0.01	0.01	0.01	0.01	0.01	0.01	0.01	0.01
115.0	0.01	0.01	0.01	0.01	0.01	0.01	0.01	0.01	0.01	0.01	0.01	0.01	0.01
117.5	0.01	0.01	0.01	0.01	0.01	0.01	0.01	0.01	0.01	0.01	0.01	0.01	0.01
120.0	0.01	0.01	0.01	0.01	0.01	0.01	0.01	0.01	0.01	0.01	0.01	0.01	0.01
122.5	0.01	0.01	0.01	0.01	0.01	0.01	0.01	0.01	0.01	0.01	0.01	0.01	0.01
125.0	0.01	0.01	0.01	0.01	0.01	0.01	0.01	0.01	0.01	0.01	0.01	0.01	0.01
127.5	0.01	0.01	0.01	0.01	0.01	0.01	0.01	0.01	0.01	0.01	0.01	0.01	0.01
130.0	0.01	0.01	0.01	0.01	0.01	0.01	0.01	0.01	0.01	0.01	0.01	0.01	0.01
132.5	0.01	0.01	0.01	0.01	0.01	0.01	0.01	0.01	0.01	0.01	0.01	0.01	0.01
135.0	0.01	0.01	0.01	0.01	0.01	0.01	0.01	0.01	0.01	0.01	0.01	0.01	0.01
137.5	0.01	0.01	0.01	0.01	0.01	0.01	0.01	0.01	0.01	0.01	0.01	0.01	0.01
140.0	0.01	0.01	0.01	0.01	0.01	0.01	0.01	0.01	0.01	0.01	0.01	0.01	0.01
142.5	0.01	0.01	0.01	0.01	0.01	0.01	0.01	0.01	0.01	0.01	0.01	0.01	0.01
145.0	0.01	0.01	0.01	0.01	0.01	0.01	0.01	0.01	0.01	0.01	0.01	0.01	0.01
147.5	0.01	0.01	0.01	0.01	0.01	0.01	0.01	0.01	0.01	0.01	0.01	0.01	0.01
150.0	0.01	0.01	0.01	0.01	0.01	0.01	0.01	0.01	0.01	0.01	0.01	0.01	0.01
152.5	0.02	0.02	0.02	0.01	0.02	0.02	0.02	0.02	0.02	0.02	0.02	0.02	0.02
155.0	0.02	0.02	0.02	0.02	0.02	0.02	0.02	0.02	0.02	0.02	0.02	0.02	0.02
157.5	0.02	0.02	0.02	0.02	0.02	0.02	0.02	0.02	0.02	0.02	0.02	0.02	0.02
160.0	0.02	0.02	0.02	0.02	0.02	0.02	0.02	0.02	0.02	0.02	0.02	0.02	0.02
162.5	0.01	0.01	0.01	0.01	0.02	0.02	0.02	0.01	0.01	0.01	0.01	0.01	0.01
165.0	0.01	0.01	0.01	0.01	0.01	0.01	0.01	0.01	0.01	0.01	0.01	0.01	0.01
167.5	0.01	0.01	0.01	0.01	0.01	0.01	0.01	0.01	0.01	0.01	0.01	0.01	0.01
170.0	0.01	0.01	0.01	0.01	0.01	0.01	0.01	0.01	0.01	0.01	0.01	0.01	0.01
172.5	0.01	0.01	0.01	0.01	0.01	0.01	0.01	0.01	0.01	0.01	0.01	0.01	0.01
175.0	0.02	0.02	0.02	0.02	0.02	0.02	0.02	0.02	0.02	0.02	0.02	0.02	0.01
177.5	0.01	0.01	0.01	0.01	0.01	0.01	0.01	0.01	0.01	0.01	0.01	0.01	0.01
180.0	0.01	0.01	0.01	0.01	0.01	0.01	0.01	0.01	0.01	0.01	0.01	0.01	0.01

UNIT: cd

Unless otherwise stated the results shown in this test report refer only to the sample(s) tested. This test report cannot be reproduced, except in full, without prior written permission of the Company. 除非另有說明，此報告結果僅對測試之樣品負責。本報告未經本公司書面許可，不可部份複製。

This document is issued by the Company subject to its General Conditions of Service printed overleaf, available on request or accessible at www.sgs.com/terms_and_conditions.htm and, for electronic format documents, subject to Terms and Conditions for Electronic Documents at www.sgs.com/en/Terms-and-Conditions/Terms-e-Document. Attention is drawn to the limitation of liability, indemnification and jurisdiction issues defined therein. Any holder of this document is advised that information contained hereon reflects the Company's findings at the time of its intervention only and within the limits of Client's instructions, if any. The Company's sole responsibility is to its Client and this document does not exonerate parties to a transaction from exercising all their rights and obligations under the transaction documents. This document cannot be reproduced except in full, without prior written approval of the Company. Any unauthorized alteration, forgery or falsification of the content or appearance of this document is unlawful and offenders may be prosecuted to the fullest extent of the law.

Gamma/C	325.0	327.5	330.0	332.5	335.0	337.5	340.0	342.5	345.0	347.5	350.0	352.5	355.0
0.0	4984.84	4984.84	4984.84	4984.84	4984.84	4984.84	4984.84	4984.84	4984.84	4984.84	4984.84	4984.84	4984.84
2.5	4860.78	4856.33	4852.06	4848.43	4845.03	4841.52	4838.14	4835.05	4832.19	4829.59	4827.09	4824.41	4821.92
5.0	4616.06	4608.71	4601.51	4594.26	4587.13	4580.15	4573.60	4567.83	4562.66	4558.12	4554.01	4550.17	4546.50
7.5	4248.09	4237.51	4227.31	4217.70	4208.58	4199.97	4191.74	4183.72	4176.08	4168.85	4162.32	4157.04	4152.29
10.0	3767.80	3755.27	3743.02	3730.96	3719.55	3709.49	3700.03	3690.44	3681.35	3673.24	3665.88	3659.26	3653.28
12.5	3217.81	3204.50	3191.80	3179.70	3168.16	3157.02	3146.55	3137.08	3128.17	3119.39	3111.08	3103.36	3096.40
15.0	2671.70	2658.54	2646.19	2634.55	2623.55	2613.08	2603.23	2594.15	2585.43	2576.38	2567.95	2561.16	2555.23
17.5	2147.38	2136.03	2125.52	2115.77	2106.43	2097.17	2087.88	2077.97	2068.60	2060.87	2054.31	2049.39	2044.35
20.0	1602.28	1591.43	1580.87	1570.61	1560.97	1552.43	1544.58	1537.17	1530.13	1523.22	1516.73	1510.85	1505.65
22.5	1077.49	1068.94	1061.28	1052.20	1042.98	1033.96	1025.67	1019.04	1013.19	1007.44	1002.13	997.74	993.16
25.0	623.60	616.81	610.19	603.52	597.12	591.21	585.79	580.98	576.67	572.80	569.33	566.20	563.47
27.5	363.46	359.96	356.72	354.16	351.82	349.32	346.89	344.60	342.55	340.89	339.53	338.49	337.65
30.0	248.45	246.32	244.30	242.44	240.70	239.03	237.54	236.42	235.45	234.61	233.51	232.94	232.52
32.5	176.85	175.53	174.31	173.24	172.29	171.44	170.70	170.09	169.58	169.12	168.76	168.57	168.46
35.0	130.82	130.11	129.45	128.89	128.28	127.36	126.60	126.54	126.60	126.24	125.86	125.74	125.75
37.5	96.41	96.08	95.80	95.51	95.29	95.19	95.13	95.03	94.98	95.05	95.17	95.28	95.42
40.0	73.70	73.59	73.53	73.49	73.48	73.49	73.52	73.59	73.69	73.84	74.02	74.19	74.38
42.5	57.46	57.48	57.52	57.60	57.70	57.80	57.93	58.10	58.30	58.51	58.72	58.94	59.17
45.0	45.48	45.59	45.70	45.83	45.97	46.14	46.32	46.50	46.70	46.94	47.18	47.41	47.64
47.5	36.45	36.61	36.78	36.93	37.10	37.28	37.47	37.68	37.89	38.09	38.30	38.52	38.74
50.0	29.63	29.80	29.98	30.14	30.31	30.49	30.69	30.90	31.11	31.30	31.50	31.70	31.91
52.5	24.40	24.57	24.74	24.92	25.09	25.28	25.47	25.66	25.86	26.05	26.24	26.43	26.61
55.0	20.40	20.56	20.73	20.90	21.07	21.23	21.40	21.56	21.71	21.87	22.03	22.20	22.36
57.5	17.28	17.43	17.59	17.74	17.88	18.03	18.17	18.30	18.43	18.56	18.70	18.84	18.98
60.0	14.81	14.94	15.08	15.21	15.35	15.47	15.58	15.70	15.83	15.95	16.07	16.18	16.30
62.5	12.53	12.62	12.72	12.81	12.90	13.00	13.10	13.21	13.31	13.40	13.50	13.60	13.71
65.0	10.16	10.21	10.27	10.32	10.38	10.43	10.48	10.55	10.62	10.70	10.78	10.85	10.92
67.5	7.84	7.85	7.86	7.87	7.87	7.89	7.92	7.95	7.99	8.03	8.08	8.14	8.20
70.0	5.63	5.58	5.53	5.50	5.47	5.46	5.47	5.47	5.49	5.52	5.54	5.58	5.61
72.5	3.81	3.74	3.67	3.61	3.56	3.52	3.50	3.49	3.50	3.52	3.55	3.58	3.62
75.0	2.30	2.19	2.07	1.97	1.89	1.83	1.79	1.76	1.75	1.76	1.77	1.78	1.79
77.5	0.70	0.70	0.70	0.70	0.70	0.70	0.70	0.70	0.70	0.70	0.70	0.70	0.70
80.0	0.50	0.50	0.50	0.50	0.50	0.51	0.51	0.51	0.51	0.51	0.51	0.51	0.51
82.5	0.32	0.33	0.33	0.33	0.32	0.32	0.31	0.31	0.31	0.31	0.31	0.30	0.30
85.0	0.34	0.35	0.34	0.30	0.25	0.21	0.18	0.16	0.16	0.15	0.15	0.14	0.13
87.5	0.02	0.02	0.02	0.02	0.02	0.02	0.02	0.02	0.02	0.02	0.02	0.02	0.02
90.0	0.02	0.03	0.03	0.03	0.03	0.03	0.02	0.02	0.02	0.02	0.02	0.03	0.03
92.5	0.02	0.02	0.02	0.03	0.03	0.03	0.02	0.02	0.02	0.02	0.02	0.03	0.03
95.0	0.02	0.02	0.02	0.02	0.02	0.02	0.02	0.02	0.02	0.02	0.02	0.02	0.03
97.5	0.02	0.02	0.02	0.02	0.02	0.02	0.02	0.02	0.02	0.02	0.02	0.02	0.02
100.0	0.02	0.02	0.02	0.02	0.02	0.02	0.02	0.02	0.02	0.02	0.02	0.02	0.02
102.5	0.01	0.01	0.01	0.01	0.01	0.01	0.01	0.01	0.01	0.01	0.01	0.01	0.02
105.0	0.01	0.01	0.01	0.01	0.01	0.01	0.01	0.01	0.01	0.01	0.01	0.01	0.01
107.5	0.01	0.01	0.01	0.01	0.01	0.01	0.01	0.01	0.01	0.01	0.01	0.01	0.01
110.0	0.01	0.01	0.01	0.01	0.01	0.01	0.01	0.01	0.01	0.01	0.01	0.01	0.01
112.5	0.01	0.01	0.01	0.01	0.01	0.01	0.01	0.01	0.02	0.01	0.01	0.01	0.01
115.0	0.01	0.01	0.01	0.01	0.01	0.01	0.01	0.01	0.01	0.01	0.01	0.01	0.01
117.5	0.01	0.01	0.01	0.01	0.01	0.01	0.01	0.01	0.01	0.01	0.01	0.01	0.01
120.0	0.01	0.01	0.01	0.01	0.01	0.01	0.01	0.01	0.01	0.01	0.01	0.01	0.01
122.5	0.01	0.01	0.01	0.01	0.01	0.01	0.01	0.01	0.01	0.01	0.01	0.01	0.01
125.0	0.01	0.01	0.01	0.01	0.01	0.01	0.01	0.01	0.01	0.01	0.01	0.01	0.01
127.5	0.01	0.01	0.01	0.01	0.01	0.01	0.01	0.01	0.01	0.01	0.01	0.01	0.01
130.0	0.01	0.01	0.01	0.01	0.01	0.01	0.01	0.01	0.01	0.01	0.01	0.01	0.01
132.5	0.01	0.01	0.01	0.01	0.01	0.01	0.01	0.01	0.01	0.01	0.01	0.01	0.01
135.0	0.01	0.01	0.01	0.01	0.01	0.01	0.01	0.01	0.01	0.01	0.01	0.01	0.01
137.5	0.01	0.01	0.01	0.01	0.01	0.01	0.01	0.01	0.01	0.01	0.01	0.01	0.01
140.0	0.01	0.01	0.01	0.01	0.01	0.01	0.01	0.01	0.01	0.01	0.01	0.01	0.01
142.5	0.01	0.01	0.01	0.01	0.01	0.01	0.01	0.01	0.01	0.01	0.01	0.01	0.01
145.0	0.01	0.01	0.01	0.01	0.01	0.01	0.01	0.01	0.01	0.01	0.01	0.01	0.01
147.5	0.01	0.01	0.01	0.01	0.01	0.01	0.01	0.01	0.01	0.01	0.01	0.01	0.01
150.0	0.01	0.01	0.01	0.01	0.01	0.01	0.01	0.01	0.02	0.02	0.02	0.02	0.02
152.5	0.02	0.02	0.02	0.02	0.02	0.02	0.02	0.02	0.02	0.02	0.02	0.02	0.02
155.0	0.02	0.02	0.02	0.02	0.02	0.02	0.02	0.02	0.02	0.02	0.02	0.02	0.02
157.5	0.02	0.02	0.02	0.02	0.02	0.02	0.02	0.02	0.02	0.02	0.02	0.02	0.02
160.0	0.02	0.02	0.02	0.02	0.02	0.02	0.02	0.02	0.02	0.02	0.02	0.02	0.02
162.5	0.01	0.01	0.01	0.01	0.01	0.01	0.02	0.02	0.02	0.02	0.02	0.02	0.02
165.0	0.01	0.01	0.01	0.01	0.01	0.01	0.01	0.01	0.01	0.01	0.01	0.01	0.01
167.5	0.01	0.01	0.01	0.01	0.01	0.01	0.01	0.01	0.01	0.01	0.01	0.01	0.01
170.0	0.01	0.01	0.01	0.01	0.01	0.01	0.01	0.01	0.01	0.01	0.01	0.01	0.01
172.5	0.01	0.01	0.01	0.01	0.01	0.01	0.01	0.01	0.01	0.01	0.01	0.01	0.01
175.0	0.01	0.01	0.01	0.01	0.01	0.01	0.01	0.01	0.01	0.01	0.01	0.01	0.01
177.5	0.01	0.01	0.01	0.01	0.01	0.01	0.01	0.01	0.01	0.01	0.01	0.01	0.01
180.0	0.01	0.01	0.01	0.01	0.01	0.01	0.01	0.01	0.01	0.01	0.01	0.01	0.01

UNIT: cd

Unless otherwise stated the results shown in this test report refer only to the sample(s) tested. This test report cannot be reproduced, except in full, without prior written permission of the Company. 除非另有說明，此報告結果僅對測試之樣品負責。本報告未經本公司書面許可，不可部份複製。

This document is issued by the Company subject to its General Conditions of Service printed overleaf, available on request or accessible at www.sgs.com/terms_and_conditions.htm and, for electronic format documents, subject to Terms and Conditions for Electronic Documents at www.sgs.com/en/Terms-and-Conditions/Terms-e-Document. Attention is drawn to the limitation of liability, indemnification and jurisdiction issues defined therein. Any holder of this document is advised that information contained hereon reflects the Company's findings at the time of its intervention only and within the limits of Client's instructions, if any. The Company's sole responsibility is to its Client and this document does not exonerate parties to a transaction from exercising all their rights and obligations under the transaction documents. This document cannot be reproduced except in full, without prior written approval of the Company. Any unauthorized alteration, forgery or falsification of the content or appearance of this document is unlawful and offenders may be prosecuted to the fullest extent of the law.

Gamma/C	357.5	I min	I max	I mean
0.0	4984.84	4984.84	4984.84	4984.84
2.5	4819.94	4808.81	5037.29	4922.07
5.0	4542.83	4525.98	4954.18	4735.13
7.5	4147.48	4127.00	4727.97	4417.22
10.0	3647.82	3624.29	4335.35	3969.93
12.5	3090.44	3064.28	3822.66	3434.30
15.0	2549.68	2522.86	3240.36	2870.69
17.5	2037.38	2010.69	2653.96	2323.30
20.0	1501.33	1485.22	2062.10	1763.40
22.5	987.32	976.98	1481.01	1224.96
25.0	561.21	556.14	937.39	742.44
27.5	336.89	335.86	545.11	440.12
30.0	232.10	231.72	360.20	298.59
32.5	168.36	168.29	250.98	212.35
35.0	125.86	125.74	174.35	153.35
37.5	95.58	94.98	123.49	111.65
40.0	74.61	73.48	95.57	83.20
42.5	59.40	55.77	74.81	63.27
45.0	47.89	40.84	58.83	49.00
47.5	38.96	30.63	46.56	38.46
50.0	32.12	23.73	37.19	30.69
52.5	26.78	18.93	29.99	24.90
55.0	22.51	15.55	24.43	20.50
57.5	19.12	13.10	20.38	17.14
60.0	16.41	11.28	17.34	14.56
62.5	13.81	9.69	14.57	12.35
65.0	11.01	7.96	11.72	10.07
67.5	8.25	6.26	8.83	7.80
70.0	5.65	4.77	6.37	5.72
72.5	3.65	3.47	4.44	4.04
75.0	1.82	1.75	3.46	2.63
77.5	0.70	0.70	0.89	0.75
80.0	0.51	0.50	0.57	0.53
82.5	0.30	0.30	0.38	0.34
85.0	0.13	0.12	0.93	0.34
87.5	0.02	0.02	0.05	0.03
90.0	0.03	0.02	0.04	0.03
92.5	0.03	0.01	0.03	0.02
95.0	0.02	0.02	0.03	0.02
97.5	0.02	0.02	0.02	0.02
100.0	0.02	0.01	0.02	0.02
102.5	0.01	0.01	0.02	0.02
105.0	0.01	0.01	0.04	0.02
107.5	0.01	0.00	0.06	0.01
110.0	0.01	0.00	0.11	0.02
112.5	0.01	0.00	0.13	0.02
115.0	0.01	0.00	0.13	0.03
117.5	0.01	0.01	0.01	0.01
120.0	0.01	0.01	0.01	0.01
122.5	0.01	0.01	0.01	0.01
125.0	0.01	0.01	0.01	0.01
127.5	0.01	0.01	0.01	0.01
130.0	0.01	0.01	0.01	0.01
132.5	0.01	0.01	0.01	0.01
135.0	0.01	0.01	0.01	0.01
137.5	0.01	0.01	0.01	0.01
140.0	0.01	0.01	0.01	0.01
142.5	0.01	0.01	0.01	0.01
145.0	0.01	0.01	0.01	0.01
147.5	0.01	0.01	0.02	0.01
150.0	0.01	0.01	0.02	0.01
152.5	0.02	0.01	0.02	0.01
155.0	0.02	0.01	0.02	0.01
157.5	0.02	0.01	0.02	0.01
160.0	0.02	0.01	0.02	0.01
162.5	0.02	0.01	0.02	0.01
165.0	0.01	0.01	0.01	0.01
167.5	0.01	0.01	0.01	0.01
170.0	0.01	0.01	0.01	0.01
172.5	0.01	0.01	0.01	0.01
175.0	0.01	0.01	0.02	0.01
177.5	0.01	0.01	0.01	0.01
180.0	0.01	0.01	0.01	0.01

UNIT: cd

- End of Report -

Unless otherwise stated the results shown in this test report refer only to the sample(s) tested. This test report cannot be reproduced, except in full, without prior written permission of the Company. 除非另有說明，此報告結果僅對測試之樣品負責。本報告未經本公司書面許可，不可部份複製。

This document is issued by the Company subject to its General Conditions of Service printed overleaf, available on request or accessible at www.sgs.com/terms_and_conditions.htm and, for electronic format documents, subject to Terms and Conditions for Electronic Documents at www.sgs.com/en/Terms-and-Conditions/Terms-e-Documents. Attention is drawn to the limitation of liability, indemnification and jurisdiction issues defined therein. Any holder of this document is advised that information contained hereon reflects the Company's findings at the time of its intervention only and within the limits of Client's instructions, if any. The Company's sole responsibility is to its Client and this document does not exonerate parties to a transaction from exercising all their rights and obligations under the transaction documents. This document cannot be reproduced except in full, without prior written approval of the Company. Any unauthorized alteration, forgery or falsification of the content or appearance of this document is unlawful and offenders may be prosecuted to the fullest extent of the law.