

ZX16

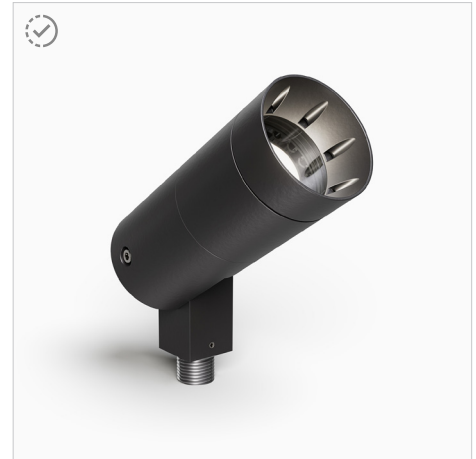
(includes former ZX16 and ZX16-SOi model)



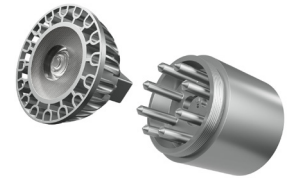
ACCENT & LANDSCAPE | ZX16 Series | 2.25"
7.5W (640LM) | 12V | SORAA, LED Lamp, Halogen

FEATURES

- Versatile round, directional MR16 (GU 5.3) modern accent light for residential and commercial environments.
- Flexible lamp configurations include SORAA LED Lamp with patented Heat Sink or use your preferred LED or Halogen lamp.
- Wet Location Listed, IP67 Standard.
- Machined from solid aircraft grade (6061-T6), corrosion-resistant aluminum, then anodized and powder coated to create a highly durable, marine grade finish. Also available in solid brass or stainless steel.
- 240° vertical and 360° horizontal adjustment via locking swivel stem design.
- Field changeable optical lensing available.
- Available with adjustable Angled, Long, and Short Glare Shields and ground, surface, and canopy mounting options.
- Every fixture tested end of line for water tightness and light quality.
- Readymade eligible configurations ship in 2 to 4 weeks, complete with selected accessories installed.



SORAA LED Standard Accent: ZX16-0R1SA-ABL



Integral SORAA® Heat Sink

US patented Thermobuster™ provides extra heat dissipation that reduces the lamp junction temperature by 77°F(25°C). Enables even the highest wattage SORAA® lamps to be used in an enclosed fixture without sacrificing its performance or life expectancy.

SPECIFICATIONS

<p>Materials Machined from billet 6061-T6 corrosion resistant aluminum with 304 stainless steel hardware. Available in 304/316 stainless steel or 360 brass upon request.</p> <p>Finish Aluminum materials are first anodized and then powder coated for a robust, marine grade finish. Stainless steel and brass models are provided with brushed surface.</p> <p>Hood and Glare Shield Weeping and Non-weeping Hood Styles. Set screw or threaded Angled, Short, or Long Glare Shields. (See page 4 for details).</p>	<p>Voltage 12V AC/DC. Requires remote step down transformer.</p> <p>Wattage Max. 9W for SORAA MR16 lamp with Thermobuster. Max. 50W for halogen lamp.</p> <p>Light Engine MR16 Halogen lamp or MR16 SORAA® LED lamp. Please refer to SORAA MR16 GU5.3 lamp selection.</p> <p>Dimming MLV, ELV Phase Control dimming. Please refer to website for SORAA MR16 dimmer compatibility.</p>	<p>Lamp Base/Socket Standard bi-pin socket for GU5.3/G4/GX5.3/GY6.35/GZ4.</p> <p>Optics Accepts up to 3 accessory pieces (hexcel louver, optical lenses, dichroic color filters, etc.). Secured in place with metal snap ring.</p> <p>Mounting Mounts using 1/2"-14 NPS male fitting compatible with all HK Lighting mounting accessories (See page 4 for details).</p> <p>Listings ETL Listed for Wet Location, IP67 Standard. RoHS Compliant.</p>
--	---	---

ORDERING GUIDE

EXAMPLE: ZX16-0R1SA-ABL-012VSL-08728-GSA-LVR-MHCS-06

MODEL	PHYSICAL OPTIONS			MATERIAL / FINISH		LIGHT ENGINE	
ZX16	OR1	S				012V	
ZX16 Series 2.25" Accent Light SORAA LED, LED Lamp or Halogen Lamp Low Voltage (GU 5.3)	TYPE	STYLE	HOOD	ABL Aluminum Black		VOLTAGE	LAMP
	OR1 Low Voltage, Round Accent ¹	S Standard	A A Style: Weeping	ABR Aluminum Bronze		012V 12V AC (GU5.3 Lamp)	NL No Lamp ²
			B B Style: No Weep Holes	AWH Aluminum White			SL SORAA Lamp Included ³
			C C Style: Threaded, Weeping	AAC Aluminum Anodized Clear ¹			SN SORAA Lamp Not Included ³
				NBR Natural Brass ¹			CC Custom Lamp Included
				NCU Natural Copper ¹			
				NSS Natural Stainless Steel ¹			
				CCC Custom Finish ¹			

Readymade eligible configurations ship in 2 to 4 weeks

¹ Consult factory for specialty finish quoting and lead times

² Compatible with Halogen Lamp

³ Only compatible with SORAA LED Lamp

OPTIONAL INSTALLED ACCESSORIES

SORAA LAMP	GLARE SHIELD	OPTIC	MOUNTING (Most common listed, see Page 4 for additional options)
XXXXX SORAA LED Lamp Code	GSA A/B Glare Shield Angled	LVR Hexcel Louver	GROUND MOUNT
08728 SORAA Brilliant HL 7.5W	GSL A/B Glare Shield Long	OSL Overall Spread Lens	MHCS-06 6" PVC Single Prong Spike (12V)
	GSS A/B Glare Shield Short	LSL Linear Spread Lens	MHCS-12 12" PVC Single Prong Spike (12V)
	CGSA C Glare Shield Angled	SOL Solite Soft Focus	MH02-06-BRZ 6" Stainless Steel 3-Prong Spike (12V) Bronze
	CGSL C Glare Shield Long	DCF Dichroic Filter	MH02-12-BRZ 12" Stainless Steel 3-Prong Spike (12V) Bronze
	CGSS C Glare Shield Short		JB-1 Brass In-ground Junction Box

ADDITIONAL ACCESSORIES (Not installed at time of order)

GLARE SHIELD ACCESSORIES		OPTIC ACCESSORIES	
GSL-16-XXX A/B Glare Shield Long	LVR-16 Hexcel Louver	OSL-16 Overall Spread Lens	
GSA-16-XXX A/B Glare Shield Angled	LSL-16 Linear Spread Lens	SOL-16 Solite Soft Focus	
GSS-16-XXX A/B Glare Shield Short	DCF-16 Dichroic Filter		
CGSL-16-XXX C Glare Shield Long			
CGSA-16-XXX C Glare Shield Angled			
CGSS-16-XXX C Glare Shield Short			

CANOPY MOUNT	
CM1-XXX 3.75" Square Canopy Plate	
CM3-XXX 4.75" Square Canopy Plate	
CM5-XXX 5" Round Canopy Plate	
CM5-2-XXX 5" Round Canopy Plate - Double	
SURFACE MOUNT	
CMLJ-XXX 2.7" Round Surface Box	
CB4.0-XXX 4" Round Surface Box	
CB5.5-XXX 5.5" Round Surface Box	
TREE MOUNT	
TM120-ABR Aluminum Tree Mount Box (120V)	
TM120-TS-ABR Stainless Steel Strap for TM125	
EXTENSIONS	
EX-12-XXX 12" Extension	
EX-24-XXX 24" Extension	
EL-XXX Elbow Extension	

• Consult Accessory Spec Sheet for desired option code.

• XXX represents color option.

• Readymade options available in ABL and ABR only unless noted by the part code above.

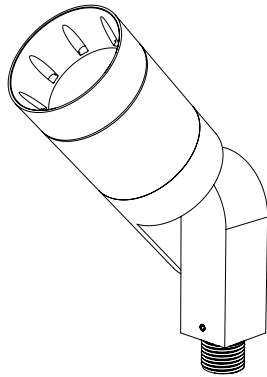
OUTDOOR MAGNETIC TRANSFORMERS (120V input/12VAC Output)

TRANSFORMERS (Go to [Accessories](#) for detailed specification)

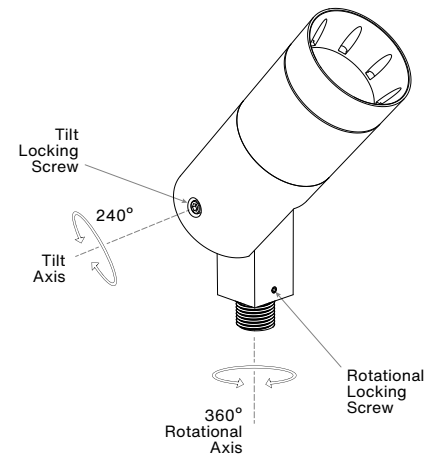
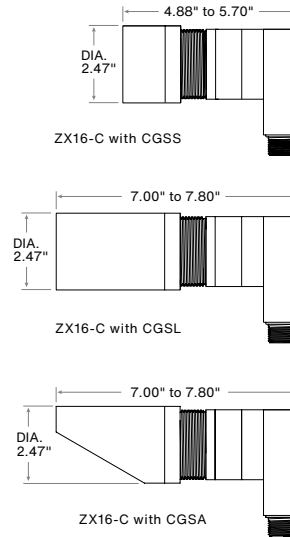
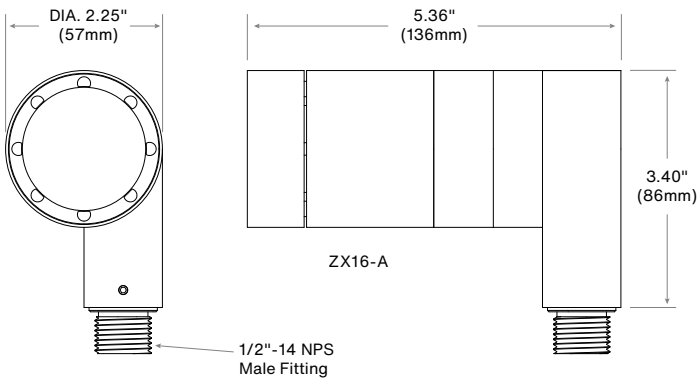
EXAMPLE: TXM-20-120

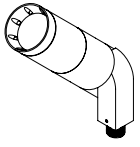
MODEL		WATTAGE (VA)	PRIMARY VOLTAGE (VAC)
TXM	Compact, damp location magnetic transformer 12VAC Output MLV Dimming	20, 40, 60, 100, 150, 300	120, 277
TXM	Stainless steel, wet location outdoor magnetic transformer with integrated light sensor Multitap 12VAC Output MLV Dimming	300	OTR-SS (120V Only)
TXS	Stainless steel, wet location outdoor magnetic transformer Multitap 12VAC Output MLV Dimming	150, 300, 600	-SS (120V Only)
IGT	In-grade outdoor magnetic transformer 12VAC Output MLV Dimming	50 (120V Only), 100, 300, 600	120, 277
TXE	In-fixture or near mounted electronic transformer 12VAC Output ELV Dimming Enclosure by others	60	120, 230, 277

PRODUCT DRAWINGS

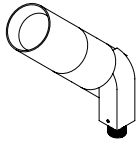


ZX16-0R1S

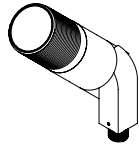


OPTIONS & ACCESSORIES
HOOD OPTIONS


A-HOOD
Versatile hood with 8 weep holes for water drainage. Regressed lens for glare control. Suggested for general use or when fixture is aimed in an up position.



B-HOOD
Similar to A hood but without weep holes. Regressed lens for glare control. Used in an interior or down light application.

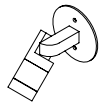


C-HOOD
Flush hood with machined threading on the outside for attachment of C-style glare shield, cleverly designed with hidden drainage channels.

OPTIONAL GLARE SHIELD

 For use with A & B Hood,
fastened with Set Screw

 For use with C Hood
fastened with Locking Ring

MOUNTING ACCESSORIES
Canopy Plate:


Fixture On CM5



CM2



CM1



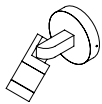
CM3



CM5



CM5-2

Surface Mount Box:


Fixture On CB5.1



CMLJ



CB3.5



CB4.0



CB4.0-SQ



CB5.1



CB5.1-2



CB5.5



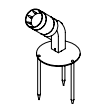
CB5.5-2



CB5.5-K/O



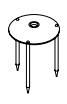
CB5.5-K/O-2

Ground Mount:


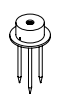
Fixture On MH02



MHCS



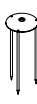
MH02



MH02-T



MH05



MH02-12



MH02-T-12



MHVL6-12



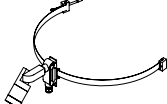
MHVL12-24



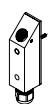
MH01



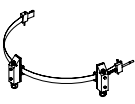
JB-1

Tree Mount:


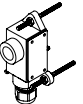
Fixture On TM120-TS



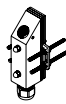
TM125



TM125-TS-2



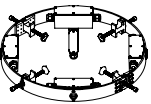
TM120-C-SM-HB



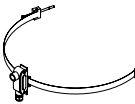
TM125-HB



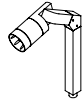
TMR2



TS-SO



TM120-TS

Extension:


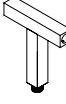
Fixture With EX,EL



EX



EL



T-BAR

Sign Light Arm: Please reference the Sign & Pole Mounting section in [Accessories](#) on our website.

Notes: