

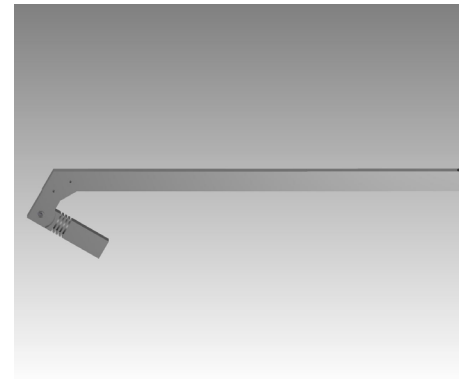
SIGN-1-08L-SQ

LED Sign Light . 08 Series



Product Features

- 3W LED, 12V architectural square profile sign light.
- ETL outdoor wet location listed. IP67 standard.
- Utilize adjustable accent fixture head with directional light.
- Accommodates different beam spread reflectors and optic accessories.
- Machined from solid billet 6061-T6 corrosion resistant aluminum.
- Modular components - field changeable LED module & beam spread reflectors.



Specification

Materials: Machined from billet 6061-T6 corrosion resistant aluminum with 304 stainless steel hardware. Available in 304/316 stainless steel or 360 brass upon request.

Glare Shield: 3 optional glare shields(GSL-long, GSA-angled GSS-short) for additional glare control. See page 3 for details.

Voltage: 12V AC/DC. Requires remote step down transformer.

Wattage: 3W HK LED.

Light Source: CRI 83. Available in CRI95 upon request. The chromaticity range is within a 3-step McAdam Ellipse. Standard CCT options are 2700K, 3000K, 4000K.

Lamp Base/Socket: Innovative cone-shaped lamp base and receptacle socket maximize the surface contact area to dissipate heat more effectively. See "Resources" for details.

Dimmability: MLV or ELV.

Finish: Polyester powder coat on all aluminum materials with RoHS compliant procedures. Anodized finish is available. Stainless steel and brass models are provided with brushed surface.

Optical Accessories: Accepts up to 3 accessories (hexcel louver, optical lenses, dichroic color filters, etc.). Secured in place with metal snap ring.

Ordering Guide

EXAMPLE: SIGN-1-08L-SQ - GSL - 12V - 3 - 27 - 21 - BK - LVR - 12" - CM5

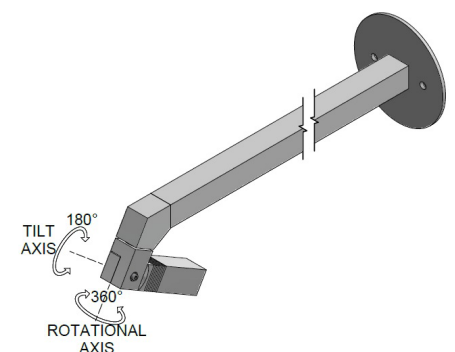
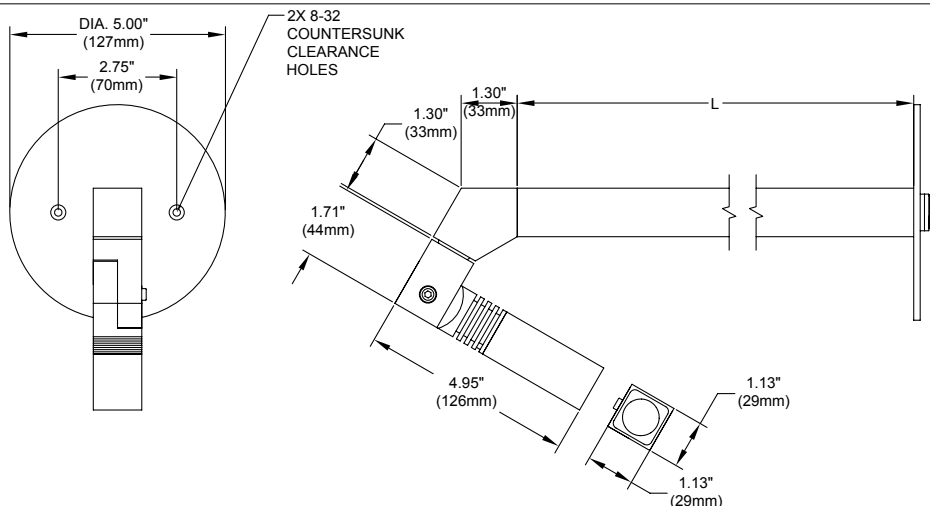
SERIES	MATERIAL	OPTIONAL GLARE SHIELD	VOLTAGE	WATTAGE	CCT	OPTICS	FINISH	OPTIONAL SELECT UP TO 3 OPTIC ACCESSORIES	EXTENSION SIZE(L)	OPTIONAL MOUNTING ACCESSORIES
SIGN-1-08L-SQ	-	-	12V	-	-	-	-	-	-	-
	BLANK Aluminum(Standard)	GSL		3 3W	27 2700K	19 19°	Standard	LVR Hexcel Louver	12"	See page 2 for quick reference, or "Accessories" link for detailed specification.
	NBR Natural Brass	GSA			30 3000K	26 26°	BK Black Powder Coat	OSL Overall Spread Lens	24"	
	NSS Natural Stainless Steel	GSS			40 4000K	51 51°	BZ Bronze Powder Coat	LSL Linear Spread Lens	30"	
	CU Natural Copper						WT White Powder Coat	SOL Solite Soft Focus		
							Premium ABK Anodized Black ACL Anodized Clear CC Custom Powder Coat	DF Dichroic Filter		

Remote Step Down Transformer (Optional).
See "Accessories" link for detailed specification.

Model	Wattage(VA)	Primary Voltage(VAC)	Secondary Volt(VAC)	Dimming Method	Characters
-	-	-	-	-	-
TXM	20 40 50 60 100 150 300	120 or 277	12	MLV	Outdoor, Wall Mount, Compact
TXS	150 300 600	120	Multi-tap of 12, 13, 14, 15 VAC	MLV	Outdoor, Wall mount, Stainless Steel Case
IGT	50(120V only) 100 300 600	120 or 277	12	MLV	In-grade
TXE	60	120, 230, or 277	12	ELV	Needs Enclosure, 6ft working distance

Product Drawings

NOTE: Specification and dimensions subject to change without notice.

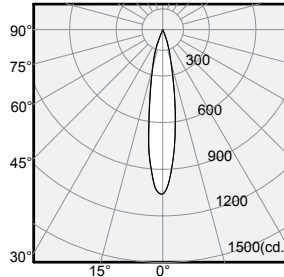


Photometry & Energy Data

MODEL SIGN-1-08L-SQ-3W-N

Input Power	2.97W
Color Temperature (CCT)	3000K
Color Rendering Index (Ra)	80
Beam Angle	18.4°
Max. Candlepower	1037cd
Delivered Lumens	171lm
Efficacy	57lm/W

Polar Graph - Intensity



Cone of Light - Illuminance

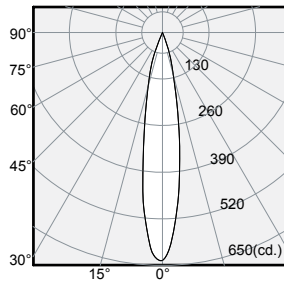
Center Beam (fc)	Beam Diameter	Distance
259	0.6'	2.0'
65	1.3'	4.0'
29	1.9'	6.0'
16	2.6'	8.0'
10	3.2'	10.0'

1/2 Beam Angle: 18.4°

MODEL SIGN-1-08L-SQ-3W-M

Input Power	2.98W
Color Temperature (CCT)	3000K
Color Rendering Index (Ra)	80
Beam Angle	25.4°
Max. Candlepower	636cd
Delivered Lumen	169lm
Efficacy	56lm/W

Polar Graph - Intensity



Cone of Light - Illuminance

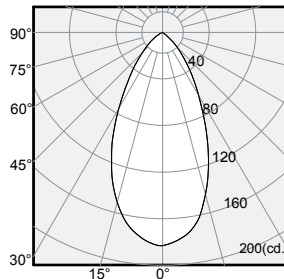
Center Beam (fc)	Beam Diameter	Distance
159	0.9'	2.0'
40	1.8'	4.0'
17	2.7'	6.0'
10	3.6'	8.0'
6	4.5'	10.0'

1/2 Beam Angle: 25.4°

MODEL SIGN-1-08L-SQ-3W-W

Input Power	3.0W
Color Temperature (CCT)	3000K
Color Rendering Index (Ra)	80
Beam Angle	50.9°
Max. Candlepower	183cd
Delivered Lumen	157lm
Efficacy	53lm/W

Polar Graph - Intensity



Cone of Light - Illuminance

Center Beam (fc)	Beam Diameter	Distance
46	1.9'	2.0'
11	3.8'	4.0'
5	5.7'	6.0'
3	7.6'	8.0'
2	9.5'	10.0'

1/2 Beam Angle: 50.9°

Wattage Multiplier Table

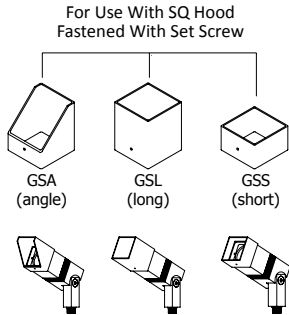
Wattage	Multiplier
3Watt	1.00

CCT Multiplier Table

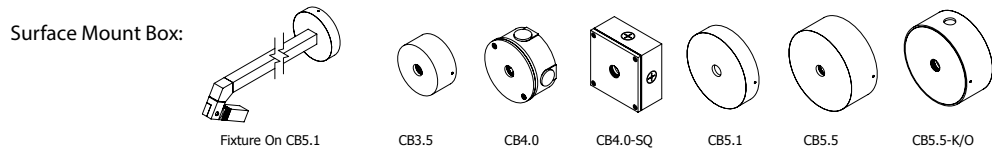
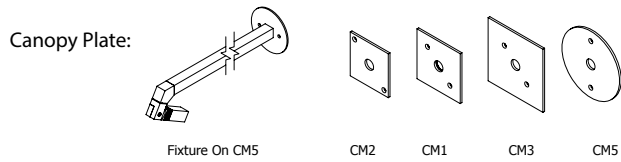
Color Temp.	Multiplier
2700k	0.96
3000k	1.00
4000k	1.03

Product Options & Accessories

Optional Glare Shield



Mounting Accessories



Notes