

ZXL11-IP

LED Image Projector . ZX11 Series



Product Features

- Small LED image projector using GOBO, color filter for outdoor or indoor application.
- ETL outdoor wet location listed. IP65 standard.
- Machined from solid billet 6061-T6 corrosion resistant aluminum.
- 240° vertical and 360° horizontal adjustment via unique swivel stem design.
- Modular components - field changeable LED module & GOBO accessories.

Specification

Materials: Machined from billet 6061-T6 corrosion resistant aluminum with 304 stainless steel hardware. Available in 304/316 stainless steel or 360 brass upon request.

Glare Shield: 3 optional glare shields(GSL-long, GSA-angled GSS-short) for additional glare control. See page 3 for details.

Voltage: 12V AC/DC. Requires remote step down transformer.

Wattage: 5 or 7W HK LED.

Light Source: CRI 83. Available in CRI95 upon request. The chromaticity range is within a 3-step McAdam Ellipse. Standard CCT options are 2700K, 3000K, 4000K.

Lamp Base/Socket: Innovative cone-shaped lamp base and receptacle socket maximize the surface contact area to dissipate heat more effectively. See "Resources" for details.

Dimmability: MLV or ELV.

Finish: Polyester powder coat on all aluminum materials with RoHS compliant procedures. Anodized finish is available. Stainless steel and brass models are provided with brushed surface.

Optical Accessories: Accepts combinations of accessories (including colorizer, color filters, steel gobo etc.). Secured in place with metal snap ring.

Mounting Method : Mounts using 1/2"-14 NPS male fitting compatible with all HK Lighting Group mounting devices.

GOBO Size : See data on second page.

Ordering Guide

EXAMPLE: ZXL11-IP - GSL - 12V - 5 - 27 - BK - GOBO - MH02

SERIES	MATERIAL	OPTIONAL GLARE SHIELD	VOLTAGE	WATTAGE	CCT	FINISH	OPTIC ACCESSORIES	OPTIONAL MOUNTING ACCESSORIES
ZXL11-IP			12V					
	BLANK Aluminum(Standard) NBR Natural Brass NSS Natural Stainless Steel CU Natural Copper	GSL GSA GSS		5 5W 7 7W	27 2700K 30 3000K 40 4000K	Standard BK Black Powder Coat BZ Bronze Powder Coat WT White Powder Coat Premium ABK Anodized Black ACL Anodized Clear CC Custom Powder Coat	GOBO CR Colorizer CF Color Filter	See page 3 for quick reference, or "Accessories" link for detailed specification.

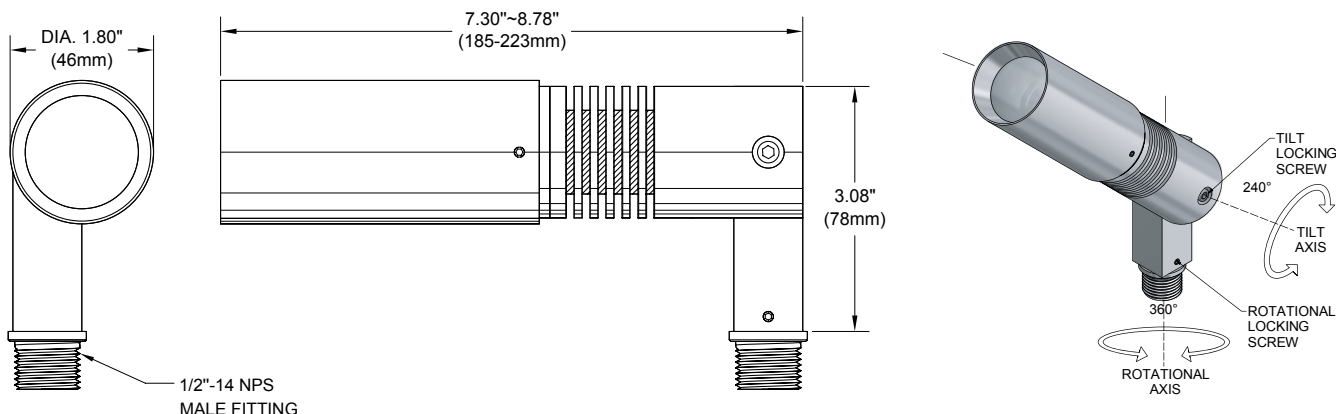
Remote Step Down Transformer (Optional).
See "Accessories" link for detailed specification.

Model	Wattage(VA)	Primary Voltage(VAC)	Secondary Volt(VAC)	Dimming Method	Characters
TXM	20 40 60 100 150 300	120 or 277	12	MLV	Outdoor, Wall Mount, Compact
TXS	150 300 600	120	Multi-tap of 12, 13, 14, 15 VAC	MLV	Outdoor, Wall mount, Stainless Steel Case
IGT	50(120V only) 100 300 600	120 or 277	12	MLV	in grade
TXE	60	120, 230, or 277	12	ELV	Needs Enclosure, 6ft working distance

Product Drawings

NOTE: Specification and dimensions subject to change without notice.

ZXL11-IP

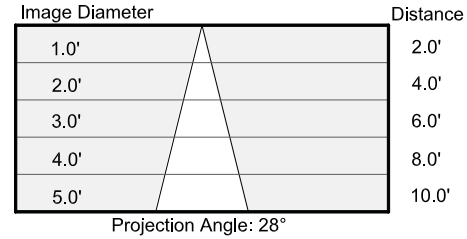


Photometry & Energy Data

MODEL ZXL11-IP-7W

Input Power	7.8W
Color Temperature (CCT)	3000K
Color Rendering Index (Ra)	80
Image Angle	28°
Delivered Lumens	to follow

Cone Of Image



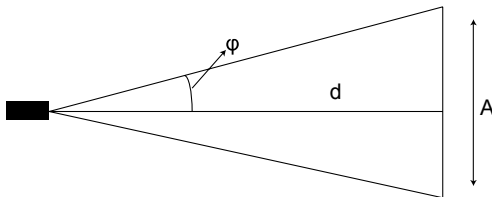
Wattage Multiplier Table

Wattage	Multiplier
5Watt	0.67
7Watt	1.00

CCT Multiplier Table

Color Temp.	Multiplier
2700k	0.96
3000k	1.00
4000k	1.03

Typical Data



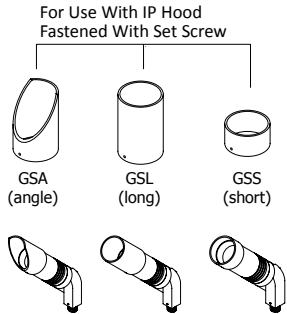
$\tan \phi = 0.5 A / d$
 d = distance between fixture and projection plan
 A = diameter if the projected image
 2ϕ = projection angle

Image Projector Size	Projection angle	GOBO size in mm (OD/IA)	Watt	Input Volt
ZXL08	28°	20/13(Rosco 518)	3	12 Vac
ZXL11	28°	27.5/22(Rosco Mac500/918)	5, 7	12 Vac
ZXL16/16i	40°	36.3/31(Rosco Studio Spot 575)	7, 10	12 Vac/ Line Volt
ZX16/16i-50i	40°	36.3/31(Rosco Studio Spot 575)	7.5, 9	12 Vac/ Line Volt
ZXL18i	40°	36.3/31(Rosco Studio Spot 575)	19	Line Volt
ZXL20i	50°	53.3/38(Rosco size D)	21, 28	Line Volt
ZXL30i	50°	100/75(Rosco size A)	41	Line Volt
ZXL38i	50°	100/75(Rosco size A)	52	Line Volt

Note: Data may vary due to different focal length of lens or IA of GOBO.

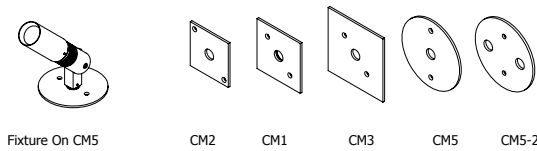
Product Options & Accessories

Optional Glare Shield

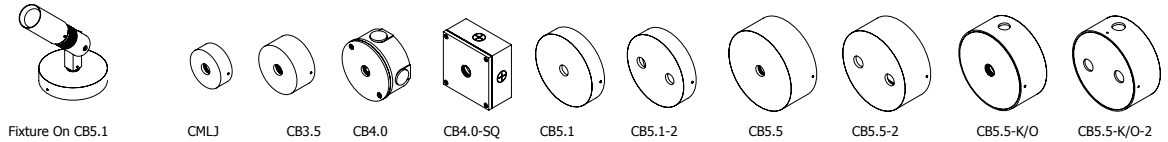


Mounting Accessories

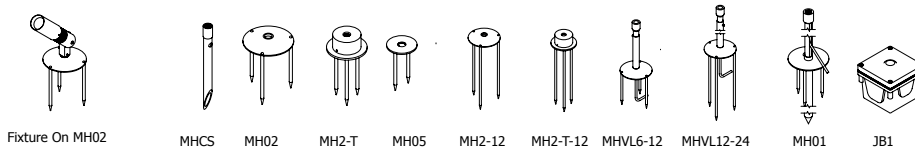
Canopy Plate:



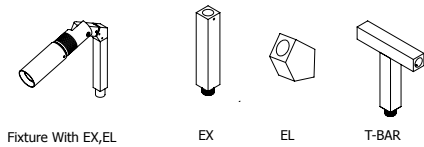
Surface Mount Box:



Ground Mount:



Extension:



Sign Light Arm: Please See The Sign Light Section

Notes