

# ZX30-WM/ZX30-WM-SOi

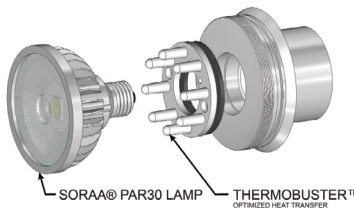
Wall Mount · ZX30 Series



## Product Features

- Fixed angle wall mount up light or down light with mounting canopy.
- ETL outdoor wet location listed. IP65 standard.
- Machined from solid billet 6061-T6 corrosion resistant aluminum.
- Swivel stem insert allows for precision adjustment during installation.
- Unique weep hole design in hood allows for either upward or downward facing installation with minimum light leak.
- US patented integral SORAA® heat sink.

**Integral SORAA® Heat Sink:** US patented Thermobuster™ provides extra heat dissipation that reduces the lamp junction temperature by 77°F(25°C). Enables even the highest wattage SORAA® lamps to be used in an enclosed fixture without sacrificing its performance or life expectancy.



## Specification

**Materials:** Machined from billet 6061-T6 corrosion resistant aluminum with 304 stainless steel hardware. Available in 304/316 stainless steel or 360 brass upon request.

**Hood and Glare Shield:** 3 available hood options to suit any application. 3 optional glare shields (short, long, angled) to complement each hood choice. See page 2 for details.

**Light Source:** PAR30 Halogen lamp or PAR30S SORAA® LED lamp. Please refer to [SORAA PAR30S E26](#) for lamp selection.

**Voltage:** 120V or 230V AC.

**Wattage:** Max. 18.5W for SORAA PAR30S lamp with Thermobuster. Max. 75W for halogen PAR30.

**Lamp Base/Socket:** Standard socket for E26.

**Dimmability:** Phase dimming, with trailing edge dimming preferable. Please refer to website for SORAA® PAR30S dimmer compatibility. [SORAA PAR30S dimmer compatibility.](#)

**Finish:** Polyester powder coat on all aluminum materials with RoHS compliant procedures. Anodized finish is available. Stainless steel and brass models are provided with brushed surface.

**Optical Accessories:** Accepts up to 3 accessory pieces (hexcel louver, optical lenses, dichroic color filters, etc.). Secured in place with metal snap ring.

**Mounting Accessory:** Utilizes 2x 8-32 UNC machine screws (provided) to attach to a standard octagon recessed back box (provided by others).

## Ordering Guide

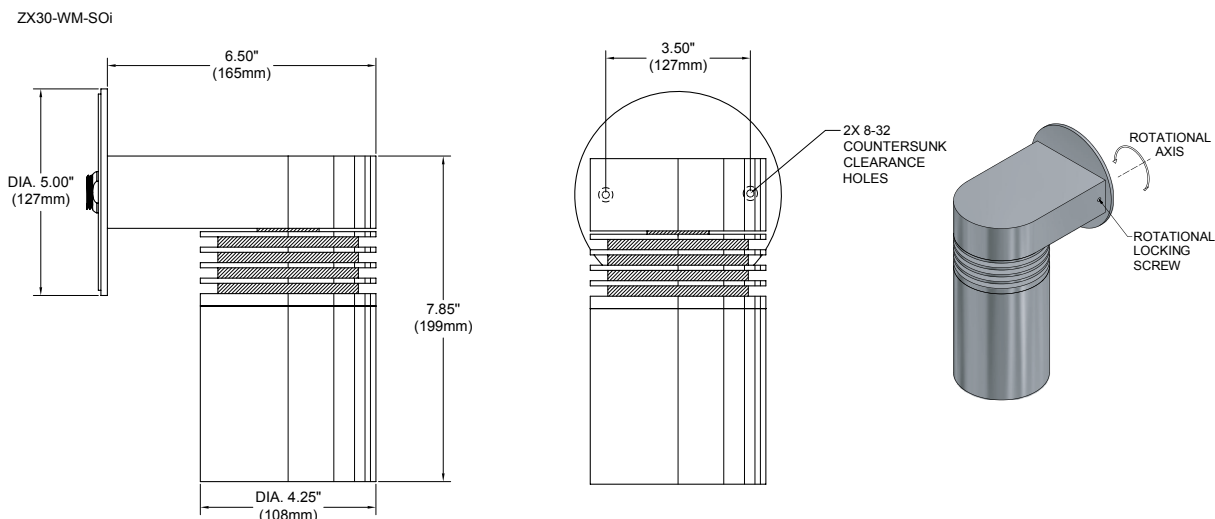
EXAMPLE: ZX30-WM-SOi - A - GSL - 120V - 00829 - BK - LVR - CM5  
ZX30-WM - A - GSL - 120V - 0 - BK - LVR - CM5

SERIES	MATERIAL	HOOD	OPTIONAL GLARE SHIELD	VOLTAGE	OPTIONAL LAMP	FINISH	OPTIONAL, SELECT UP TO 3 OPTIC ACCESSORIES	OPTIONAL MOUNTING ACCESSORIES
ZX30-WM HALOGEN	BLANK Aluminum(Standard) NBR Natural Brass NSS Natural Stainless Steel	A A-HOOD B B-HOOD	GSL GSA GSS	120V 230V	0-NONE  XXXXX SORAA® LAMP CODE (5 DIGIT SORAA CAT. NO®)	Standard BK Black Powder Coat BZ Bronze Powder Coat WT White Powder Coat Premium ABK Anodized Black ACL Anodized Clear CC Custom Powder Coat	LVR Hexcel Louver OSL Overall Spread Lens LSL Linear Spread Lens SQL Solite Soft Focus DF Dichroic Filter	See page 2 for quick reference, or " <a href="#">Accessories</a> " link for detailed specification.
ZX30-WM-SOi SORAA®	CU Natural Copper	C C-HOOD	CGSL CGSA CGSS					

\*SORAA® Lamp Selection : [SORAA PAR30S.](#)

## Product Drawings

NOTE: Specification and dimensions subject to change without notice.

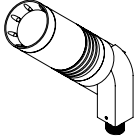


## Photometry & Energy Data

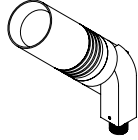
All SORAA® PAR30S E26 base lamps can be used in this fixture.  
Please refer to SORAA® website: [SORAA PAR30S](http://SORAA.PAR30S).

## Product Options & Accessories

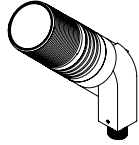
### Hood Options



**A-HOOD**  
Versatile hood with 8 weep holes for water drainage. Regressed lens for glare control. Suggested for general use or when fixture is aimed in an up position.



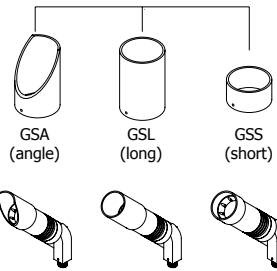
**B-HOOD**  
Similar to A hood but without weep holes. Regressed lens for glare control. Used in an interior or down light application.



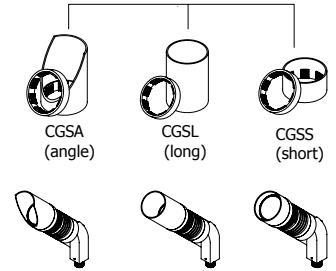
**C-HOOD**  
Flush hood with machined threading on the outside for attachment of C-style glare shield, cleverly designed with hidden drainage channels.

### Optional Glare Shield

For Use With A & B Hood  
Fastened With Set Screw

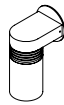


For Use With C Hood  
Fastened With Locking Ring

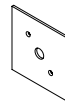


### Mounting Accessories

Canopy Plate:



Fixture On CM5

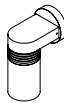


CM3



CM5

Surface Mount Box:



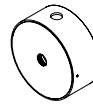
Fixture On CB5.1



CB5.1



CB5.5



CB5.5-K/O

### Notes