

SIGN-MTL

LED Sign Light . MTL Series



Product Features

- 360° distribution stylish LED path light.
- Adjustable fixture head.
- ETL outdoor wet location listed. IP67 standard.
- Different light projection including Type II, Type IV, Type V patterns.

Specification

Materials: Machined from billet 6061-T6 corrosion resistant aluminum with 304 stainless steel hardware. Available in 304/316 stainless steel or 360 brass upon request.

Light Source: CRI 83. Available in CRI95 upon request. The chromaticity range is within a 3-step McAdam Ellipse. Standard CCT options are 2700K, 3000K, 4000K.

Finish: Polyester powder coat on all aluminum materials with RoHS compliant procedures. Anodized finish is available. Stainless steel and brass models are provided with brushed surface.

Voltage: 12V AC/DC. Requires remote step down transformer.

Dimmability: MLV .

Wattage: 8W HK LED.

Ordering Guide

EXAMPLE: SIGN-MTL - 12V - 8 - 27 - TI - BK - 12"

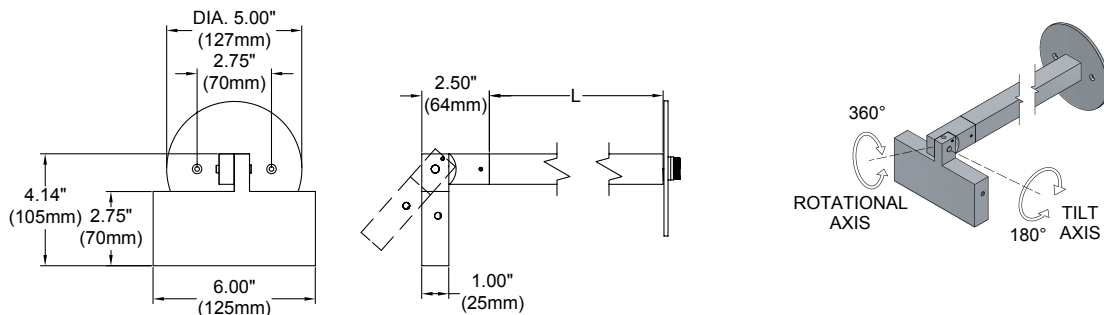
SERIES	MATERIAL	VOLTAGE	WATTAGE	CCT	TYPE OF DISTRIBUTION	FINISH	EXTENSION SIZE(L)
SIGN-MTL		12V					
	BLANK Aluminum(Standard)		8 8W	27 2700K	TI TYPE I	Standard	12"
	NBR Natural Brass			30 3000K	TII TYPE II	BK Black Powder Coat	24"
	NSS Natural Stainless Steel			40 4000K		BZ Bronze Powder Coat	30"
	CU Natural Copper					WT White Powder Coat	
						Premium	
						ABK Anodized Black	
						ACL Anodized Clear	
						CC Custom Powder Coat	

Remote Step Down Transformer (Optional).
See "[Accessories](#)" link for detailed specification.

Model	Wattage(VA)	Primary Voltage(VAC)	Secondary Volt(VAC)	Dimming Method	Characters
TXM	20 40 60 100 150 300	120 or 277	12	MLV	Outdoor, Wall Mount, Compact
TXS	150 300 600	120	Multi-tap of 12, 13, 14, 15 VAC	MLV	Outdoor, Wall mount, Stainless Steel Case
IGT	50(120V only) 100 300 600	120 or 277	12	MLV	In-grade
TXE	60	120, 230, or 277	12	ELV	Needs Enclosure, 6ft working distance

Product Drawings

NOTE: Specification and dimensions subject to change without notice.



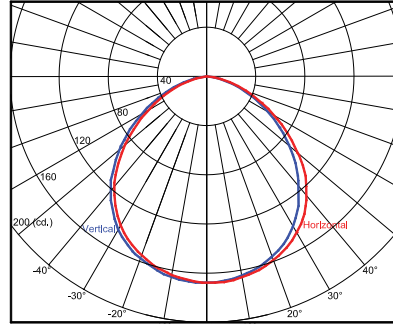
Photometry & Energy Data - Type I

MODEL SIGN-MTL-8W-TI

Input Power	7.7W
Color Temperature (CCT)	3000K
Color Rendering Index (Ra)	83
Beam Angle	104°
Max. Candlpower	168cd
Delivered Lumen	430lm
Efficacy	56lm/W

Color Temp.	Multiplier
2700K	0.97
3000K	1.00
4000K	1.05

Polar Graph - Intensity



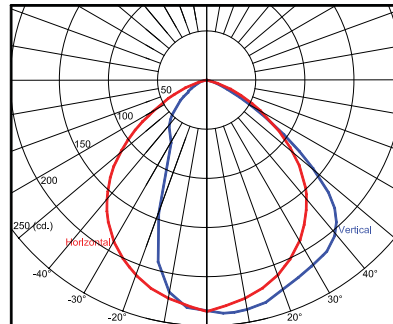
Photometry & Energy Data - Type II

MODEL SIGN-MTL-8W-TII

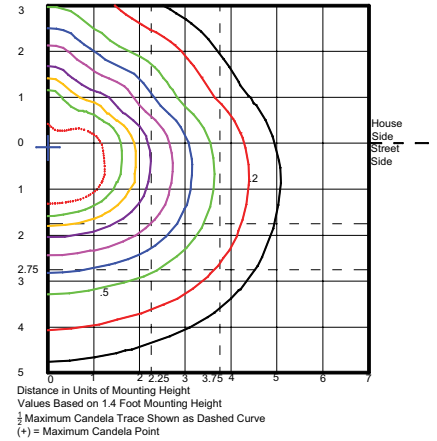
Input Power	8.2W
Color Temperature (CCT)	3000K
Color Rendering Index (Ra)	83
Maximum Candela Angle	0° H, 5° V
Max. Candlpower	237cd
Delivered Lumen	442lm
Efficacy	54lm/W

Color Temp.	Multiplier
2700K	0.97
3000K	1.00
4000K	1.05

Polar Graph - Intensity

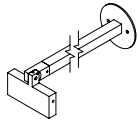


Isofootcandles of Horizontal Illuminance

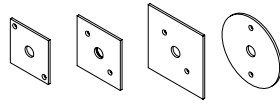


Mounting Accessories

Canopy Plate:

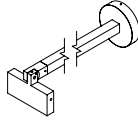


Fixture On CM5

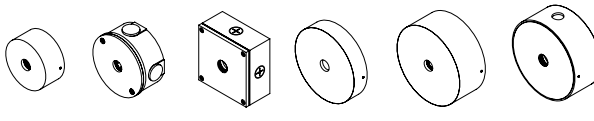


CM2 CM1 CM3 CM5

Surface Mount Box:



Fixture On CB5.1



CB3.5 CB4.0 CB4.0-SQ CB5.1 CB5.5 CB5.5-K/O

Notes