

ZXG-RH/ZXG-RH-SOI

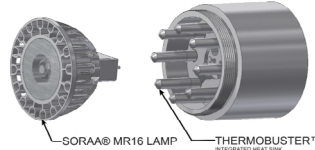
In-grade . ZXG Series



Product Features

- Stainless steel in-grade fixture with superior corrosion resistance.
- ETL outdoor wet location listed. IP67 standard.
- Compact size with 4" diameter profile.
- Built-in optic accessory holder.
- US patented integral SORAA® heat sink.

Integral SORAA® Heat Sink: US patented Thermobuster™ provides extra heat dissipation that reduces the lamp junction temperature by 77°F(25°C). Enables even the highest wattage SORAA® lamps to be used in an enclosed fixture without sacrificing its performance or life expectancy.



Specification

Materials:
 Outer housing: Stainless steel.
 Lamp holder and Aiming Assembly: Machined from billet 6061-T6 corrosion resistant aluminum.
 Hardware: 304 stainless steel hardware.

Light Source: MR16 Halogen lamp or MR16 SORAA® LED lamp. Please refer to [SORAA MR16 GU5.3](#) for lamp selection.

Voltage: 12V AC/DC. Requires remote step down transformer.

Wattage: Max. 9W for SORAA MR16 lamp with Thermobuster. Max. 20W for halogen MR16 without Thermobuster.

Lamp Base/Socket: Standard bi-pin socket for GU5.3/G4/GX5.3/GY6.35/GZ4.

Dimmability: MLV. Please refer to website for SORAA® MR16 dimmer compatibility. [SORAA MR16 dimmer compatibility](#).

Finish: Natural Stainless Steel.

Optical Accessories: Standard is with hexcel louver. Accepts up to 3 additional accessory pieces (hexcel louver, optical lenses, dichroic color filters, etc.). Secured in place with metal snap ring.

Ordering Guide

EXAMPLE: ZXG-RH-SOI - 00917 - 12V - NSS - LVR - FLANGE
 ZXG-RH - 0 - 12V - NSS - LVR - FLANGE

SERIES	OPTIONAL LAMP	VOLTAGE	FINISH	OPTIONAL, SELECT UP TO 2 OPTIC ACCESSORIES	OPTIONAL ACCESSORIES
ZXG-RH-SOI	-	-	-	-	-
ZXG-RH HALOGEN	0--NONE XXXXX SORAA® LAMP CODE (5 DIGIT SORAA CAT. NO.)	12V	NSS Natural Stainless Steel	LVR Hexcel Louver OSL Overall Spread Lens LSL Linear Spread Lens SOL Solite Soft Focus DF Dichroic Filter	See page 2 for quick reference, or "Accessories" link for detailed specification
ZXG-RH-SOI SORAA®					

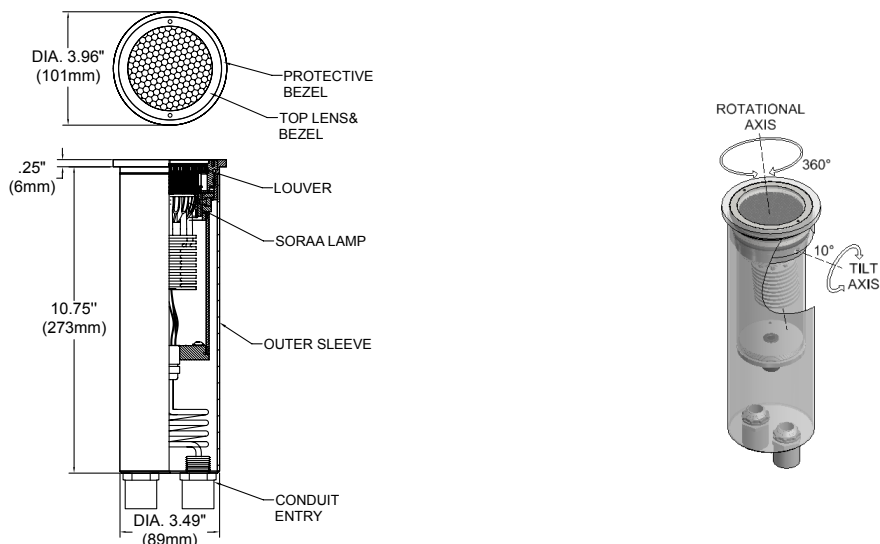
*SORAA® Lamp Selection : [SORAA MR16 GU5.3](#)

Remote Step Down Transformer (Optional). See ["Accessories"](#) link for detailed specification.

Model	Wattage(VA)	Primary Voltage(VAC)	Secondary Volt(VAC)	Dimming Method	Characters
TXM	20 40 60 100 150 300	120 or 277	12	MLV	Outdoor, Wall Mount, Compact
TXS	150 300 600	120	Multi-tap of 12, 13, 14, 15 VAC	MLV	Outdoor, Wall mount, Stainless Steel Case
IGT	50(120V only) 100 300 600	120 or 277	12	MLV	In-grade
TXE	60	120, 230, or 277	12	ELV	Needs Enclosure, 6ft working distance

Product Drawings

NOTE: Specification and dimensions subject to change without notice.

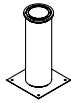


Photometry & Energy Data

All SORAA® MR16 GU5.3 base lamps can be used in this fixture.
Please refer to SORAA® website: [SORAA MR16 GU5-3](http://www.soraa.com/SORAA-MR16-GU5-3)

Accessories

Bottom Flange:



Fixture With Flange



Flange

Notes