

SIGN-2-11L

LED Sign Light . 11 Series



Product Features

- Twin-head (5~ 7W)x2 LED modular sign light.
- ETL outdoor wet location listed. IP67 standard.
- Utilize adjustable accent fixture head with directional light.
- Machined from solid billet 6061- T6 corrosion resistant aluminum.
- Accommodates different beam spread reflectors and optic accessories.
- Modular components - field changeable LED module & beam spread reflectors.

Specification

Materials: Machined from billet 6061-T6 corrosion resistant aluminum with 304 stainless steel hardware. Available in 304/316 stainless steel or 360 brass upon request.

Hood and Glare Shield: 3 available hood options to suit any application. 3 optional glare shields (short, long, angled) to complement each hood choice. See page 3 for details.

Voltage: 12V AC/DC. Requires remote step down transformer.

Wattage: (5 or 7W)x2 HK LED.

Light Source: CRI 83. Available in CRI95 upon request. The chromaticity range is within a 3-step McAdam Ellipse. Standard CCT options are 2700K, 3000K, 4000K.

Lamp Base/Socket: Innovative cone-shaped lamp base and receptacle socket maximize the surface contact area to dissipate heat more effectively. See "Resources" for details.

Dimmability: MLV or ELV.

Finish: Polyester powder coat on all aluminum materials with RoHS compliant procedures. Anodized finish is available. Stainless steel and brass models are provided with brushed surface.

Optical Accessories: Accepts up to 3 accessories (hexcel louver, optical lenses, dichroic color filters, etc.). Secured in place with metal snap ring.

Ordering Guide

EXAMPLE: SIGN-2-11L - A - GSL - 12V - 7 - 27 - 40 - BK - LVR - 12" - CM5

SERIES	MATERIAL	HOOD	OPTIONAL GLARE SHIELD	VOLTAGE	WATTAGE	CCT	OPTICS	FINISH	OPTIONAL SELECT UP TO 3 OPTIC ACCESSORIES	EXTENSION SIZE(L)	OPTIONAL MOUNTING ACCESSORIES	
SIGN-2-11L	-	-	-	12V	-	-	-	-	-	-	-	
	BLANK Aluminum(Standard)	A A-HOOD	GSL	5	5W x2	27	2700K	29	29°	Standard	LVR Hexcel Louver	12"
	NBR Natural Brass	B B-HOOD	GSA	7	7W x2	30	3000K	40	40°	BK Black Powder Coat	OSL Overall Spread Lens	24"
	NSS Natural Stainless Steel		GSS			40	4000K	57	57°	BZ Bronze Powder Coat	LSL Linear Spread Lens	30"
	CU Natural Copper	C C-HOOD	CGSL							WT White Powder Coat	SOL Solite Soft Focus	
			CGSA							Premium	DF Dichroic Filter	
			CGSS							ABK Anodized Black		
										ACL Anodized Clear		
										CC Custom Powder Coat		

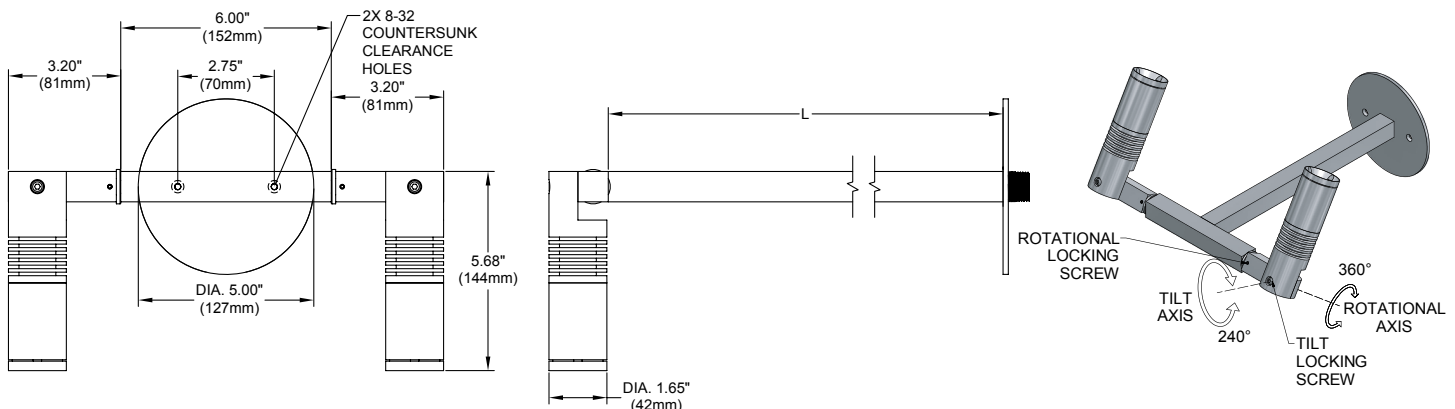
See page 3 for quick reference, or "Accessories" link for detailed specification.

Remote Step Down Transformer (Optional).
See "Accessories" link for detailed specification.

Model	Wattage(VA)	Primary Voltage(VAC)	Secondary Volt(VAC)	Dimming Method	Characters
TXM	20 40 60 100 150 300	120 or 277	12	MLV	Outdoor, Wall Mount, Compact
TXS	150 300 600	120	Multi-tap of 12, 13, 14, 15 VAC	MLV	Outdoor, Wall mount, Stainless Steel Case
IGT	50(120V only) 100 300 600	120 or 277	12	MLV	In-grade
TXE	60	120, 230, or 277	12	ELV	Needs Enclosure, 6ft working distance

Product Drawings

NOTE: Specification and dimensions subject to change without notice.

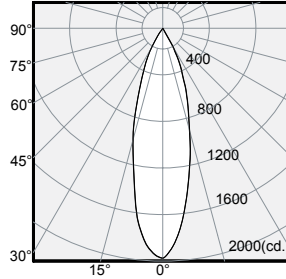


Photometry & Energy Data (Per Head)

MODEL SIGN-1-11L-7W-N

Input Power	8.1W
Color Temperature (CCT)	3000K
Color Rendering Index (Ra)	80
Beam Angle	28.7°
Max. Candlepower	1964cd
Delivered Lumens	636lm
Efficacy	78lm/W

Polar Graph - Intensity



Cone of Light - Illuminance

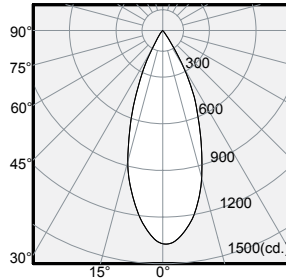
Center Beam (fc)	Beam Diameter	Distance
491	1.0'	2.0'
123	2.0'	4.0'
55	3.0'	6.0'
31	4.0'	8.0'
20	5.0'	10.0'

1/2 Beam Angle: 28.7°

MODEL SIGN-1-11L-7W-M

Input Power	8.1W
Color Temperature (CCT)	3000K
Color Rendering Index (Ra)	80
Beam Angle	39.2°
Max. Candlepower	1383cd
Delivered Lumen	632lm
Efficacy	78lm/W

Polar Graph - Intensity



Cone of Light - Illuminance

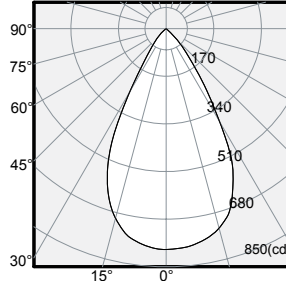
Center Beam (fc)	Beam Diameter	Distance
346	1.4'	2.0'
86	2.9'	4.0'
38	4.3'	6.0'
22	5.7'	8.0'
14	7.1'	10.0'

1/2 Beam Angle: 39.2°

MODEL SIGN-1-11L-7W-W

Input Power	8.1W
Color Temperature (CCT)	3000K
Color Rendering Index (Ra)	80
Beam Angle	56.9°
Max. Candlepower	811cd
Delivered Lumen	675lm
Efficacy	83lm/W

Polar Graph - Intensity



Cone of Light - Illuminance

Center Beam (fc)	Beam Diameter	Distance
203	2.2'	2.0'
135	4.3'	4.0'
23	6.5'	6.0'
13	8.7'	8.0'
8	10.8'	10.0'

1/2 Beam Angle: 56.9°

Wattage Mutiplier Table

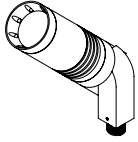
Wattage	Multiplier
5Watt	0.67
7Watt	1.00

CCT Multiplier Table

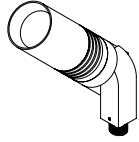
Color Temp.	Multiplier
2700K	0.96
3000K	1.00
4000K	1.03

Product Options & Accessories

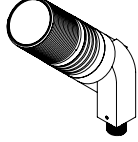
Hood Options



A-HOOD
Versatile hood with 8 weep holes for water drainage. Regressed lens for glare control. Suggested for general use or when fixture is aimed in an up position.



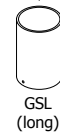
B-HOOD
Similar to A hood but without weep holes. Regressed lens for glare control. Used in an interior or down light application.



C-HOOD
Flush hood with machined threading on the outside for attachment of C-style glare shield, cleverly designed with hidden drainage channels.

Optional Glare Shield

For Use With A & B Hood
Fastened With Set Screw

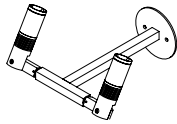


For Use With C Hood
Fastened With Locking Ring



Mounting Accessories

Canopy Plate:



Fixture On CM5



CM2



CM1

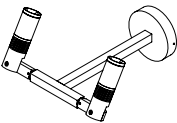


CM3



CM5

Surface Mount Box:



Fixture On CB5.1



CB3.5



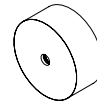
CB4.0



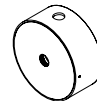
CB4.0-SQ



CB5.1



CB5.5



CB5.5-K/O

Notes