

ZXG-RH-GU10/ZXG-RH-GU10-SOi

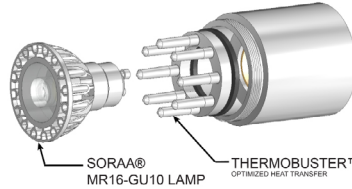
In-grade · ZXG Series



Product Features

- Stainless steel in-grade fixture with superior corrosion resistance.
- ETL outdoor wet location listed. IP67 standard.
- Compact size with 4" diameter profile.
- Built-in optic accessory holder.
- US patented integral SORAA® heat sink.
- 120V input utilizing GU10 lamp without transformer.

Integral SORAA® Heat Sink: US patented Thermobuster™ provides extra heat dissipation that reduces the lamp junction temperature by 77°F(25°C). Enables even the highest wattage SORAA® lamps to be used in an enclosed fixture without sacrificing its performance or life expectancy.



Specification

Materials:
 Outer housing: Stainless steel.
 Lamp holder and Aiming Assembly: Machined from billet 6061-T6 corrosion resistant aluminum.
 Hardware: 304 stainless steel hardware.

Light Source: MR16 GU10 Halogen lamp or MR16 GU10 SORAA® LED lamp. Please refer to [SORAA MR16 GU10](#) for lamp selection.

Voltage: 120 or 230V AC.

Wattage: Max. 9W for SORAA MR16 lamp with Thermobuster. Max. 20W for halogen MR16 without Thermobuster.

Lamp Base/Socket: Porcelain GU10 twist - lock lamp base.

Dimmability: ELV. Please refer to website for SORAA® MR16 dimmer compatibility. [SORAA GU10 dimmer compatibility](#).

Finish: Natural Stainless Steel.

Optical Accessories: Standard is with hexcel louver. Accepts up to 3 additional accessory pieces (hexcel louver, optical lenses, dichroic color filters, etc.). Secured in place with metal snap ring.

Ordering Guide

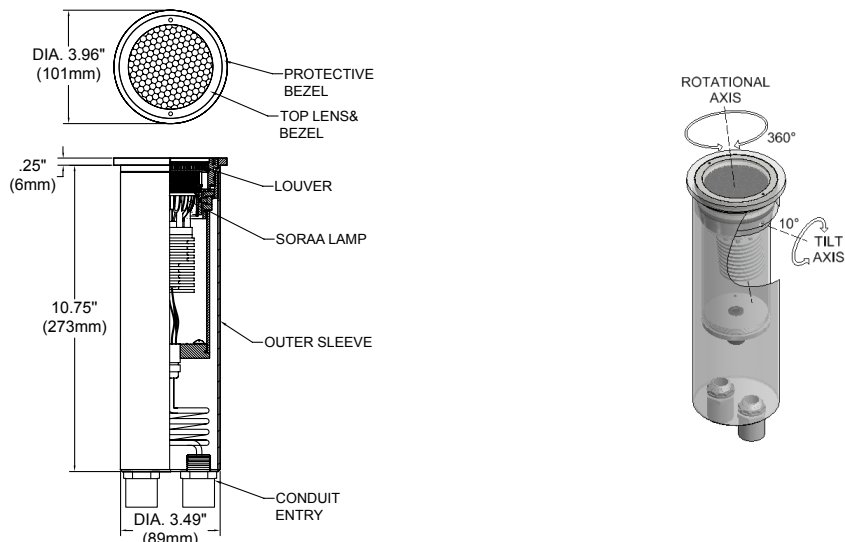
EXAMPLE: ZXG-RH-GU10-SOi - 00917 - 120V - NSS - LVR - FLANGE
 ZXG-RH-GU10 - 0 - 120V - NSS - LVR - FLANGE

SERIES	OPTIONAL LAMP	VOLTAGE	FINISH	OPTIONAL SELECT UP TO 2 OPTIC ACCESSORIES	OPTIONAL ACCESSORIES
ZXG-RH-SOi	-	-	-	-	-
ZXG-RH-GU10 HALOGEN	0-NONE XXXXX SORAA® LAMP CODE (5 DIGIT SORAA CAT. NO*)	120V 230V	NSS Natural Stainless Steel	LVR Hexcel Louver OSL Overall Spread Lens LSL Linear Spread Lens SOL Solite Soft Focus DF Dichroic Filter	See page 2 for quick reference, or "Accessories" link for detailed specification
ZXG-RH-GU10-SOi SORAA®					

*SORAA® Lamp Selection: [SORAA MR16 GU10](#)

Product Drawings

NOTE: Specification and dimensions subject to change without notice.

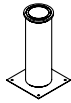


Photometry & Energy Data

All SORAA® MR16 GU10 base lamps can be used in this fixture.
Please refer to SORAA® website: [SORAA MR16 GU10](#)

Accessories

Bottom Flange:



Fixture With Flange



Flange

Notes