

GSA/GSS/GSL

ACCESSORIES | Glare Shield

FEATURES

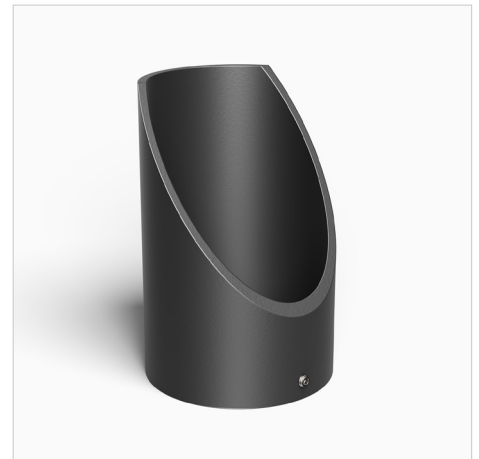
- Glare shield for additional glare reduction.
- Three different styles: 45° angle, long cylinder, and short cylinder.
- Attaches to fixture hood with a set screw.
- For use with A or B style hood.
- Machined from solid billet 6061-T6 corrosion resistant aluminum.



Short Glare Shield: GSS



Long Glare Shield: GSL

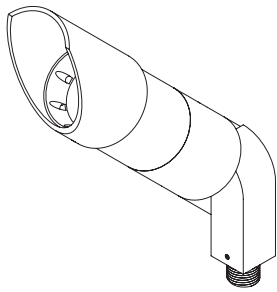
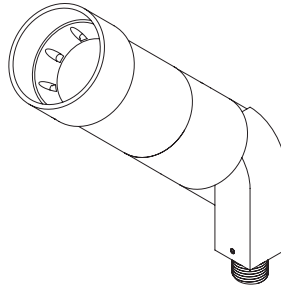
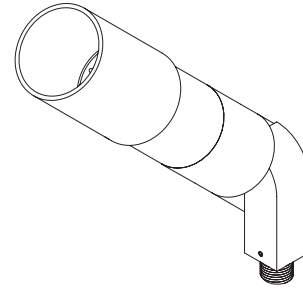


Angled Glare Shield: GSA

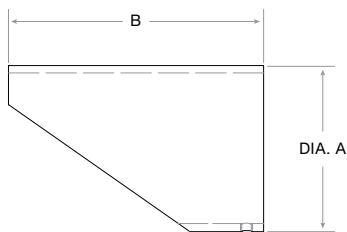
ORDERING GUIDE

EXAMPLE: GSA-16

MODEL/STYLE		SIZE	
GSA	Angled	08	ZX08 Series
GSS	Short	11	ZX11 Series
GSL	Long	16	ZX16 Series
		18	ZX18 Series
		20	ZX20 Series
		30	ZX30 Series
		38	ZX38 Series
		4.0	ZXL4.0 Series
5.0	ZXL5.0 Series		

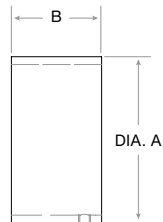
PRODUCT DRAWINGS

GSA

GSS

GSL

GSA


GSA SIZES

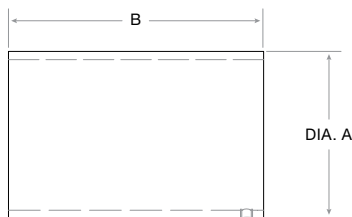
Fixture Series	Diameter (A)	Length (B)
ZX08	1.25"	1.75"
ZX11	1.88"	3.00"
ZX16	2.50"	3.85"
ZX18	2.75"	3.85"
ZX20	3.00"	4.25"
ZX30	4.50"	4.75"
ZX38	5.25"	5.00"
ZXL4.0	4.25"	5.00"
ZXL5.0	5.10"	6.00"

GSS


GSS SIZES

Fixture Series	Diameter (A)	Length (B)
ZX08	1.25"	1.25"
ZX11	1.88"	1.75"
ZX16	2.50"	1.38"
ZX18	2.75"	2.00"
ZX20	3.00"	2.25"
ZX30	4.50"	3.00"
ZX38		
ZXL4.0	4.25"	2.00"
ZXL5.0	5.10"	4.00"

GSL


GSL SIZES

Fixture Series	Diameter (A)	Length (B)
ZX08	1.25"	1.75"
ZX11	1.88"	3.00"
ZX16	2.50"	3.85"
ZX18	2.75"	3.85"
ZX20	3.00"	4.50"
ZX30	4.50"	4.75"
ZX38	5.00"	5.00"
ZXL4.0	4.25"	5.00"
ZXL5.0	5.10"	6.00"

Notes:
