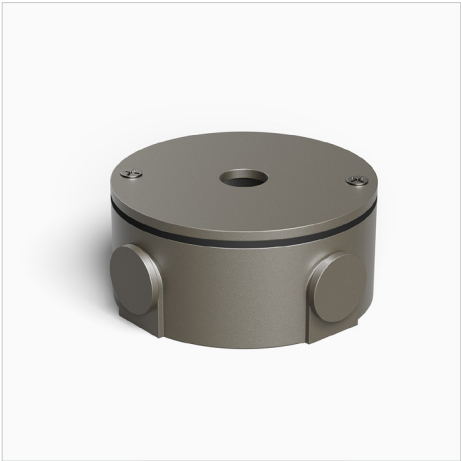


CB4.0

ACCESSORIES | Surface Mount Box

FEATURES

- Weatherproof round surface mount box.
- Allows four conduit entries from the side.
- Powder coat over cast aluminum structure.
- Can accommodate a small power supply unit.



Weatherproof Round Surface Mount Box: CB4.0-BZ

SPECIFICATIONS

Materials

Cast aluminum box with machined aluminum cover plate.

Finish

Polyester powder coat with RoHS compliant procedures.

Mounting

Accepts all 1/2"-14 NPS male fitting.

Side Entries

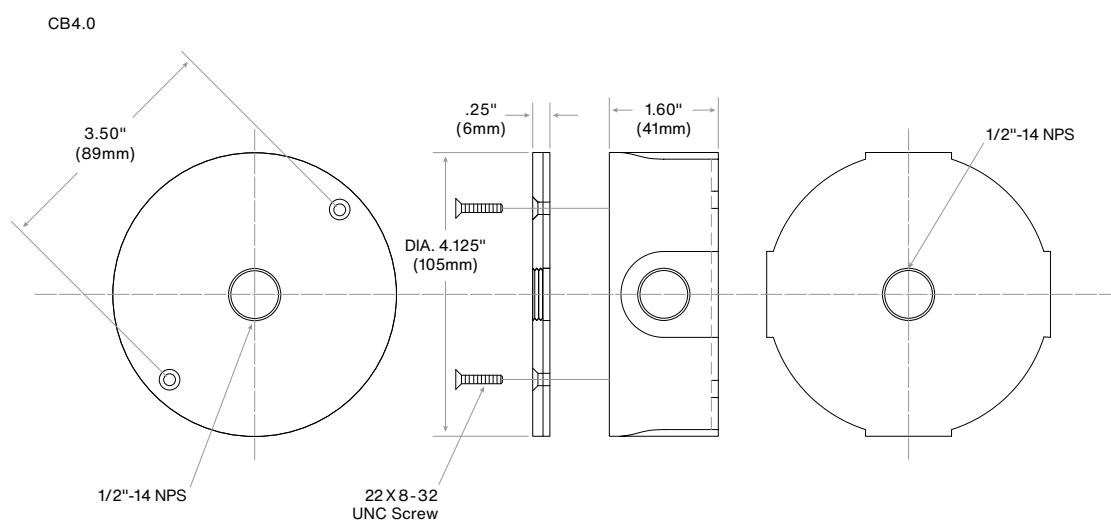
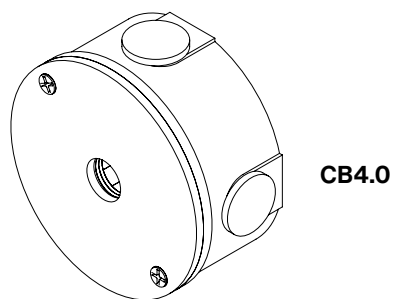
Standard 4 ea of 1/2" knockouts.

ORDERING GUIDE

EXAMPLE: **CB4.0-BZ**

MODEL	FINISH	
CB4.0		
CB4.0 Series Surface Mount Box w/4 Side Entries	BK	Black Powder Coat
	BZ	Bronze Powder Coat
	WT	White Powder Coat
	ABK	Anodized Black
	ACL	Anodized Clear
	CC	Custom Powder Coat
	NBR	Natural Brass
	NSS	Natural Stainless Steel

PRODUCT DRAWINGS



Notes: