

CB5.1/CB5.1-2

ACCESSORIES | Surface Mount Box

FEATURES

- Aesthetic, weatherproof round surface mount box.
- Can mount single fixture or two fixture heads.
- Machined from solid billet 6061-T6 corrosion resistant aluminum.
- Can accommodate a small power supply unit.



5" Weatherproof Round Surface Mount Box: CB5.1-ACL

SPECIFICATIONS

Materials

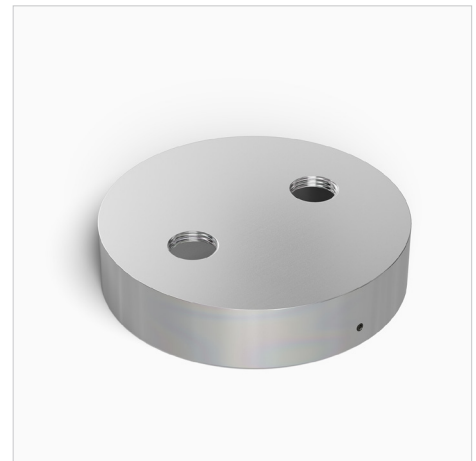
Machined from billet 6061-T6 corrosion resistant aluminum. Available in 304/316 stainless steel or 360 brass upon request.

Finish

Polyester powder coat with RoHS compliant procedures.

Mounting

Accepts all 1/2"-14 NPS male fitting.



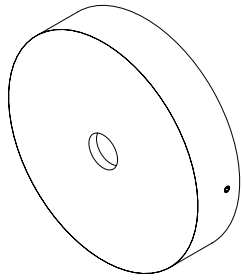
5" Round Double Surface Mount Box: CB5.1-2-NSS

ORDERING GUIDE

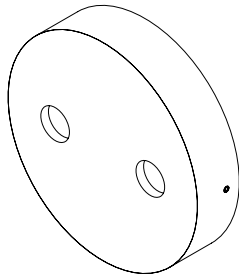
EXAMPLE: **CB5.1-2-ACL**

MODEL/HOLES		MATERIAL		FINISH	
CB5.1	1 Fixture Hole	BLANK	Aluminum (Standard)	STANDARD	
CB5.1-2	2 Fixture Holes	NBR	Natural Brass	BK	Black Powder Coat
		NSS	Natural Stainless Steel	BZ	Bronze Powder Coat
		CU	Natural Copper	WT	White Powder Coat
				PREMIUM	
				ABK	Anodized Black
				ACL	Anodized Clear
				CC	Custom Powder Coat

PRODUCT DRAWINGS

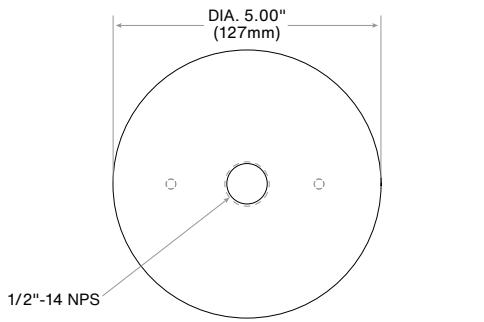


CB5.1

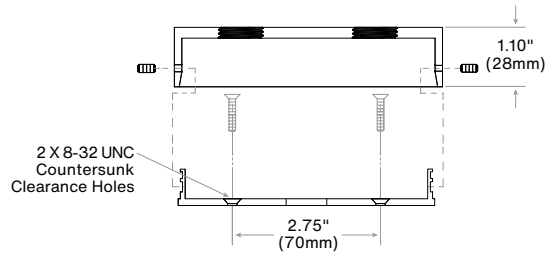
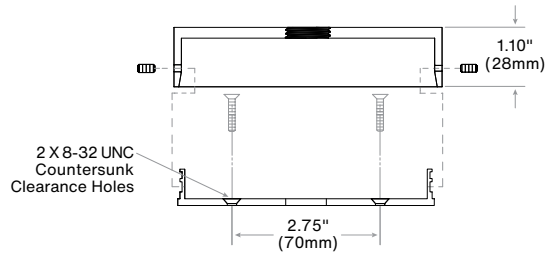
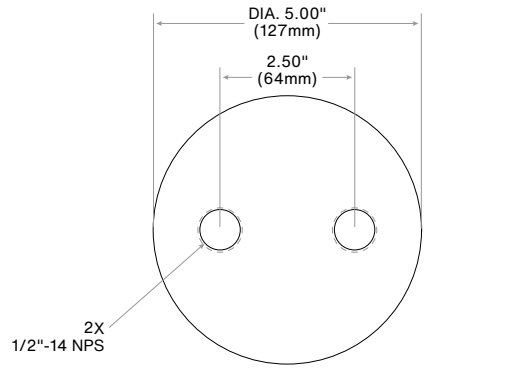


CB5.1-2

CB5.1



CB5.1-2



Notes:

