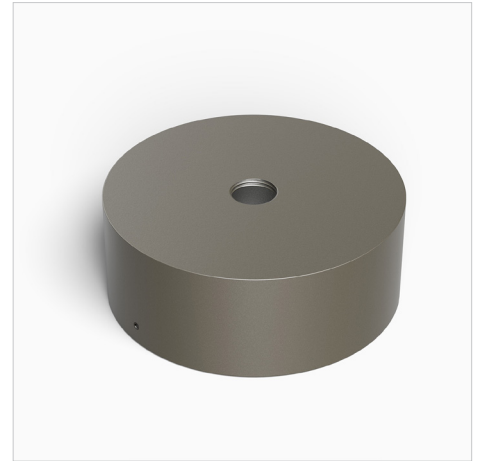


CB5.3

ACCESSORIES | Surface Mount

FEATURES

- Aesthetic, weatherproof round surface mount box.
- Allows up to four conduit entries from the side.
- Machined from solid billet 6061-T6 corrosion resistant aluminum.
- Can accommodate a small power supply unit.
- Can accommodate 1/2" side entries.



5" Weatherproof Round Surface Mount Box: CB5.3-BZ

SPECIFICATIONS

Materials

Machined from billet 6061-T6 corrosion resistant aluminum. Available in 304/316 stainless steel or 360 brass upon request.

Finish

Polyester powder coat with RoHS compliant procedures.

Side Entries

Can accommodate up to 4 ea of 1/2" knockouts.

Mounting

Accepts all 1/2"-14 NPS male fitting.

ORDERING GUIDE

 EXAMPLE: **CB5.3-BZ**

MODEL	MATERIAL	FINISH
CB5.3 CB5.3 Series Surface Mount Round Box	<input type="text"/>	
	BLANK	Aluminum (Standard)
	NBR	Natural Brass
	NSS	Natural Stainless Steel
	CU	Natural Copper
	STANDARD	
	BK	Black Powder Coat
	BZ	Bronze Powder Coat
	WT	White Powder Coat
	PREMIUM	
ABK	Anodized Black	
ACL	Anodized Clear	
CC	Custom Powder Coat	

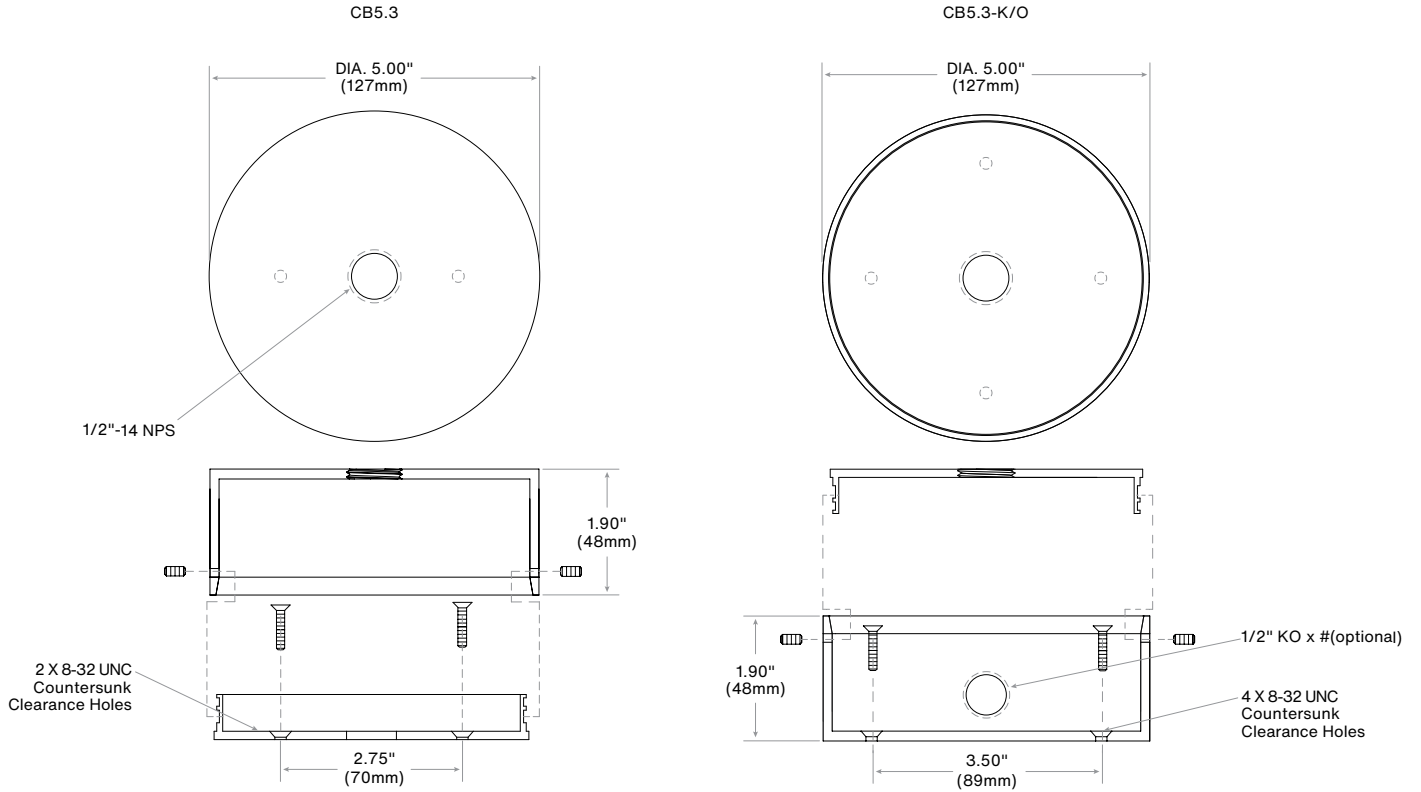
OPTIONAL

1/2" SIDE ENTRIES

<input type="text"/>	
2K	2 x K/O
4k	4 x K/O

PRODUCT DRAWINGS

CB5.3



Notes:

