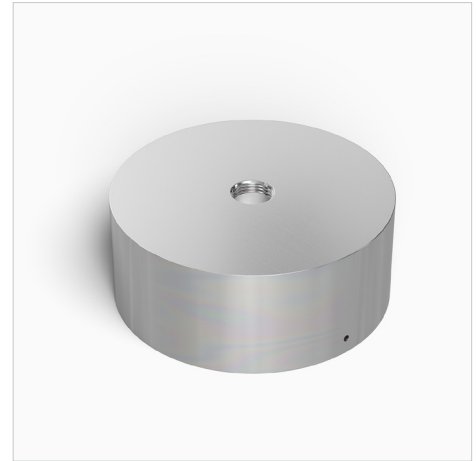


CB5.5/CB5.5-2

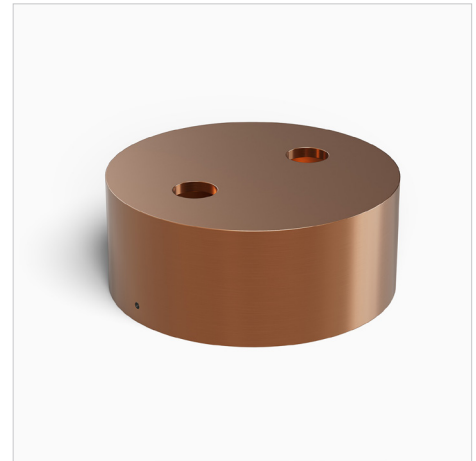
ACCESSORIES | Surface Mount Box

FEATURES

- Aesthetic, weatherproof round surface mount box.
- Can mount single fixture or two fixture heads.
- Allows up to four conduit entries from the side.
- Machined from solid billet 6061-T6 corrosion resistant aluminum.
- Can accommodate a small power supply unit.
- Can accommodate 1/2" side entries.



5" Weatherproof Round Surface Mount Box: CB5.5-NSS



5" Round Double Surface Mount Box: CB5.5-2-CU

SPECIFICATIONS

Materials

Machined from billet 6061-T6 corrosion resistant aluminum. Available in 304/316 stainless steel or 360 brass upon request.

Finish

Polyester powder coat with RoHS compliant procedures.

Mounting

Accepts all 1/2"-14 NPS male fitting.

Side Entries

Can accommodate up to 4 ea of 1/2" knockouts.

ORDERING GUIDE

EXAMPLE: **CB5.5-2-CU-4K**

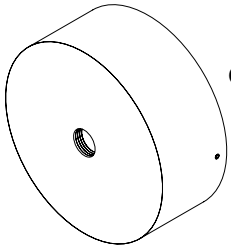
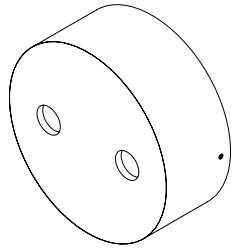
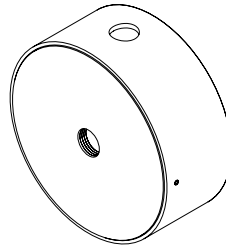
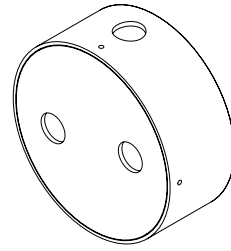
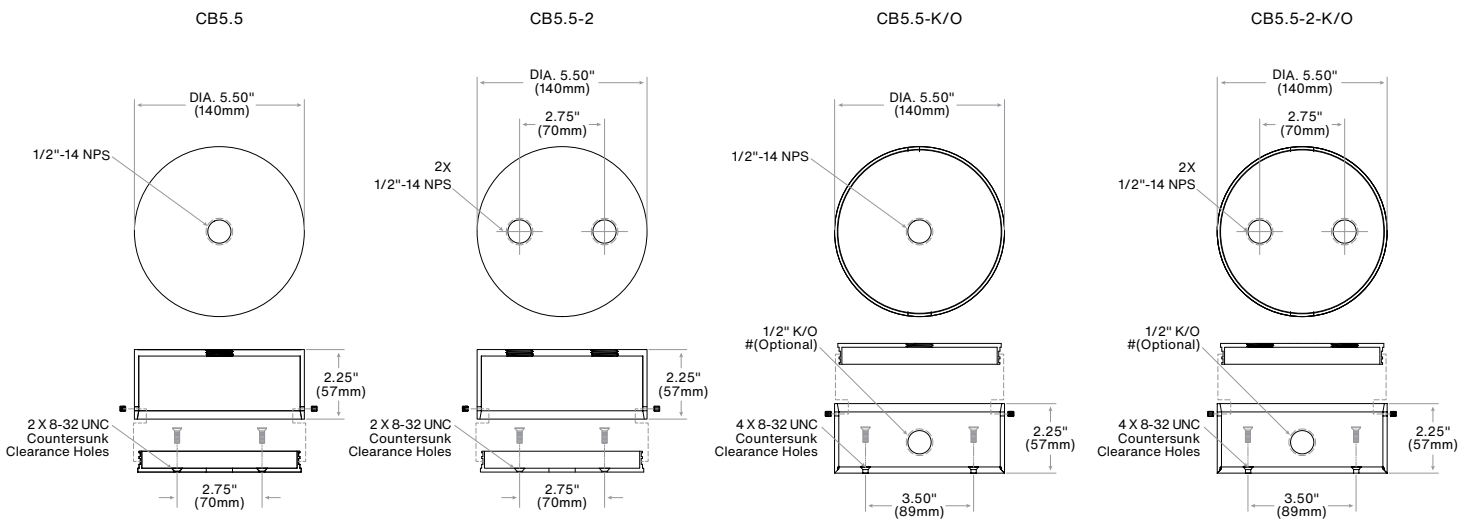
MODEL / HOLE OPTIONS		MATERIAL		FINISH	
CB5.5	1 Fixture Hole	BLANK	Aluminum (Standard)	STANDARD	
CB5.5-2	2 Fixture Holes	NBR	Natural Brass	BK	Black Powder Coat
		NSS	Natural Stainless Steel	BZ	Bronze Powder Coat
		CU	Natural Copper	WT	White Powder Coat
				PREMIUM	
				ABK	Anodized Black
				ACL	Anodized Clear
				CC	Custom Powder Coat

OPTIONAL INSTALLED ACCESSORIES

1/2" SIDE ENTRIES

2K	2 x K/O
4K	4 x K/O

PRODUCT DRAWINGS


CB5.5

CB5.5-2

CB5.5-K/O

CB5.5-2-K/O

Notes:
