

ET

ACCESSORIES | MOUNTING / Extensions

FEATURES

- T-bar aluminum extrusion for twin head mounting.



T-bar for Twin Head Mounting: ET-16-ACL

SPECIFICATIONS

Materials

Machined from billet 6061-T6 corrosion resistant aluminum. Available in 304/316 stainless steel or 360 brass upon request.

Finish

Polyester powder coat with RoHS compliant procedures.

Mounting

Mounts using 1/2"-14 NPS male fitting.

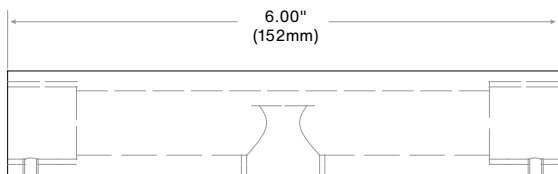
ORDERING GUIDE

EXAMPLE: ET-11-ACL

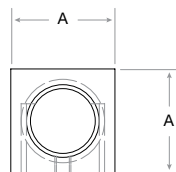
SERIES	MODEL/WIDTH (A)		FINISH	
ET				
Extension Series T-bar Extrusion For Twin Head Mounting	11	.88" (22mm)	BK	Black Powder Coat
	16	1.13" (29mm)	BZ	Bronze Powder Coat
	20	1.25" (32mm)	WT	White Powder Coat
	30	1.50" (38mm)	ABK	Anodized Black
			ACL	Anodized Clear
			CC	Custom Powder Coat
			NBR	Natural Brass
			NSS	Natural Stainless Steel

PRODUCT DRAWINGS

ET



3X
1/2"-14 NPS



Model	Width (A)
11	.88" (22mm)
16	1.13" (29mm)
20	1.25" (32mm)
30	1.50" (38mm)