

Project Name

Fixture Type

EX

ACCESSORIES | MOUNTING / EXTENSIONS

FEATURES

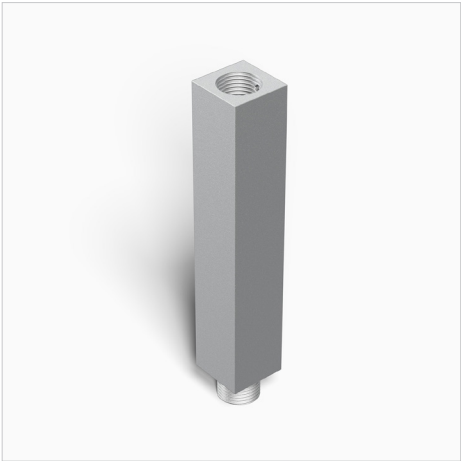
- Extension stem in round or square profile.
- In different lengths and sizes for different sizes of fixture.
- Aluminum extrusion.

SPECIFICATIONS

Materials
Machined from billet 6061-T6 corrosion resistant aluminum. Available in 304/316 stainless steel or 360 brass upon request.

Finish
Polyester powder coat with RoHS compliant procedures.

Mounting
Accepts all 1/2"-14 NPS male fitting.



Square Extension Stem: EX-SQ-16-6-ACL



Round Extension Stem: EX-RD-16-6-ACL

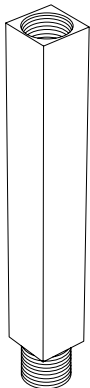
ORDERING GUIDE

EXAMPLE: EX-SQ-16-6-ACL

SERIES	SHAPE		MODEL		LENGTH		FINISH	
EX Extension Series Extension Stem Multi-Length	SQ	Square	11	11 Series	6	6"	BK	Black Powder Coat
	RD	Round	16	16 Series	12	12"	BZ	Bronze Powder Coat
			20	20 Series	XX	Longer lengths in increments of 6"	WT	White Powder Coat
			30	30 Series			ABK	Anodized Black
							ACL	Anodized Clear
							CC	Custom Powder Coat
							NBR	Natural Brass
							NSS	Natural Stainless Steel

Notes:

PRODUCT DRAWINGS

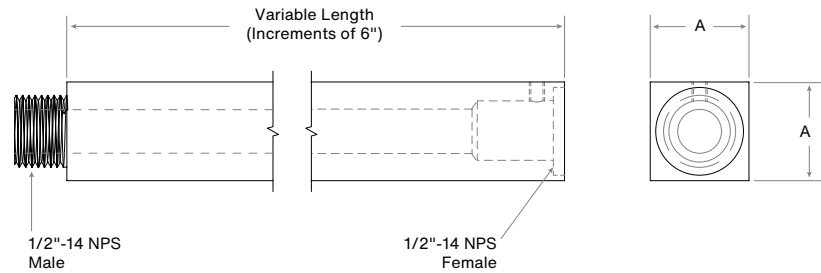


EX-SQ
Square



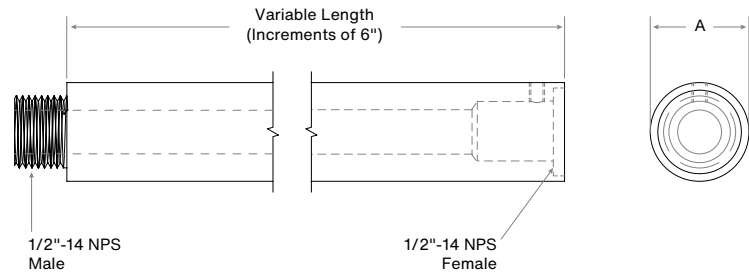
EX-RD
Round

EX-SQ



Model	Width (A)
11	.86" (21.97mm)
16	1.12" (28.57mm)
20	1.25" (31.75mm)
30	1.49" (38.09mm)

EX-RD



Model	Diameter (A)
11	.86" (21.97mm)
16	1.12" (28.57mm)
20	1.25" (31.75mm)
30	1.49" (38.09mm)