

ZPLCM-I

(includes former CMBL-150i and CMBL150i-GFCI models)

PATH & BOLLARD | ZPLCM Series | 3.15"

4 - 8W (100 - 200LM) | 120V | HK LED, Amber



FEATURES

- Rectangular 120V bollard-style commercial path light with directional light pattern and available onboard GFCI power receptacle and the ability to include USBA or USBC charging ports. Stands 18" high.
- 4W, 8W integrated HKLED delivering 200 - 400 lumens.
- Lighting is Wet Location Listed, IP67 standard. Power receptacle is Wet Location Listed, IP67 standard, when access cover is closed and receptacle is not in use.
- Extruded aircraft grade (6061-T6), corrosion-resistant aluminum, then anodized and powder coated to create a highly durable, marine grade finish.
- Every fixture tested end of line for water tightness and light quality.



Commercial Path Light: ZPLCM-IS1-ABL



Commercial Path Light with Power: ZPLCM-IP1-ABL

SPECIFICATIONS

Materials

Extrusion of 6061-T6 corrosion resistant aluminum with 304 stainless steel hardware.

Finish

Aluminum materials are first anodized and then powder coated for a robust, marine grade finish.

Voltage

120V AC with Integral LED driver.

Wattage

4 or 8W HK LED delivering 100 to 200 lumens.

Light Engine

Innovative HK LED light engine. CRI 90 Standard. Available in CRI 80 or CRI 95 upon request. Standard CCT options are 2700K, 3000K, 3500K, 4000K. Amber option available. Consult factory for specialty LED specification details.

Driver/Dimming

Onboard, Integrated LED Driver. Non-dimmable.

Optics

Includes Solite soft focus lens for broad and even light spread.

Optional Power Receptacle

Available with built-in GFCI power receptacle that can be combined with USBA or USBC charging ports. This enables up to 2 power socket plug-ins and 2 USB plug-ins. GFCI cover is Wet Location Listed when cover is closed.

Mounting

Use anchor bolts size 5/16" or 3/8" (by others, not included with fixture).

Listings

ETL Listed for Wet Location, IP67 Standard. RoHS Compliant.

ORDERING GUIDE

 EXAMPLE: **ZPLCM-IS1-ABL-120V04W-27-18-GFI**

MODEL	PHYSICAL OPTIONS		MATERIAL /FINISH		POWER		LIGHT		SIZE		
ZPLCM					120V						
ZPLCM Series Commercial Path Light Integrated HK LED Optional Power Receptacle	IS1	Line Voltage, Single Light	ABL	Aluminum Black	VOLTAGE		LIGHT WATTAGE		CCT		
	IP1	Line Voltage, Single Light with Power	ABR	Aluminum Bronze	120V	120V AC	00W	No Light	27	2700K	
			AWH	Aluminum White			04W	4 Watts (100LM)	30	3000K	
			AAC	Aluminum Anodized Clear ¹			08W	8 Watts (200LM)	35	3500K	
			CCC	Custom Finish ¹			SPW	Specialty ²	40	4000K	
									AM	Amber ²	
									CC	Custom LED	
										18	18"
										CC	Custom

¹ Consult factory for specialty finish quoting and lead times.

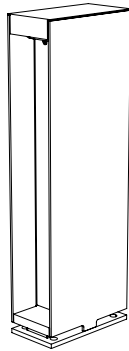
² For Specialty AM (Amber LED), select SPW (Specialty) for Wattage. Consult factory for LED technical details before Specification or Order.

OPTIONAL INSTALLED ACCESSORIES
POWER OPTIONS

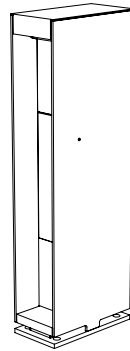
GFI	GFCI
GFA	GFCI w/USBA
GFC	GFCI w/USBC

Notes:

PRODUCT DRAWINGS

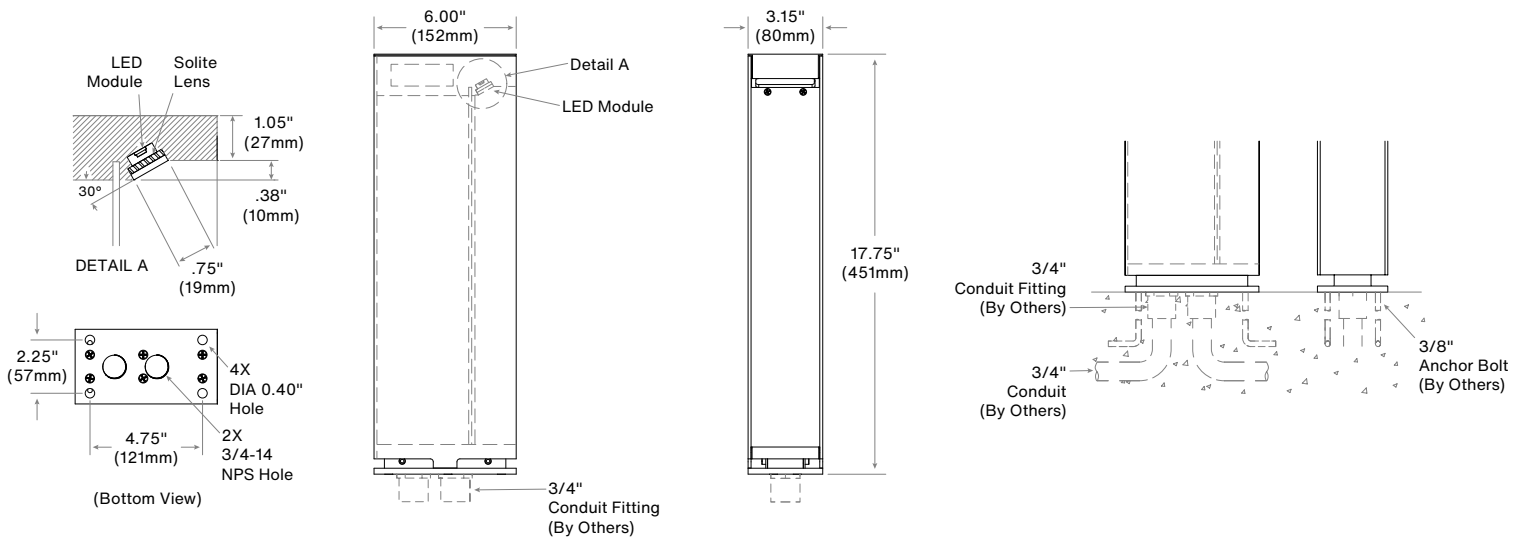


ZPLCM-IS1

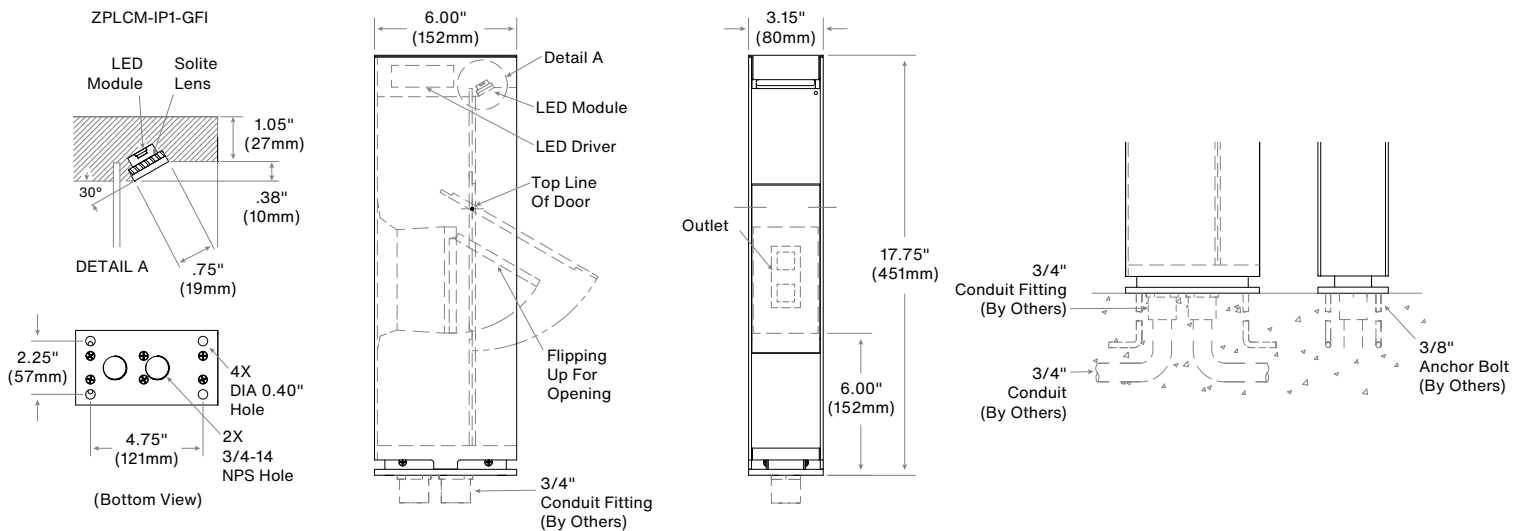


ZPLCM-IP1

ZPLCM-IS1

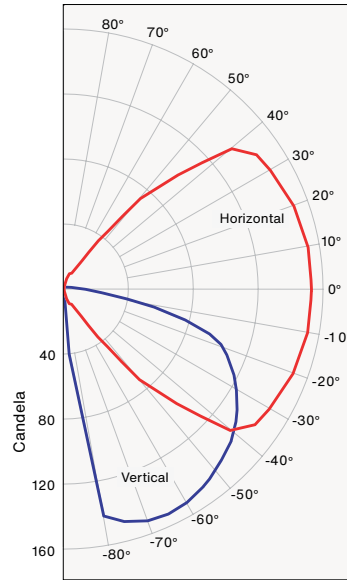
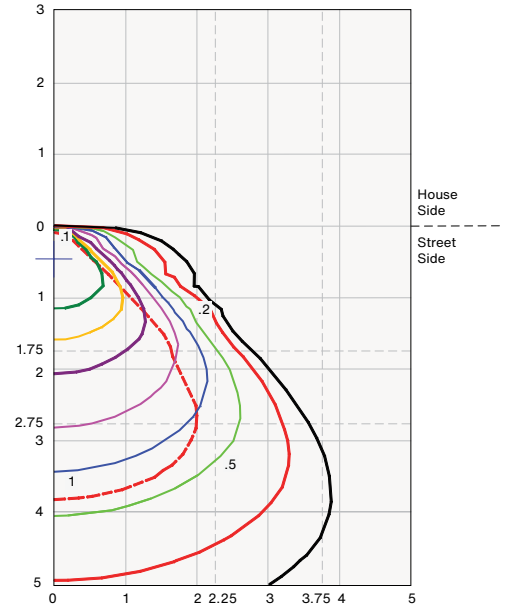


ZPLCM-IP1



PHOTOMETRY & ENERGY DATA
ZPLCM

Input Power	7.77W
Color Temperature (CCT)	2700K
Color Rendering Index (Ra)	85
Maximum Lumen Angle (vertical)	-65°
Maximum Lumen Angle (horizontal)	0°
Max. Candelpower	154cd
Delivered Lumens	178lm
Efficacy	23lm/W

Polar Graph - Intensity

Isocandela Lines of Horizontal Illuminance


Distance in Units of Mounting Height
 Values Based on 1.4 Foot Mounting Height
 1/2 Maximum Candela Trace Shown as Dashed Curve
 (+) = Maximum Candela Point

WATTAGE MULTIPLIER

Wattage	Multiplier
4 Watt	0.50
8 Watt	1.00
AMBER 9 Watt	Consult Factory

CCT MULTIPLIER

Color Temp.	Multiplier
2700k	0.97
3000k	1.00
4000k	1.05
AMBER	Consult Factory