

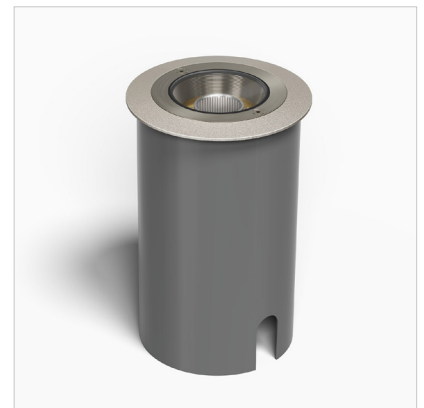
# ZGL16

(includes former ZXG-LED model)

STEP & IN GROUND | ZG16 Series | 8.00" dia.  
5 - 10W ( 500 - 900lm ) | 12V | HK LED, RGB, Amber



Low Voltage Brass In Ground LED Light:  
ZGL16-0R1-NBR



ZGL16-0R1-NSN with Outer Sleeve



ZGL16-0R1-NBO installed profile with Top Cover

## FEATURES

- Robust and versatile low voltage, 12V LED, in ground lighting fixture for use in a range of landscape and architectural outdoor lighting applications.
- 5W, 7W, 10W integrated HK LED delivering 500 - 900 lumens. 2200 - 4000K CCT, including specialty Amber and RGB options.
- Wet Location Listed, IP67 Standard.
- Superior corrosion resistant die-cast and machined natural brass in ground fixture, also available in Silver Nickel and Black Oxide finishes to complement varying project aesthetics.
- 360° horizontal and 20° vertical adjustability.
- PVC Outer Sleeve simplifies in ground installation.
- Optional Grate Cover, Slot Aperture, Top Cover, and Adjustable Shroud Shields available.
- Optional PVC Outer Sleeve simplifies installation.
- Every fixture tested end of line for water tightness and light quality.
- Readymade eligible configurations ship in 2 to 4 weeks, complete with selected accessories installed.

## SPECIFICATIONS

### Materials

Housing: Die-cast brass.  
Top Plate: Machined Solid Natural Brass.  
Lamp holder and Aiming Assembly: Solid billet 6061-T6 corrosion resistant aluminum.  
Hardware: 304 stainless steel.

### Finish

Superior corrosion resistant Natural Brass, Silver Nickel, or Black Oxide for a robust marine grade finish.

### Optional Shields

Grate Cover, Slot Aperture, Top Cover, and Adjustable Shroud Shields available.

### Voltage

12V AC/DC. Requires remote step down transformer.

### Wattage

5, 7 or 10W HK LED delivers 500 to 900 lumens.

### Dimming

MLV or ELV Phase Control dimming.

### Light Engine

Innovative HK LED Light module operates like a lamp and can be easily changed in the field. CRI 90 Standard. Available in CRI 80 or CRI 95 upon request. Standard CCT options are 2700K, 3000K, 3500K, 4000K. Specialty 2200K, 2400K, 2500K, Amber, and RGB options available. Consult factory for specialty LED specification details.

### Optics

Narrow (26°), Medium (38°), and Wide (48°) beam spread options available. Accepts up to 3 optical accessories (hexcel louver, optical lenses, dichroic color filters, etc.) Secured place with metal snap ring.

### Mounting

Mounts directly in ground, or poured concrete. Optional PVC Outer Sleeve is available to aid installation (See page 4 for details).

### Listings

ETL Listed for Wet Location, IP67 Standard.  
RoHS Compliant.

## ORDERING GUIDE

EXAMPLE: **ZGL16-0R1-NBR-012V-05W-30M-SGC-LVR**

MODEL	PHYSICAL OPTIONS	MATERIAL / FINISH	POWER	LIGHT	
<b>ZGL16</b>	<b>0R1</b>		<b>012V</b>		
ZG16 Series 8" In Ground Light Integrated HK LED	TYPE <b>0R1</b> Low Voltage, Round Single Light	<b>NBR</b> Natural Brass <b>NSN</b> Natural Brass Silver Nickel <b>NBO</b> Natural Brass Black Oxide <b>CCC</b> Custom Finish	VOLTAGE <b>012V</b> 12V AC	WATTAGE PER LIGHT <b>05W</b> 5 Watts (500lm) <b>07W</b> 7 Watts (700lm) <b>10W</b> 10 Watts (900lm) <b>SPW</b> Specialty <sup>2</sup>	CCT <b>22</b> 2200K <b>24</b> 2400K <b>25</b> 2500K <b>27</b> 2700K <b>30</b> 3000K <b>35</b> 3500K <b>40</b> 4000K <b>AM</b> Amber <sup>1</sup> <b>RG</b> RGB <sup>1</sup>
					OPTICS <b>N</b> Narrow (26°) <b>M</b> Medium (38°) <b>W</b> Wide (48°) <b>CC</b> Custom Optic

Ready-made eligible configurations ship in 2 to 4 weeks.

<sup>1</sup> Consult factory for specialty finish quoting and lead times.

<sup>2</sup> For Specialty AM (Amber LED) and RG (RGB LED), Select SPW (Specialty) for Wattage. Consult factory for LED technical details before Specification or Order.

## OPTIONAL INSTALLED ACCESSORIES

SHIELD	OPTIC	INSTALLATION
<b>SGC</b> Shield, Grate Cover <b>SSA</b> Shield, Slot Aperture <b>STC</b> Shield, Top Cover <b>SAS</b> Shield, Adjustable Shroud	<b>LVR</b> Hexcel Louver <b>OSL</b> Overall Spread Lens <b>LSL</b> Linear Spread Lens <b>SOL</b> Solite Soft Focus <b>DCF</b> Dichroic Filter	<b>OS</b> Outer Sleeve, PVC

## ADDITIONAL ACCESSORIES

SHIELD ACCESSORIES (Optional)	OPTIC ACCESSORIES (Not Installed at Time of Order)	INSTALLATION ACCESSORIES (Optional)
<b>SGC</b> Shield, Grate Cover <b>SSA</b> Shield, Slot Aperture <b>STC</b> Shield, Top Cover <b>SAS</b> Shield, Adjustable Shroud	<b>LVR-16</b> Hexcel Louver <b>OSL-16</b> Overall Spread Lens <b>LSL-16</b> Linear Spread Lens <b>SOL-16</b> Solite Soft Focus <b>DCF-16</b> Dichroic Filter <b>OPK-16G</b> Optic Kit for ZGL16 - Narrow, Medium, Wide	<b>OS</b> Outer Sleeve

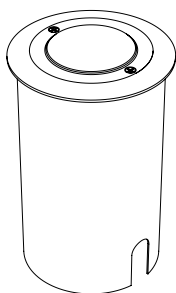
## OUTDOOR MAGNETIC TRANSFORMERS (120V input/12VAC Output)

TRANSFORMERS (Go to [Accessories](#) for detailed specification)

EXAMPLE: **TXS-150-SS**

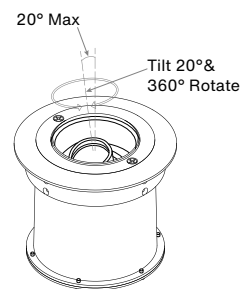
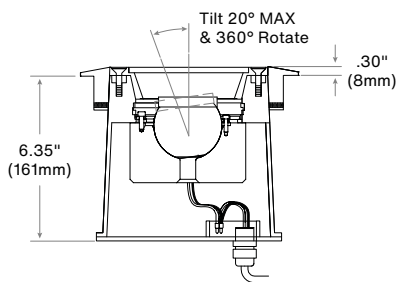
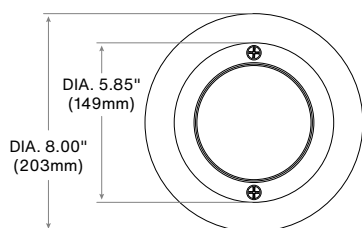
MODEL	WATTAGE (VA)	PRIMARY VOLTAGE (VAC)
<b>TXM</b> Stainless steel, wet location outdoor magnetic transformer Multitap   12VAC Output   MLV Dimming	<b>300</b>	<b>OTR-SS</b> (120V Only)
<b>TXS</b> Stainless steel, wet location outdoor magnetic transformer Multitap   12VAC Output   MLV Dimming	<b>150</b> <b>300</b> <b>600</b>	<b>SS</b> (120V Only)
<b>TXM</b> Compact, damp location magnetic transformer 12VAC Output   MLV Dimming	<b>20</b> <b>40</b> <b>60</b> <b>100</b> <b>150</b> <b>300</b>	<b>120</b> <b>277</b>
<b>IGT</b> In ground outdoor magnetic transformer 12VAC Output   MLV Dimming	<b>50</b> (120V Only) <b>100</b> <b>300</b> <b>600</b>	<b>120</b> <b>277</b>
<b>TXE</b> In-fixture or near mounted electronic transformer 12VAC Output   ELV Dimming   Enclosure by others	<b>60</b>	<b>120</b> <b>277</b>

## PRODUCT DRAWINGS



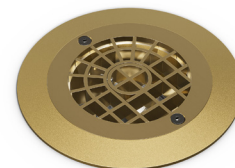
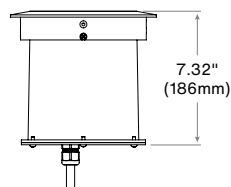
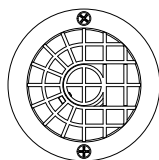
**ZGL16**  
with Outer Sleeve

ZGL16-0R1



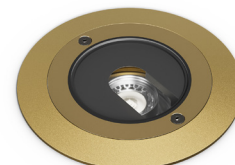
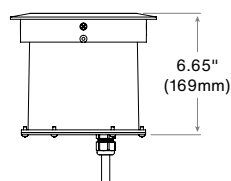
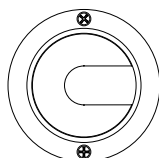
ZGL16  
ACCESSORIES

SGC



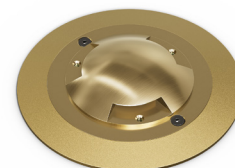
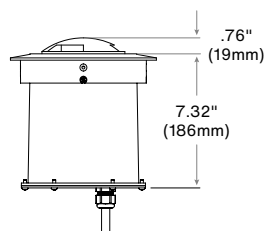
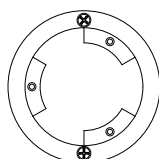
Grate Cover Shield

SSA



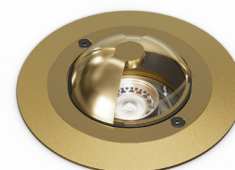
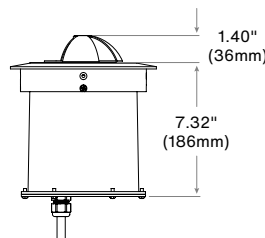
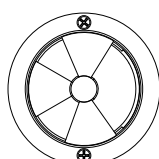
Slot Aperture Shield

STC



Top Cover Shield

SAS

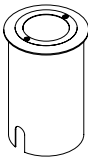


Adjustable Shroud Shield

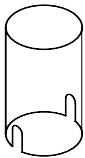
## OPTIONS & ACCESSORIES

### INSTALLATION ACCESSORIES

Outer Sleeve:



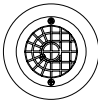
Fixture With OS



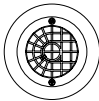
OS

### SHIELD ACCESSORIES

Grate Cover:

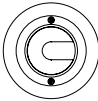


Fixture With SGC

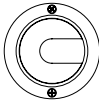


SGC

Slot Aperture:

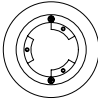


Fixture With SSA

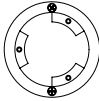


SSA

Drive Over:

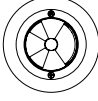


Fixture With STC

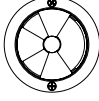


STC


Adjustable Shroud:



Fixture With SAS



SAS

 Readymade eligible configurations ship in 2 to 4 weeks.

Notes: