

# ZHL11 Perforated

(includes former ZXL11-HP model)

HANGING & CATENARY | ZH11 Series | DIA 1.75"  
5 - 7W | 12V | HK LED, Amber, RGB



Perforated Hanging Pendant LED Light: ZHL11-0R1SP1 in Bronze

## FEATURES

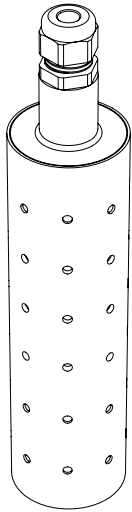
- Elegant and versatile compact hanging light with perforated metal hood, perfect for architectural outdoor and landscape lighting environments.
- 5W, 7W integrated HK LED. 2200-4000K CCT, including specialty Amber and RGB options.
- Wet Location Listed, IP65 Standard.
- Machined from solid aircraft grade (6061-T6), corrosion resistant aluminum, then anodized and powder coated to create a highly durable, marine grade finish. Also available in solid brass or stainless steel.
- Perforated hood with symmetric dot pattern creates subtle lighting around the fixture in addition to the down light.
- Modular components, field changeable LED.
- Hanging light ships standard with 60" power cable or can be ordered in any custom length. Power cord can easily affix to tree branches or beams or installed with coordinating canopy plate.
- Every fixture tested end of line for water tightness and light quality.

## SPECIFICATIONS

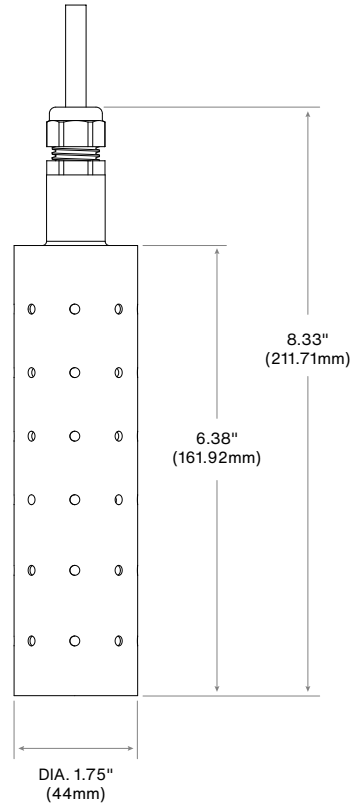
<b>Materials</b> Machined from billet 6061-T6 corrosion resistant aluminum with 304 stainless steel hardware. Available in 304/316 stainless steel or 360 brass upon request.	<b>Voltage</b> 12V AC/DC. Requires remote step down transformer.	<b>Optics</b> Accepts optical accessories (dichroic color filters). Secured in place with metal snap ring.
<b>Finish</b> Aluminum materials are first anodized and then powder coated for a robust, marine grade finish. Stainless steel and brass models are provided with brushed surface.	<b>Wattage</b> 5 or 7W HK LED.	<b>Mounting</b> Mounts to tree branches or wood beams using screw-mount cable ties or select coordinating canopy plate surface/box for pendant application. Standard fixture ships with 60" 18/2 SJTW power cable. Custom hanging lengths also available.
<b>Fixture Weight</b> 1 lb	<b>Light Engine</b> Innovative HK LED Light module operates like a lamp and can be easily changed in the field. CRI 90 Standard. Available in CRI 80 or CRI 95 upon request. Standard CCT options are 2700K, 3000K, 3500K, 4000K. Specialty 2200K, 2400K, 2500K, Amber, and RGB options available. Consult factory for specialty LED specification details.	
	<b>Dimming</b> MLV or ELV Phase Control dimming.	



## PRODUCT DRAWINGS



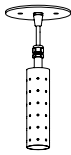
**ZHL11-OR1SP1**  
Perforated



## OPTIONS & ACCESSORIES

### MOUNTING ACCESSORIES

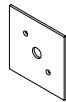
#### Canopy Mount:



Fixture On CM5



CM1



CM3



CM5

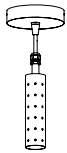


CM5-2



CM2

#### Surface Mount Box:



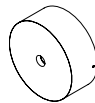
Fixture On CB5.1



CMLJ



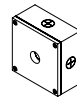
CB4.0



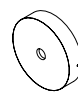
CB5.5



CB3.5

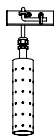


CB4.0-SQ

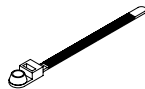


CB5.1

#### Screw-Mount Cable Ties:



Fixture Using CBT-08-BLK



CBT-08-BLK