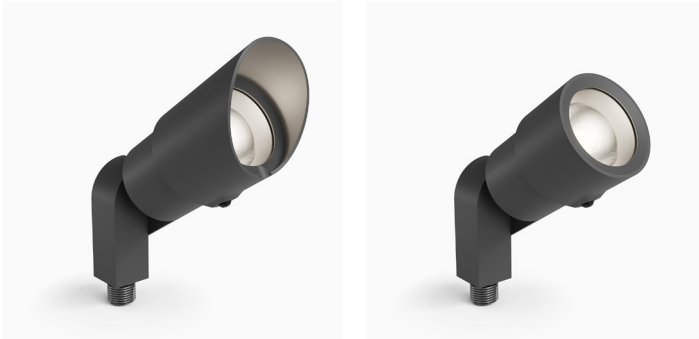


# ZXA16

## INSTALLATION, MAINTENANCE & SERVICE

ACCENT & LANDSCAPE | ZX16 Adapt Series  
5 - 10W (500 - 950lm) | 12V | HK LED



### Materials

6061-T6 Machined aluminum  
304 stainless steel hardware

### Fitting

1/2"-14 NPS male thread

### Dimming

MLV / ELV

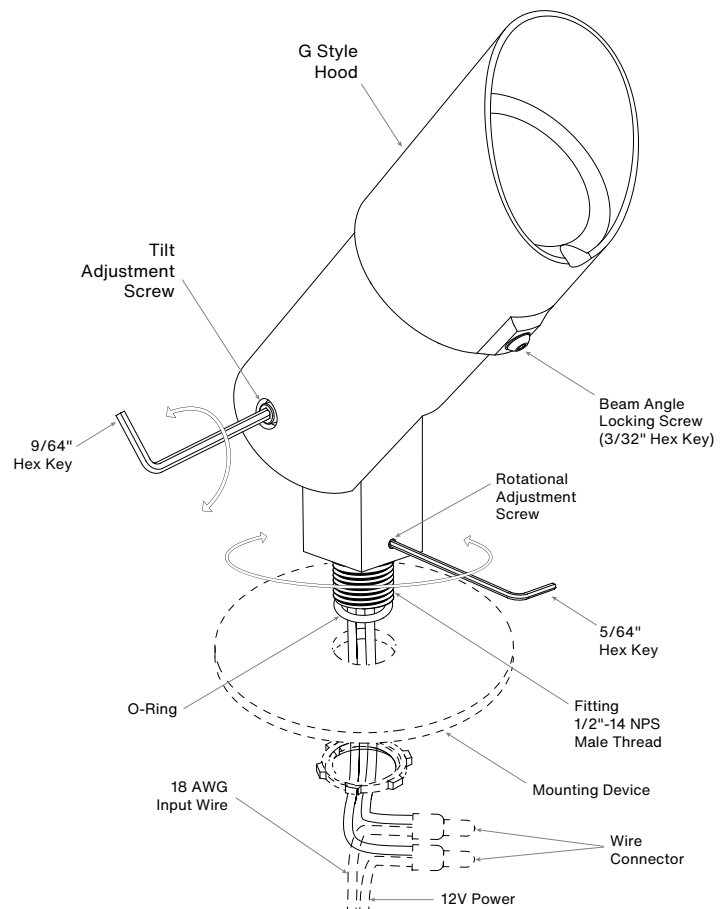
## Installation and Adjustment



### TURN OFF POWER BEFORE AND DURING WIRING TO POWER SUPPLY

*Installation/Service must be done by a qualified electrician, and compliant with NEC and Local Codes.*

- 1 Secure the fixture fitting to the 1/2"-14 NPS female thread on mounting device (plate, box, spike, etc.).
- 2 Connect 18 AWG solid input wires to the 12V power source using appropriate wire connectors.
- 3 Secure the mounting device with the fixture to mounting surface. For HK original mounting accessory, see the individual instruction for further detail of the installation.
- 4 To adjust tilting position of fixture, loosen tilt adjustment screw with 9/64" hex key, aim the fixture body and tighten the screw to secure the fixture in place. Do not tighten more than necessary.
- 5 To adjust rotating position of the fixture, loosen rotation adjustment screw with 5/64" hex key, aim the fixture stem and tighten the screw to secure the fixture in place. Do not tighten more than necessary.



Beam Angle Adjustment

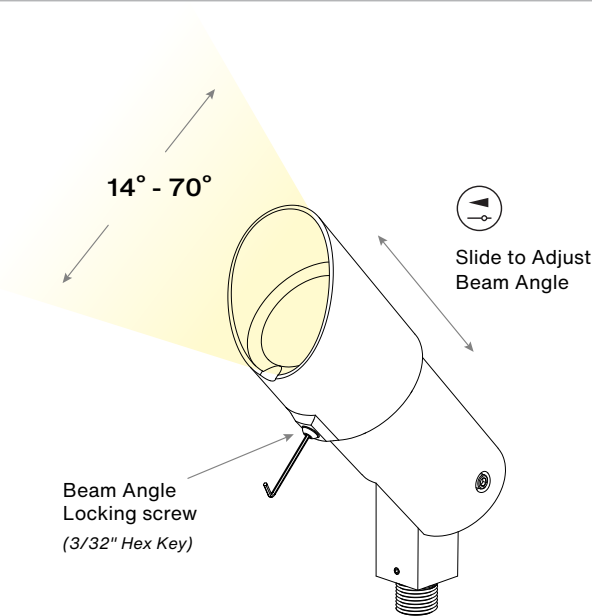
- 1

Use a 3/32" hex key to loosen the locking screw.
- 2

Slide the hood forward for the smallest beam or backward for the largest.
- 3

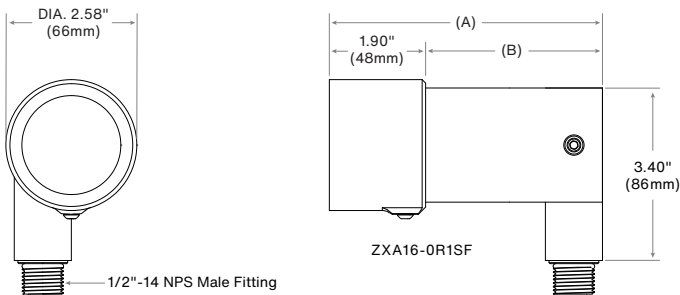
Secure the locking screw to ensure watertightness.

**For Specified Preset Beam Angles**  
Use a ruler to match the desired beam angle with the corresponding measurements in tables below.



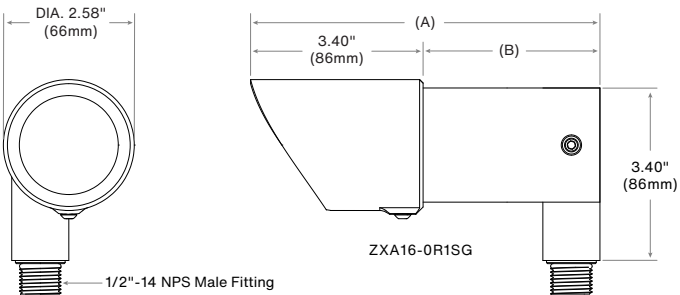
Preset Beam Angle Adjustment

F HOOD



| Beam Angle (FWHM) | Dimension (A)    | Dimension (B)   |
|-------------------|------------------|-----------------|
| 70                | 5 3/8" / 136mm   | 3 1/2" / 89mm   |
| 50                | 5 9/16" / 142mm  | 3 11/16" / 94mm |
| 35                | 5 13/16" / 147mm | 3 7/8" / 99mm   |
| 25                | 6" / 152mm       | 4 1/16" / 104mm |
| 14                | 6 7/16" / 164mm  | 4 9/16" / 115mm |

G HOOD



| Beam Angle (FWHM) | Dimension (A)   | Dimension (B)   |
|-------------------|-----------------|-----------------|
| 70                | 6 7/8" / 175mm  | 3 1/2" / 89mm   |
| 50                | 7 1/16" / 180mm | 3 11/16" / 94mm |
| 35                | 7 5/16" / 185mm | 3 7/8" / 99mm   |
| 25                | 7 1/2" / 190mm  | 4 1/16" / 104mm |
| 14                | 8" / 201mm      | 4 9/16" / 115mm |

## Lamp and Reflector Replacement



**TURN OFF POWER AND KEEP FIXTURE COOL DURING MAINTENANCE SERVICE**

- 1** Loosen the beam angle locking screw and slide the hood forward to expose fixture body.
- 2** Rotate the fixture body counter-clockwise to access the LED module.
- 3** Rotate the LED module assembly counter-clockwise to remove it from the body.
- 4** Replace LED module screwing clockwise.
- 5** Reconnect fixture body screwing clockwise.
- 6** Slide the hood back to reset your beam angle visually or using the table provided.
- 7** Secure the beam angle locking screw to fix in place and ensure watertightness.

