

CGSA/CGSL/CGSS

ACCESSORIES | GLARE SHIELD

FEATURES

- Glare shield for additional glare reduction.
- Unique design allows tool-less adjustment on site.
- Three different styles: 45° angle, long cylinder, and short cylinder.
- For use with C style hood.
- Machined from solid aircraft grade (6061-T6), corrosion-resistant aluminum, then anodized and powder coated to create a highly durable, marine grade finish.
- Readymade eligible configurations ship in 2 to 4 weeks.

SPECIFICATIONS

Materials

Solid billet 6061-T6 corrosion-resistant aluminum. Available in 304/316 stainless steel or 360 brass upon request.

Finish

Aluminum materials are first anodized and then powder coated for a robust, marine-grade finish. Stainless steel and brass models are provided with brushed surface.

ORDERING GUIDE

EXAMPLE: **CGSA-16-ABL**

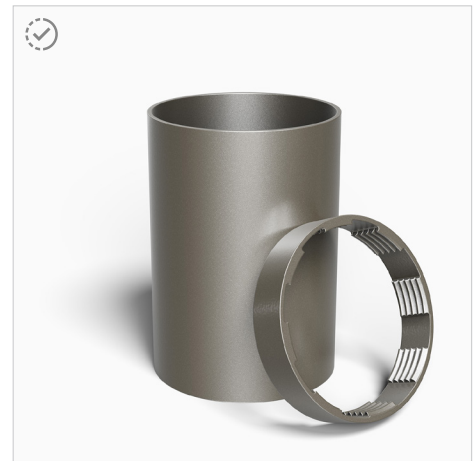
| MODEL | STYLE | SIZE | MATERIAL / FINISH |
|---|-----------------|-----------------------|---|
| CGS Glare Shield For C Hood Angle, Long, and Short | A Angled | 08 ZX08 Series | ABL Aluminum Black |
| | L Long | 11 ZX11 Series | ABR Aluminum Bronze |
| | S Short | 16 ZX16 Series | AWH Aluminum White |
| | | 20 ZX20 Series | AAC Aluminum Anodized Clear ¹ |
| | | 18 ZX18 Series | NBR Natural Brass ¹ |
| | | 30 ZX30 Series | NCU Natural Copper ¹ |
| | | 38 ZX38 Series | NSS Natural Stainless Steel ¹ |
| | | | CCC Custom Finish ¹ |

Readymade eligible configurations ship in 2 to 4 weeks

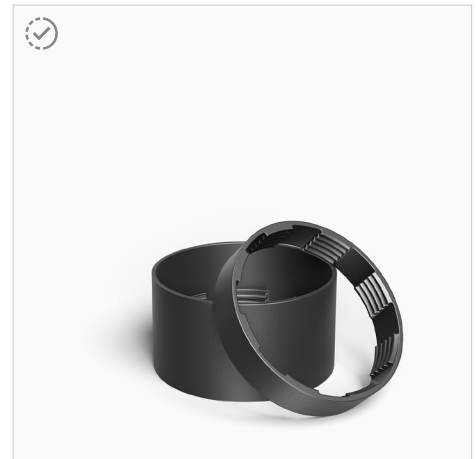
¹ Consult factory for specialty finish quoting and lead times.



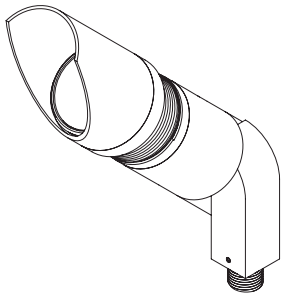
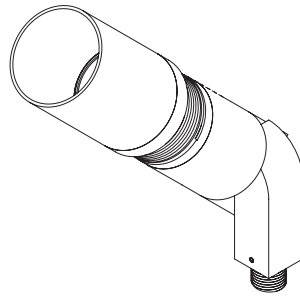
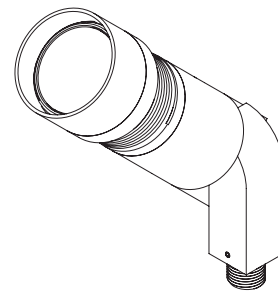
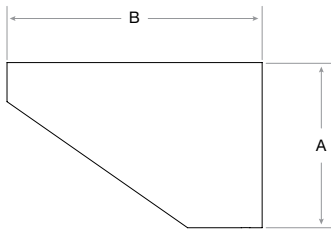
C Hood Angled Glare Shield: CGSA-16-ABL



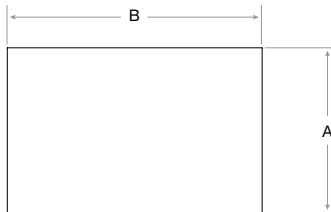
C Hood Long Glare Shield: CGSL-16-ABL



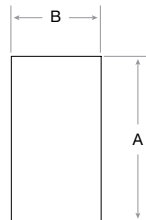
C Hood Short Glare Shield: CGSS-16-ABL

PRODUCT DRAWINGS

CGSA

CGSL

CGSS
CGSA

CGSA SIZES

| Fixture Series | Diameter (A) | Length (B) |
|----------------|--------------|------------|
| ZX08 | 1.25" | 1.75" |
| ZX11 | 1.88" | 3.00" |
| ZX16 | 2.50" | 3.85" |
| ZX18 | 2.75" | 3.85" |
| ZX20 | 3.00" | 4.25" |
| ZX30 | 4.50" | 4.75" |
| ZX38 | 5.00" | 5.00" |

CGSL

CGSL SIZES

| Fixture Series | Diameter (A) | Length (B) |
|----------------|--------------|------------|
| ZX08 | 1.25" | 1.75" |
| ZX11 | 1.88" | 3.00" |
| ZX16 | 2.50" | 3.85" |
| ZX18 | 2.75" | 3.85" |
| ZX20 | 3.00" | 4.50" |
| ZX30 | 4.50" | 4.75" |
| ZX38 | 5.00" | 5.00" |

CGSS

CGSS SIZES

| Fixture Series | Diameter (A) | Length (B) |
|----------------|--------------|------------|
| ZX08 | 1.25" | 1.25" |
| ZX11 | 1.88" | 1.75" |
| ZX16 | 2.50" | 1.38" |
| ZX18 | 2.75" | 2.00" |
| ZX20 | 3.00" | 2.25" |
| ZX30 | 4.50" | 4.00" |

 Readymade (ABL, ABR) eligible configurations ship in 2 to 4 weeks

Notes:
